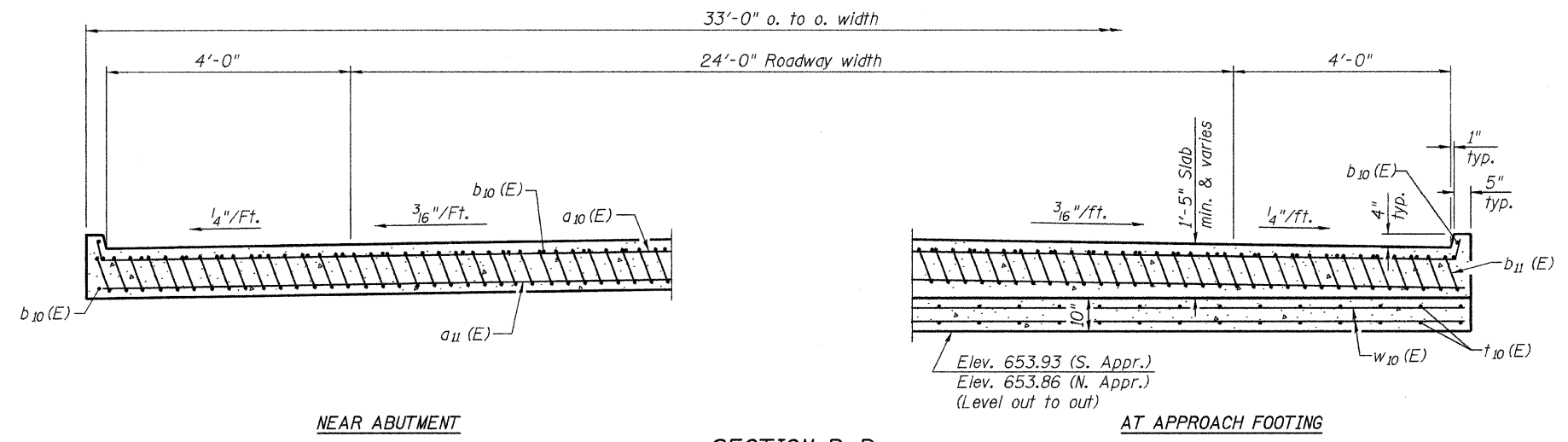


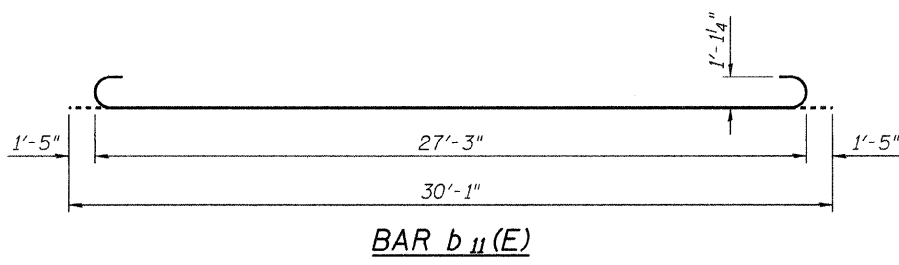
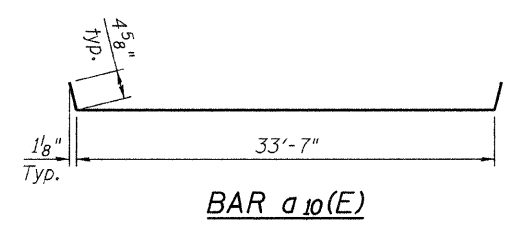
Notes:
 For v(E) bar details, see sheet 8 of 22.
 The approach footing maximum applied service bearing pressure (Q_{max}) = 2.0 ksf.
 For bar splicer details, see sheet 16 of 22.
 For Porous Granular Embankment (Special) and drainage treatment details, see sheet 2 of 22.
 Approach slab concrete shall be Class BS.
 Approach footing concrete shall be Class SI.
 The cost of concrete and reinforcement in approach slab and footing are included with Bridge Approach Pavement.
 The cost of Excavation for approach footing is included with Bridge Approach Pavement.



* Tilt #10 b₁₁(E) bars as required to maintain clearance.
 ** Cost included with Bridge Approach Pavement.

**BAR LIST
 ONE APPROACH PAVEMENT**

Bar	No.	Size	Length	Shape
a ₁₀ (E)	31	#4	34'-4"	—
a ₁₁ (E)	57	#5	33'-9"	—
b ₁₀ (E)	37	#4	29'-8"	—
b ₁₁ (E)	79	#10	30'-1"	—
t ₁₀ (E)	68	#4	10'-0"	—
w ₁₀ (E)	40	#5	33'-9"	—



**TWO APPROACHES
 BILL OF MATERIAL**

Item	Unit	Total
Bridge Approach Pavement	Sq Yd	220

(Sheet 2 of 2)
BRIDGE APPROACH PAVEMENT DETAILS

SHEET NO. 19 22 SHEETS	RTE.	SECTION	COUNTY	TOTAL SHEETS	SHEET NO.
	CH 25	09-00658-00-BR	LASALLE	39	26
	SN 050-3598		CONTRACT NO. 87451		
FED. ROAD DIST. NO. 7 ILLINOIS			FED. AID PROJECT BRS-0271(103)		