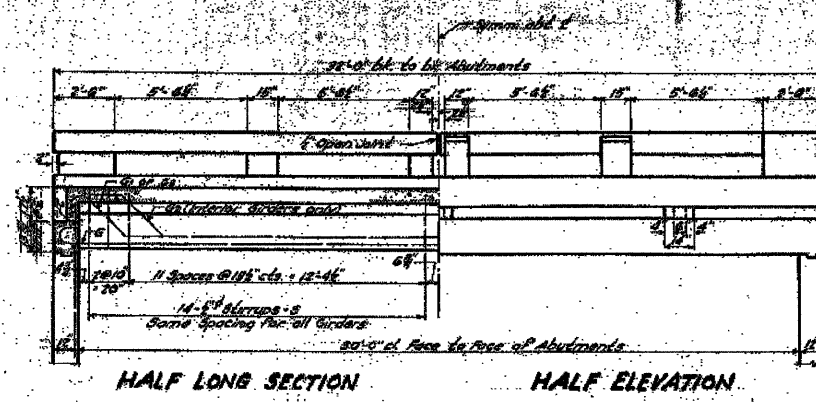


D.N.E. corner of East Concrete Headwall El. 88.58
Existing structure steel I-beams, span 20' Rely 15' Conc. Abut.
to be removed by Bridge Contractor prior to new construction.

STATE OF ILLINOIS
DEPARTMENT OF PUBLIC WORKS & BUILDINGS
DIVISION OF HIGHWAYS

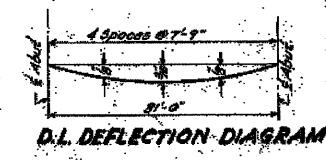
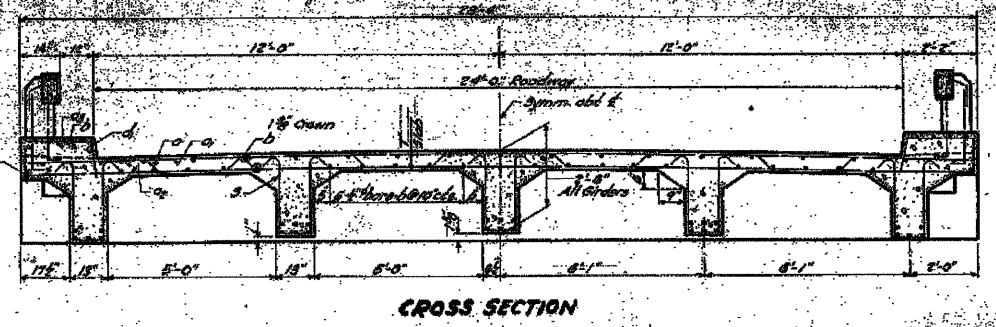
NO. THIS SHEET	TOTAL SHEETS	DATE	BY	PROJECT NO.	SHEET NO.
2	39				7



FOR FINISH DETAILS SEE
S.D. 2072-R, FIG. 3-2

STATION 85+44
BUILT IN 1951
CASALLE COUNTY
SECTION 09-00658
LOADING 120

LETTERING AND NAME #
S.D. 2072-R



GENERAL NOTES

Class I concrete shall be used thru out except in Handrail & Rail Road.

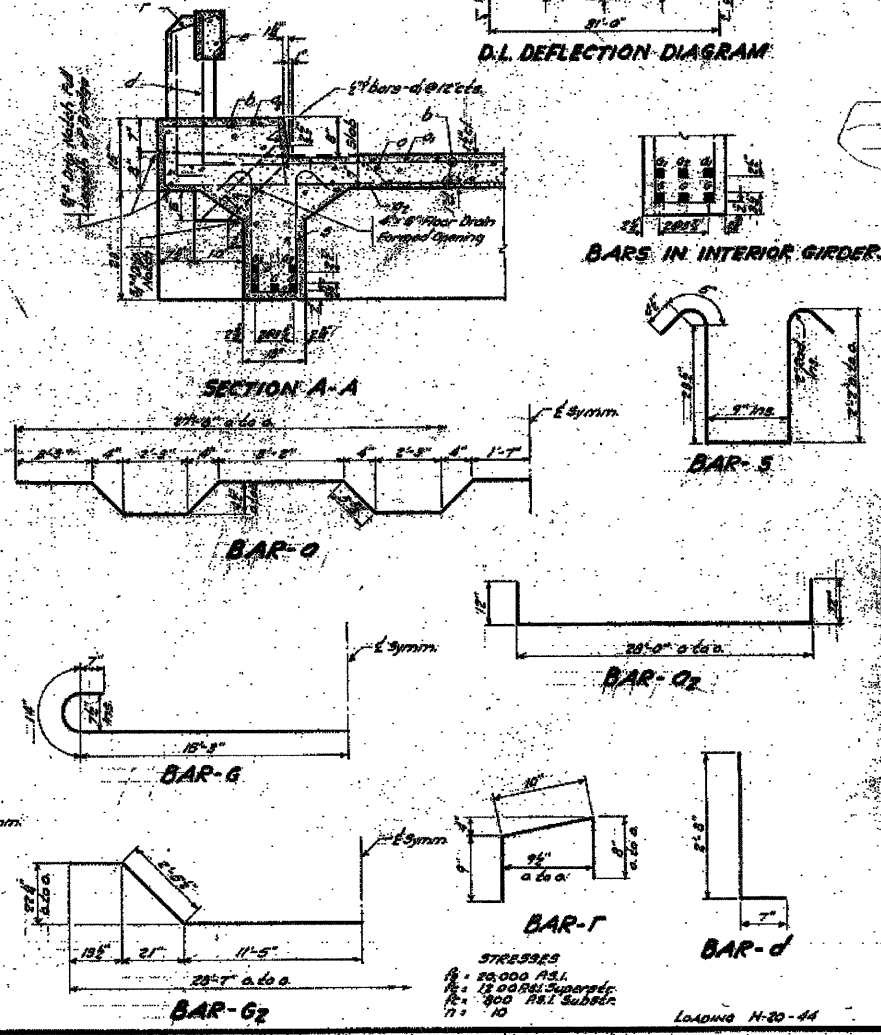
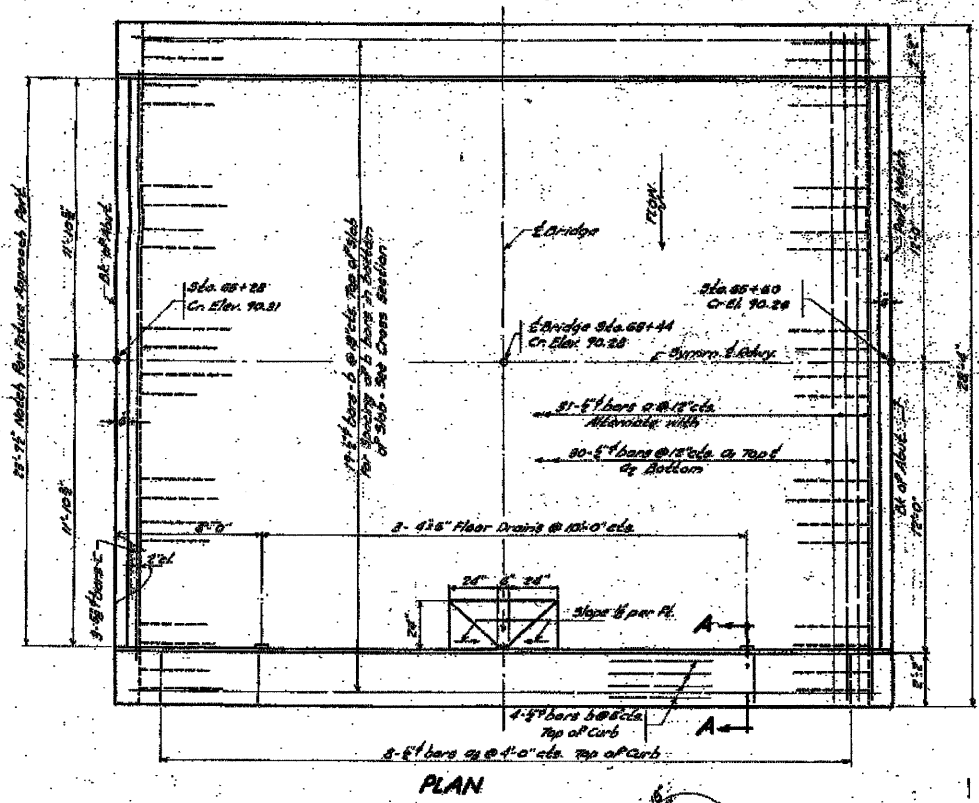
Handrail concrete shall be used in Handrail & Road.

The concrete floor slab shall be finished in accordance with Art. 1010 of the Standard Specifications.

The concrete girders and floor slab shall be poured complete in any continuous operation.

The handrail shall not be poured until after the formwork has been removed.

For re-inforcing steel bars and wire mesh see Special Provisions.



BILL OF MATERIAL SUPERSTRUCTURE

ITEM	NO.	SIZE	LENGTH	WEIGHT	
G1	24	1 1/2"	20'-0"	1120	
G2	30	1 1/2"	20'-0"	1320	
G3	30	1 1/2"	20'-0"	1320	
G4	16	1 1/2"	20'-0"	672	
B	99	2 1/2"	30'-0"	1584	
C	6	1 1/2"	20'-0"	336	
D	24	1 1/2"	20'-0"	1248	
E	24	1 1/2"	20'-0"	1248	
F	16	1 1/2"	20'-0"	840	
G	6	1 1/2"	20'-0"	336	
H	2	1 1/2"	20'-0"	112	
I	4	1 1/2"	20'-0"	224	
J	24	1 1/2"	20'-0"	1248	
K	120	1 1/2"	20'-0"	6160	
Class I Concrete				2,106	
Handrail Concrete				Curbs	18
Reinforcement Bars				Lbs.	8870

TOTAL BILL OF MATERIAL

ITEM	SUPER	SUB	TOTAL
Class I Conc.	Curbs	18	18
Handrail Conc.	Curbs	18	18
Reinforcement Bars	Lbs.	8870	8870
Open Timber Piles (20) Lx 12		180	180
Open Timber Piles (15) Lx 12		240	240
Flag Pole	Each	One	One
Name Plate	Each	One	One
Removal Exc. Struct.	Each	One	One

COMPUTED: *H.E. Surman, Jr.*
CHECKED: *H.E. Surman, Jr.*
DRAWN: *H.E. Surman, Jr.*
CHECKED: *H.E. Surman, Jr.*
ASSEMBLED: *H.E. Surman, Jr.*
CHECKED: *H.E. Surman, Jr.*

EXAMINED: *W. W. Probst*
PASSED: *H.E. Surman, Jr.*
APPROVED: *W. W. Probst*

9-11-1947

Revised 7-3-51 P.R.R.

BRIDGE OVER BRANCH OF NETTLE CREEK
S.A. RT. 4A, SEC. 68-D-MET.
LA SALLE COUNTY
STA. 85+44

EXISTING STRUCTURE PLANS

SHEET NO. 1 2 SHEETS	RTE.	SECTION	COUNTY	TOTAL SHEETS	SHEET NO.
	CH 25	09-00658-00-BR	LASALLE	39	30
SN 050-3598			CONTRACT NO. 87451		
FED. ROAD DIST. NO. 7 ILLINOIS		FED. AID PROJECT BRS-0271(103)			