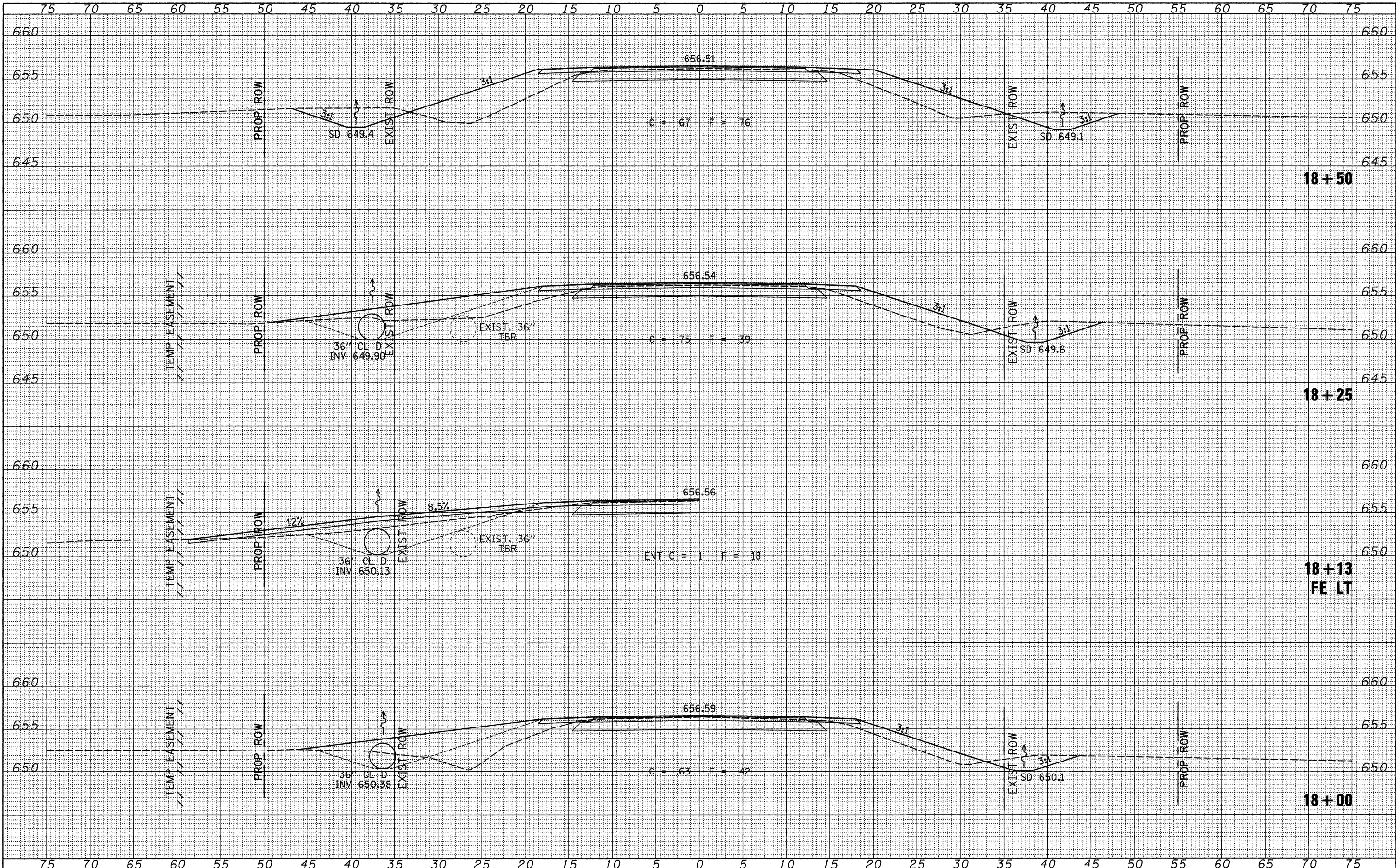


FINAL SURVEY	SURVEYED	DATE
NOTE BOOK	PLOTTED	
NO.	TEMPLATE	
	AREAS CHECKED	

ORIGINAL SURVEY	SURVEYED	DATE
NOTE BOOK	PLOTTED	
NO.	TEMPLATE	
	AREAS CHECKED	



FILE NAME =  
 V:\Bridges\2655-LoSalle\2655xshfts.dgn

USER NAME = othomas  
 DESIGNED -  
 DRAWN -  
 CHECKED -  
 PLOT DATE = 3/17/2010

REVISIED -  
 REVISIED -  
 REVISIED -  
 REVISIED -

**LASALLE COUNTY  
 COUNTY HIGHWAY 25 OVER  
 BRANCH OF NETTLE CREEK**

**CROSS SECTIONS**  
 SCALE: 1" = 5'-0" SHEET NO. 2 OF 8 SHEETS STA. 18+00.00 TO STA. 18+50.00

F.A.S. RTE.	SECTION	COUNTY	TOTAL SHEETS	SHEET NO.
271	09-00658-00-8R	LASALLE	39	33
CONTRACT NO. 87451				
FED. ROAD DIST. NO. 7 ILLINOIS FED. AID PROJECT BR5-0271(103)				