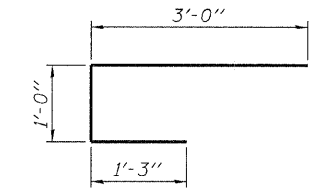


BAR s(E)



BAR a1(E)

DIAPHRAGM AT ABUTMENTS

South Abut. (Looking South)
North Abut. (Looking North)
F.F. - Front Face
B.F. - Back Face

MIN. BAR LAPS

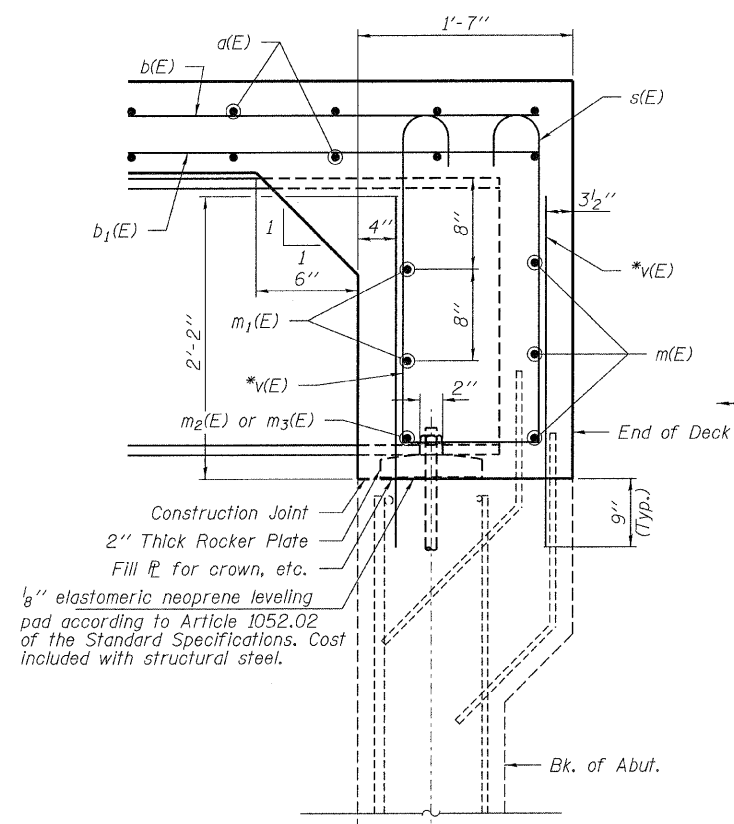
#6 bars = 2'-9"

* Epoxy grout v(E) bars into drilled 7/8" x 9" deep holes. The epoxy grout and method of application shall be in accordance with Sec. 584 of the Standard Specifications

BILL OF MATERIAL

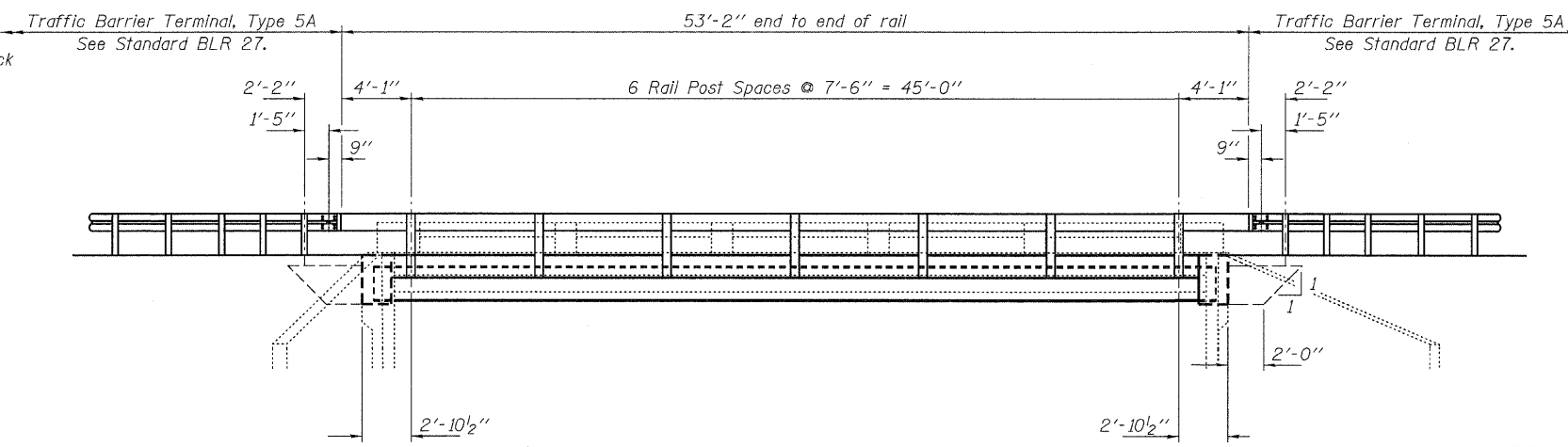
BAR	NO.	SIZE	LENGTH	SHAPE
a(E)	153	#5	27'-8"	—
a1(E)	184	#5	5'-3"	┌
a2(E)	4	#5	29'-10"	—
b(E)	87	#5	18'-11"	—
b1(E)	52	#5	26'-9"	—
m(E)	6	#6	29'-10"	—
m1(E)	20	#6	9'-7"	—
m2(E)	8	#6	5'-8"	—
m3(E)	4	#6	1'-8"	—
s(E)	52	#4	6'-11 1/2"	⊓
v(E)	104	#5	2'-11"	—
Reinforcement Bars, Epoxy Coated			Pound	9,910
Concrete Superstructures			Cu. Yd.	48.1
Bridge Deck Grooving			Sq. Yd.	147
Protective Coat			Sq. Yd.	173

Reinforcement bars designated (E) shall be epoxy coated.



SECTION A-A

(Dimensions at Right L's except as noted)
** Cost included with "Concrete Superstructure".



ELEVATION

Showing Rail Post Spaces
See sheet 17 for Railing Details.

NOTES

Reinforcement bars in the top of the deck may be placed with a 1/2" minimum clearance in the area of the rail post anchor devices. The studs of the anchor devices shall be placed below the top reinforcement bars and the outermost longitudinal reinforcement bar shall be placed directly above the studs of the rail post anchor device.
Reinforcement bars in diaphragms are billed with superstructure. Concrete in diaphragms is included with "Concrete Superstructure." For anchor bolt details see sheet 19.

DESIGNED - A.S.L.
CHECKED - M.G.B.
DRAWN - D.T.M.
CHECKED - D.A.B.

**SUPERSTRUCTURE DETAILS
STRUCTURE NO. 053-3036**

HAMPTON, LENZINI AND RENWICK, INC.
CIVIL ENGINEERS - STRUCTURAL ENGINEERS - LAND SURVEYORS
3085 STEVENSON DRIVE, SUITE 201
SPRINGFIELD, ILLINOIS 62703
217.546.3400 www.hirengineering.com
184.002859
ILLINOIS PROFESSIONAL DESIGN FIRM LS / PE / SE CORPORATION
PROJECT NUMBER: 09.0125.130 DATE: 03/25/10

C.H.	SECTION	COUNTY	TOTAL SHEETS	SHEET NO.
22	08-00161-01-BR	LIVINGSTON	23	16
CONTRACT NO. 87452				
FED. ROAD DIST. NO.		ILLINOIS FED. AID PROJECT BRS-0473(108)		