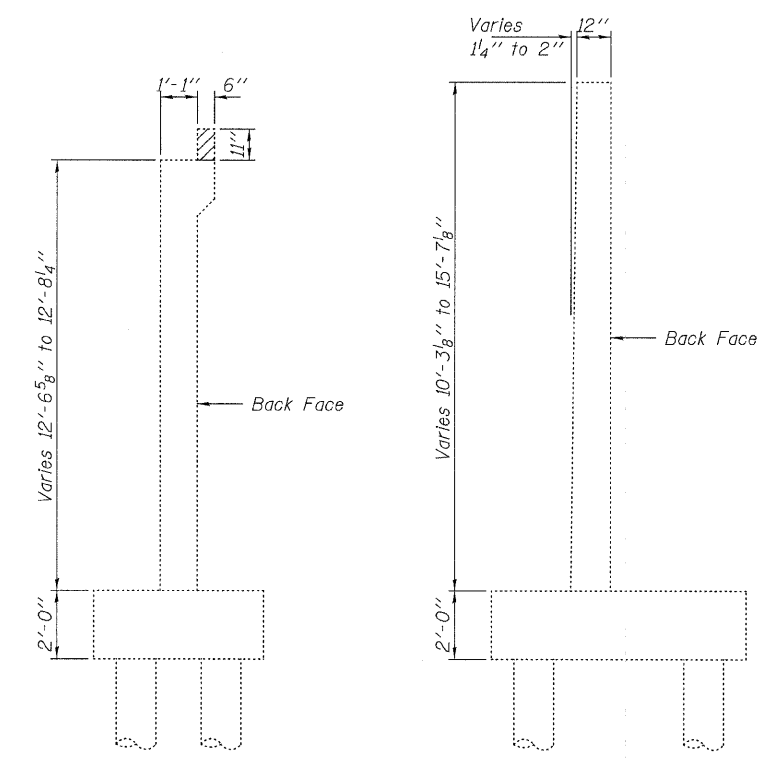
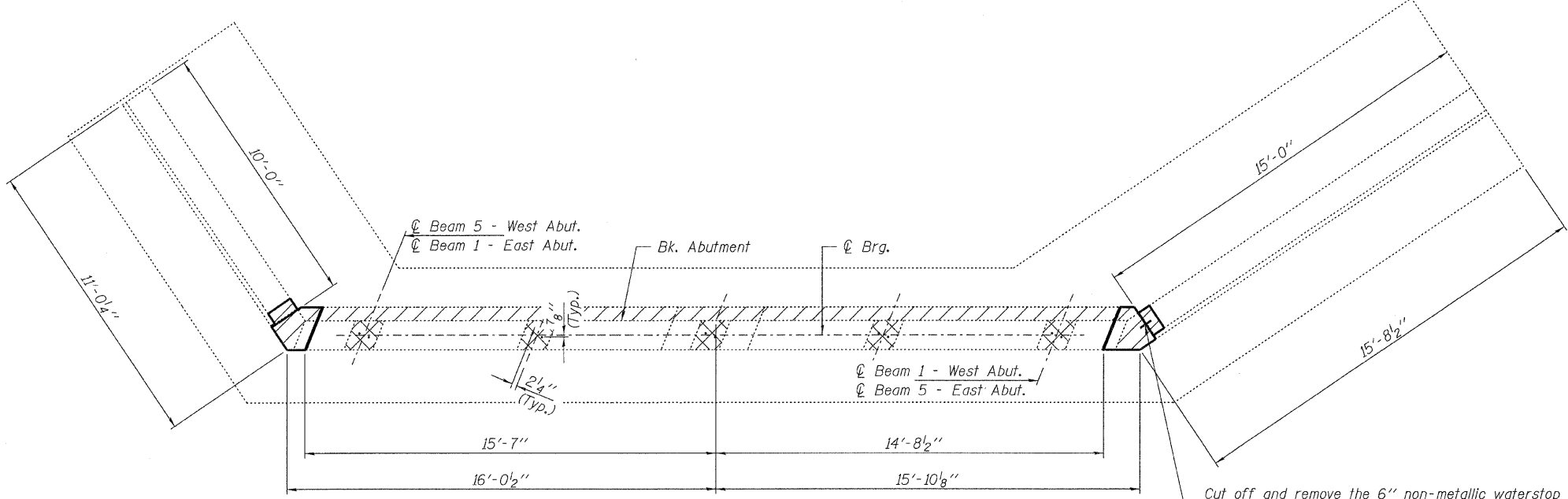


ELEVATION



SECTION A-A

SECTION B-B



PLAN

▨▨▨ Indicates Concrete Removal. The Contractor shall remove the existing concrete backwall as shown. The existing wingwall corners shall be removed and reconstructed as shown and as directed by the Engineer after the superstructure has been poured.

▣▣▣ Existing bearing seat concrete must be ground level in the area of the bearing plates. Cost included with Concrete Removal.

Notes: Backfill shall be placed behind the abutment after the superstructure has been poured and falsework removed. See Article 502.10 of the Standard Specifications.

BILL OF MATERIAL

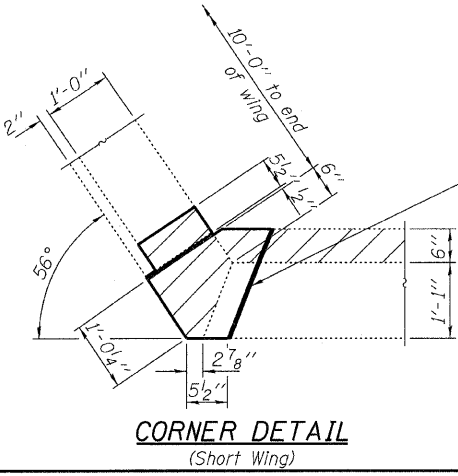
Item	Unit	Quantity
Concrete Removal	Cu. Yd.	1.8
Concrete Structures	Cu. Yd.	0.9

**ESTIMATED GRIND DEPTH (-)
OR FILL PLATE THICKNESS (+)**

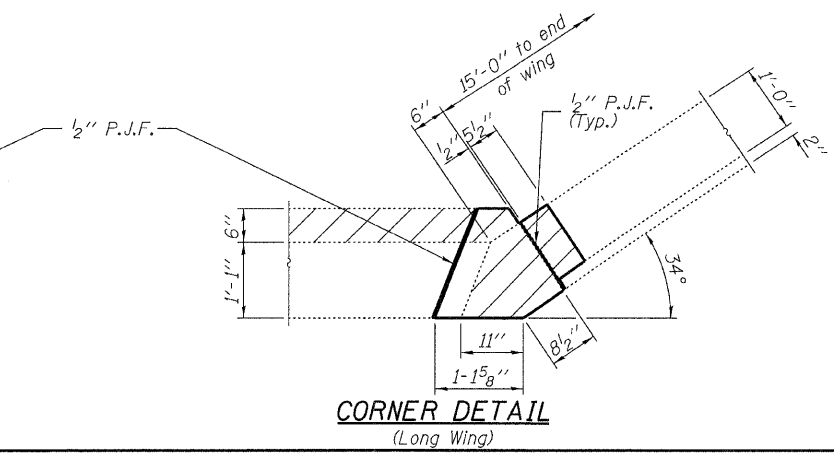
Abutment	Bm. 1	Bm. 2	Bm. 3	Bm. 4	Bm. 5
West Abutment	-5/8"	1/8" R	1/8" R	3/8" R	-5/16"
East Abutment	1/8" R	7/8" R	1 5/8" R	5/8" R	-1/8"

**ABUTMENTS - CONCRETE REMOVAL
STRUCTURE NO. 053-3036**

DESIGNED - A.S.L.
CHECKED - M.G.B.
DRAWN - D.T.M.
CHECKED - D.A.B.



CORNER DETAIL
(Short Wing)



CORNER DETAIL
(Long Wing)

HAMPTON, LENZINI AND RENWICK, INC.
 CIVIL ENGINEERS - STRUCTURAL ENGINEERS - LAND SURVEYORS
 3085 STEVENSON DRIVE, SUITE 201
 SPRINGFIELD, ILLINOIS 62703
 217.546.3400 www.hlrenr.com

184.00089
 ILLINOIS PROFESSIONAL DESIGN FIRM LS / PE / SE CORPORATION

PROJECT NUMBER: 09.0125.130 DATE: 03/25/10

C.H.	SECTION	COUNTY	TOTAL SHEETS	SHEET NO.
22	08-00161-01-BR	LIVINGSTON	23	20
CONTRACT NO. 87452				
FED. ROAD DIST. NO.		ILLINOIS FED. AID PROJECT BRS-0473(108)		