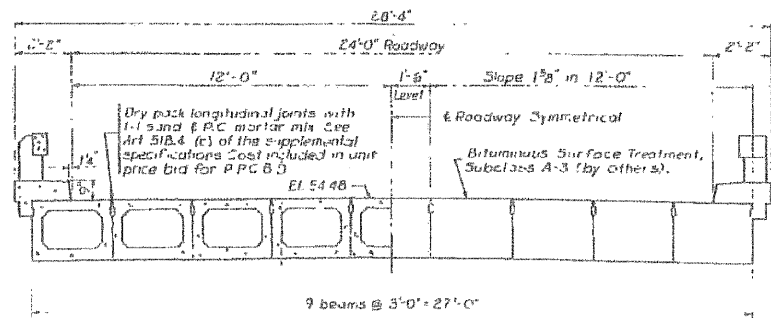
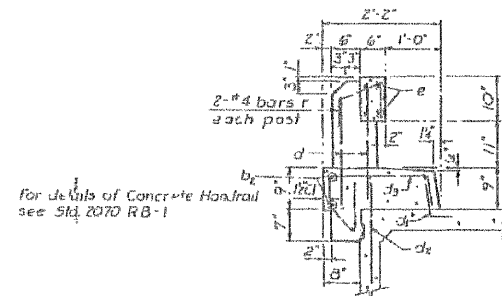


PROJECT NO.	CONTRACT	TOTAL SHEETS	SHEET NO.
Livingston			2 OF 3
SHEET 2 OF 3			



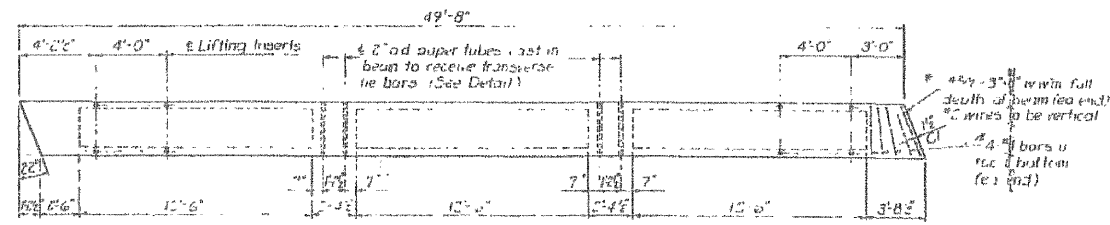
HALF CROSS SECTION HALF END ELEVATION



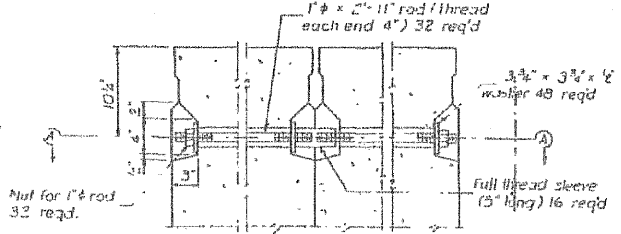
HANDRAIL & CURB DETAILS

Curbs are not to be cast with beams. Curbs to be poured after beams are set in final position. Curbs to be paid for as Class X Concrete.

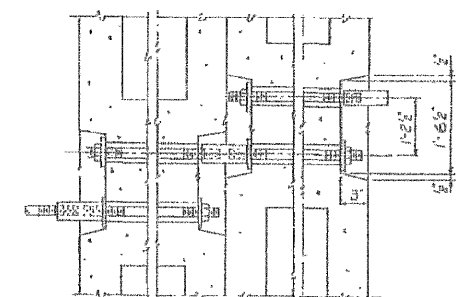
Note: Pockets that receive transverse tie bar or outside beams shall be filled with grout after transverse tie assembly is in place. Provide expansion holes and vent holes in each end of each void. Vent holes shall be filled with grout before applying the roadway surfacing.



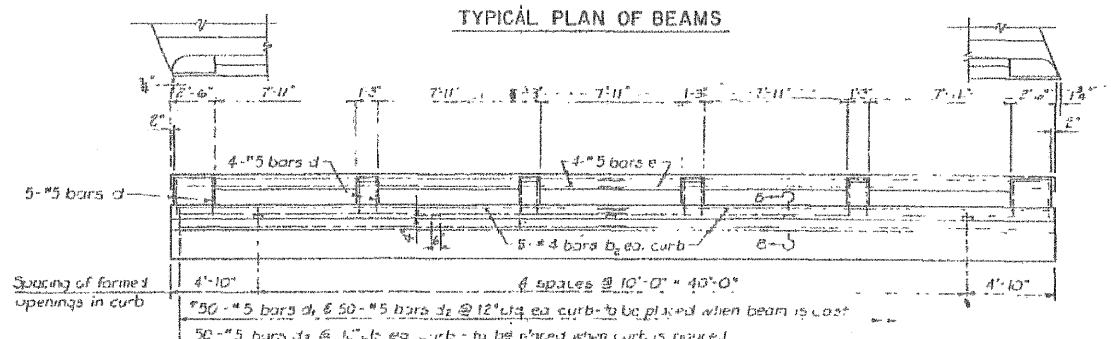
TYPICAL PLAN OF BEAMS



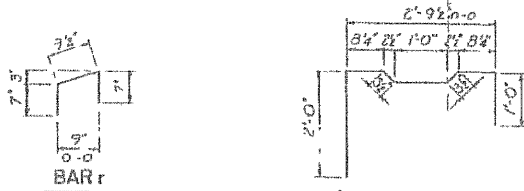
TYPICAL TRANSVERSE TIE ASSEMBLY



SECTION A-A

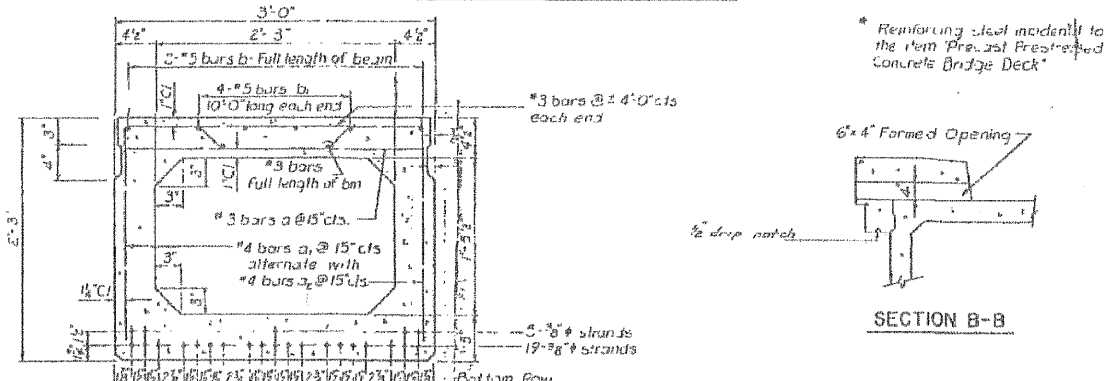


ELEVATION OF OUTSIDE BEAMS



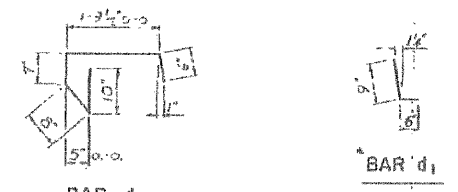
BAR r

BARS d1 & d2



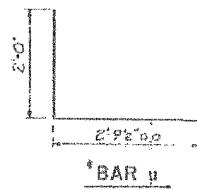
TYPICAL SECTION THRU BEAMS

SECTION B-B



BAR d3

BAR d1



BAR u

BILL OF MATERIAL
SUPERSTRUCTURE

BAR	NO	SIZE	LENGTH	SHAPE
d ₂	20	#4	25'-6"	
d	52	#5	2'-2"	
d ₃	100	#5	4'-5"	
e	16	#5	24'-4"	
r	24	#4	2'-0"	

Precast Prestressed Concrete Bridge Deck	39 FT	1341
Handrail Concrete	Cu. Yds.	2.3
Class X Concrete	Cu. Yds.	0.9
Reinforcement Bars	Lbs.	1350

SUPERSTRUCTURE
KESSLER BRIDGE SEC. 161-B-M.F.T.
FAYETTE ROAD DISTRICT
LIVINGSTON COUNTY
STATION 4 + 00
WALTER E. HANSON & COMPANY
ENGINEERS - CONSULTANTS

DESIGNED: H.E.O. CHECKED: H.C. DATE: 11-22-64 SHEET: 52-17C

DESIGNED	- A.S.L.
CHECKED	- M.G.B.
DRAWN	- D.T.M.
CHECKED	- D.A.B.

EXISTING PLANS
STRUCTURE NO. 053-3036

HAMPTON, LENZINI AND RENWICK, INC.
CIVIL ENGINEERS - STRUCTURAL ENGINEERS - LAND SURVEYORS
3085 STEVENSON DRIVE, SUITE 201
SPRINGFIELD, ILLINOIS 62703
217.546.3400 www.hlrengineering.com
194.00299
ILLINOIS PROFESSIONAL DESIGN FIRM LS / PE / SE CORPORATION
PROJECT NUMBER: 09.0125.130 DATE: 03/25/10

C.H.	SECTION	COUNTY	TOTAL SHEETS	SHEET NO.
22	08-00161-01-BR	LIVINGSTON	23	22
CONTRACT NO. 87452				
FED. ROAD DIST. NO.	ILLINOIS FED. AID PROJECT BRS-0473(108)			