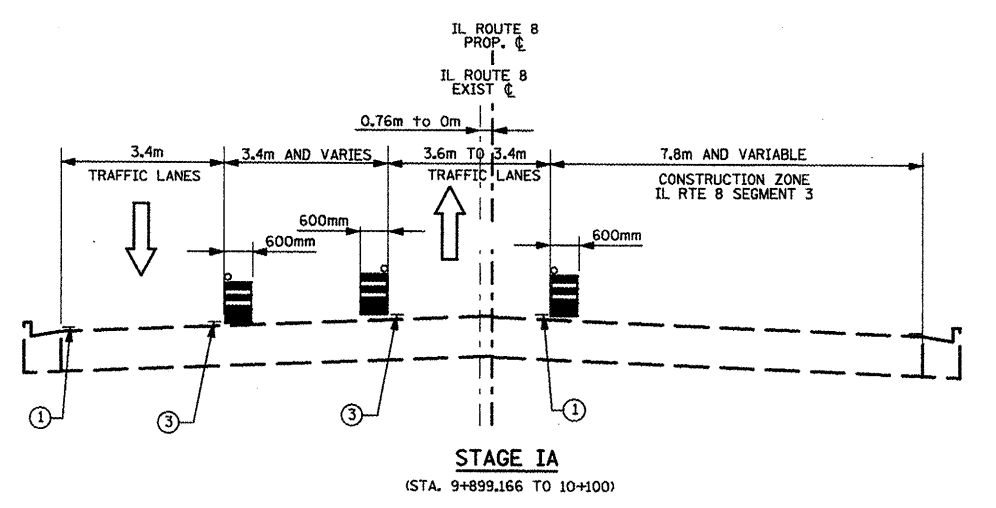
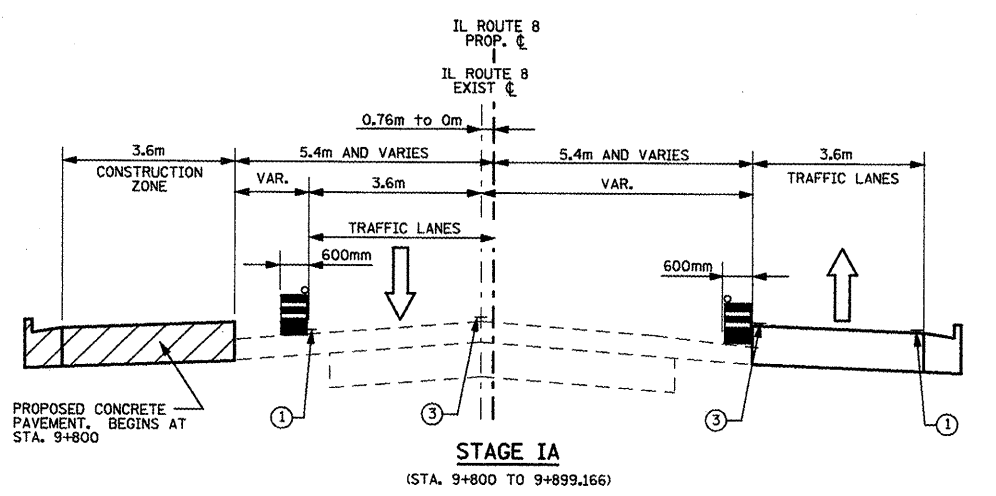
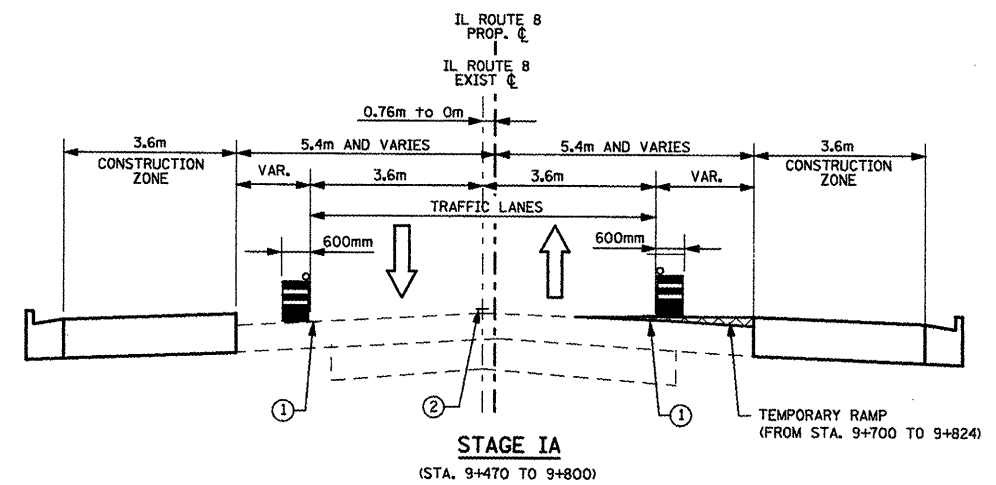


F.A.P. RTE.	SECTION	COUNTY	TOTAL SHEETS	SHEET NO.
399	36R-1,37R-2	TAZEWELL	449	46
STA 7+663.000		TO STA 10+097.000		
FED. ROAD DIST. NO. 4		ILLINOIS FED. AID PROJECT		



- NOTES:**
- 1) TYPICAL SECTIONS REFLECT APPROXIMATE LIMITS FOR EXISTING TRAFFIC AND CONSTRUCTION ZONE RELATIONSHIPS ONLY. SEE M.O.T. PLANS AND NOTES FOR ADDITIONAL DETAILS.
 - 2) GAPS IN STATIONING REFLECT TRANSITION AREAS OR LANE SHIFTS. SEE M.O.T. PLANS FOR ADDITIONAL DETAILS.
 - 3) IN IA STAGE EAST BOUND TRAFFIC FROM 9+650 TO 9+899.166 IS UTILIZED ON SOUTH SIDE OF ROADWAY TO ALLOW CONSTRUCTION OF WEST BOUND FROM 9+800 TO 9+899.166.

- LEGEND**
- PROPOSED CONSTRUCTION DURING STAGE
 - CONSTRUCTION FROM PREVIOUS STAGE
 - PRE STAGE I TEMPORARY PAVEMENT
 - TYPE II BARRICADE OR DRUMS
 - TEMPORARY PAVEMENT MARKING LINE - 100MM WHITE
 - TEMPORARY PAVEMENT MARKING LINE - 100MM DOUBLE YELLOW
 - TEMPORARY PAVEMENT MARKING LINE - 100MM YELLOW

REVISIONS	
NAME	DATE
LCE	1/5/10

ILLINOIS DEPARTMENT OF TRANSPORTATION
 ILLINOIS ROUTE 8 - SEGMENT 2
 MAINTENANCE OF TRAFFIC
 TYPICAL SECTIONS
 STAGE IA

SCALE: NTS
 DATE: DECEMBER, 2003

DRAWN BY: RDT
 CHECKED BY: YPG