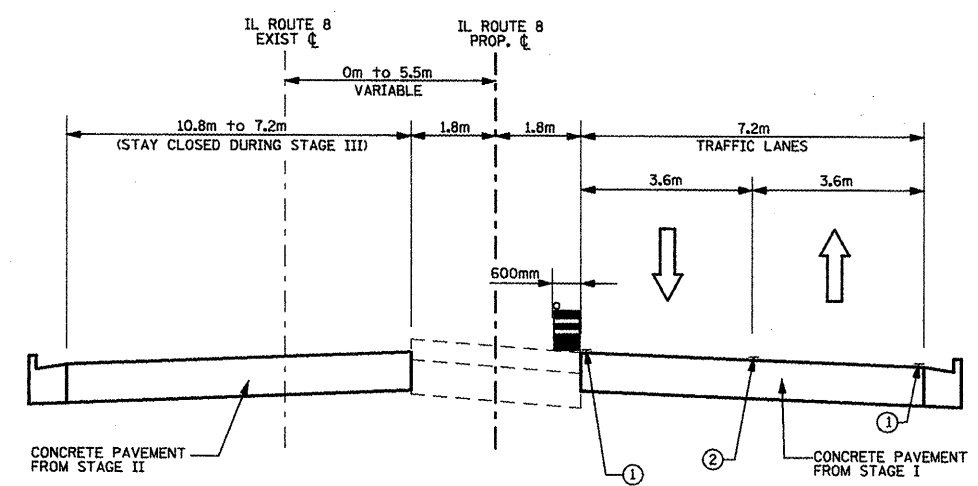
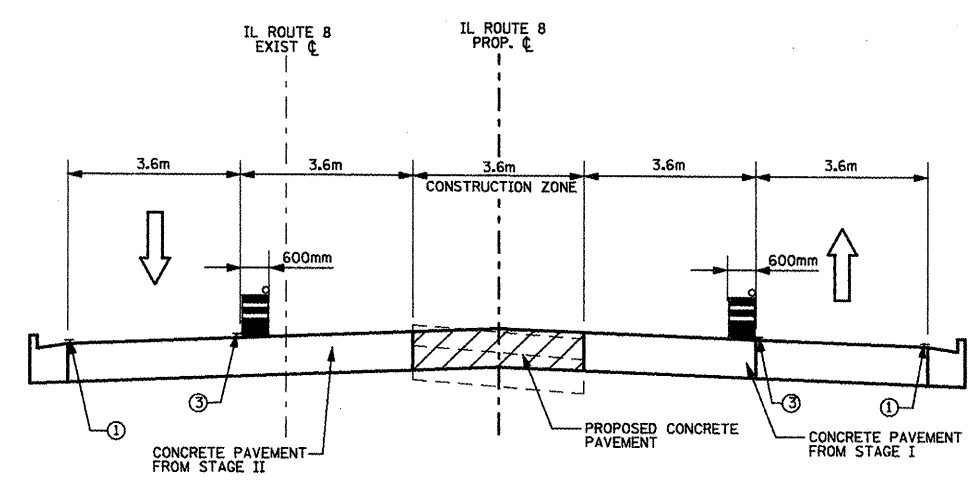


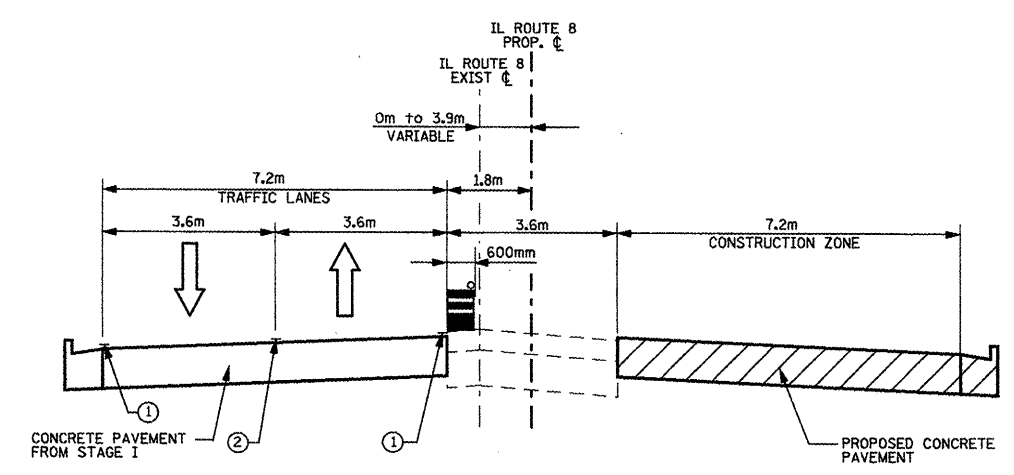
F.A.P. RTE.	SECTION	COUNTY	TOTAL SHEETS	SHEET NO.
399	36R-1,37R-2	TAZEVELL	449	48
STA 7+663.000		TO STA 10+097.000		
FED. ROAD DIST. NO. 4		ILLINOIS FED. AID PROJECT		



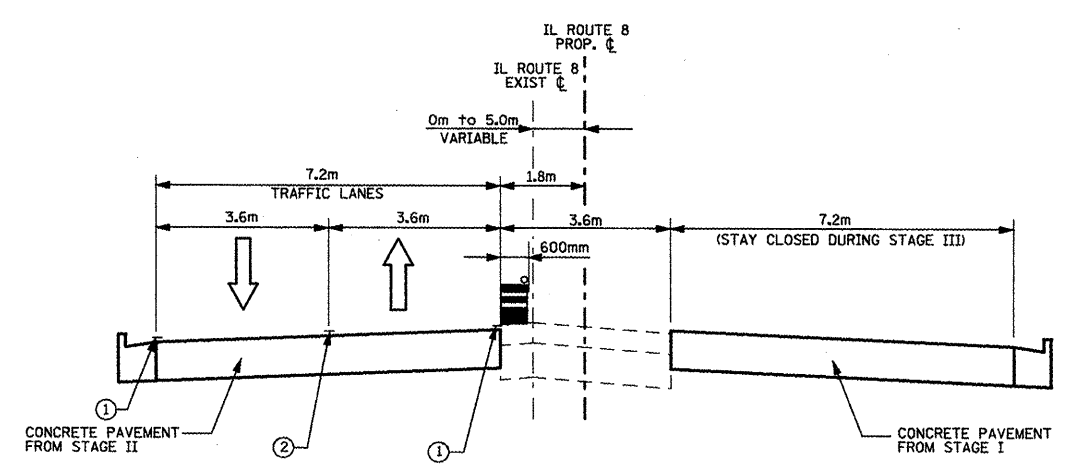
STAGE III
(STA. 7+663 TO 8+150)



STAGE IV
(STA. 7+663 TO 9+065)

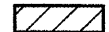








STAGE III
(STA. 8+280 TO 8+800)



STAGE III
(STA. 8+800 TO 9+726)

LEGEND

-  PROPOSED CONSTRUCTION DURING STAGE
-  CONSTRUCTION FROM PREVIOUS STAGE
-  PRE STAGE I TEMPORARY PAVEMENT
-  TYPE II BARRICADE OR DRUM
-  TEMPORARY PAVEMENT MARKING, LINE - 100MM WHITE LINE
-  TEMPORARY PAVEMENT MARKING, LINE - 100MM DOUBLE YELLOW LINE
-  TEMPORARY PAVEMENT MARKING, LINE - 100MM YELLOW LINE

NOTES:

- 1) TYPICAL SECTIONS REFLECT APPROXIMATE LIMITS FOR EXISTING TRAFFIC AND CONSTRUCTION ZONE RELATIONSHIPS ONLY. SEE M.O.T. PLANS AND NOTES FOR ADDITIONAL DETAILS.
- 2) GAPS IN STATIONING REFLECT TRANSITION AREAS OR LANE SHIFTS. SEE M.O.T. PLANS FOR ADDITIONAL DETAILS.

REVISIONS	
NAME	DATE

ILLINOIS DEPARTMENT OF TRANSPORTATION
ILLINOIS ROUTE 8 - SEGMENT 2
MAINTENANCE OF TRAFFIC
TYPICAL SECTIONS
STAGE III AND IV
SCALE: NTS
DATE: DECEMBER, 2003
DRAWN BY: RLK
CHECKED BY: YPG