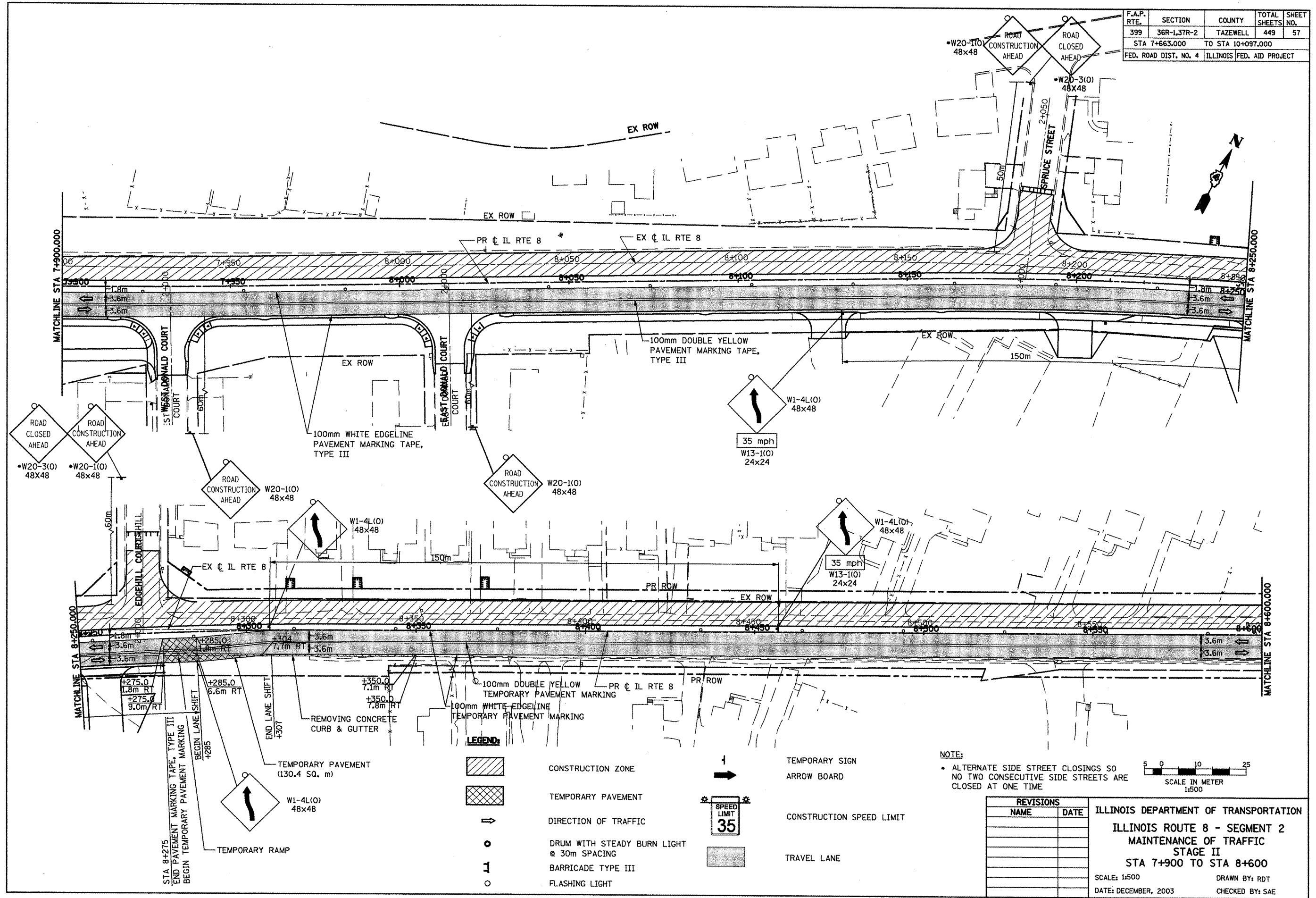
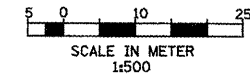


F.A.P. RTE.	SECTION	COUNTY	TOTAL SHEETS	SHEET NO.
399	36R-1.37R-2	TAZEWELL	449	57
STA 7+663.000		TO STA 10+097.000		
FED. ROAD DIST. NO. 4		ILLINOIS		FED. AID PROJECT



- LEGEND:**
- CONSTRUCTION ZONE
 - TEMPORARY PAVEMENT
 - DIRECTION OF TRAFFIC
 - DRUM WITH STEADY BURN LIGHT @ 30m SPACING
 - BARRICADE TYPE III
 - FLASHING LIGHT
 - TEMPORARY SIGN ARROW BOARD
 - CONSTRUCTION SPEED LIMIT
 - TRAVEL LANE

NOTE:
 • ALTERNATE SIDE STREET CLOSINGS SO NO TWO CONSECUTIVE SIDE STREETS ARE CLOSED AT ONE TIME



REVISIONS	
NAME	DATE

ILLINOIS DEPARTMENT OF TRANSPORTATION
 ILLINOIS ROUTE 8 - SEGMENT 2
 MAINTENANCE OF TRAFFIC
 STAGE II
 STA 7+900 TO STA 8+600

SCALE: 1:500
 DATE: DECEMBER, 2003

DRAWN BY: RDT
 CHECKED BY: SAE