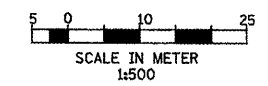
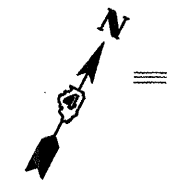
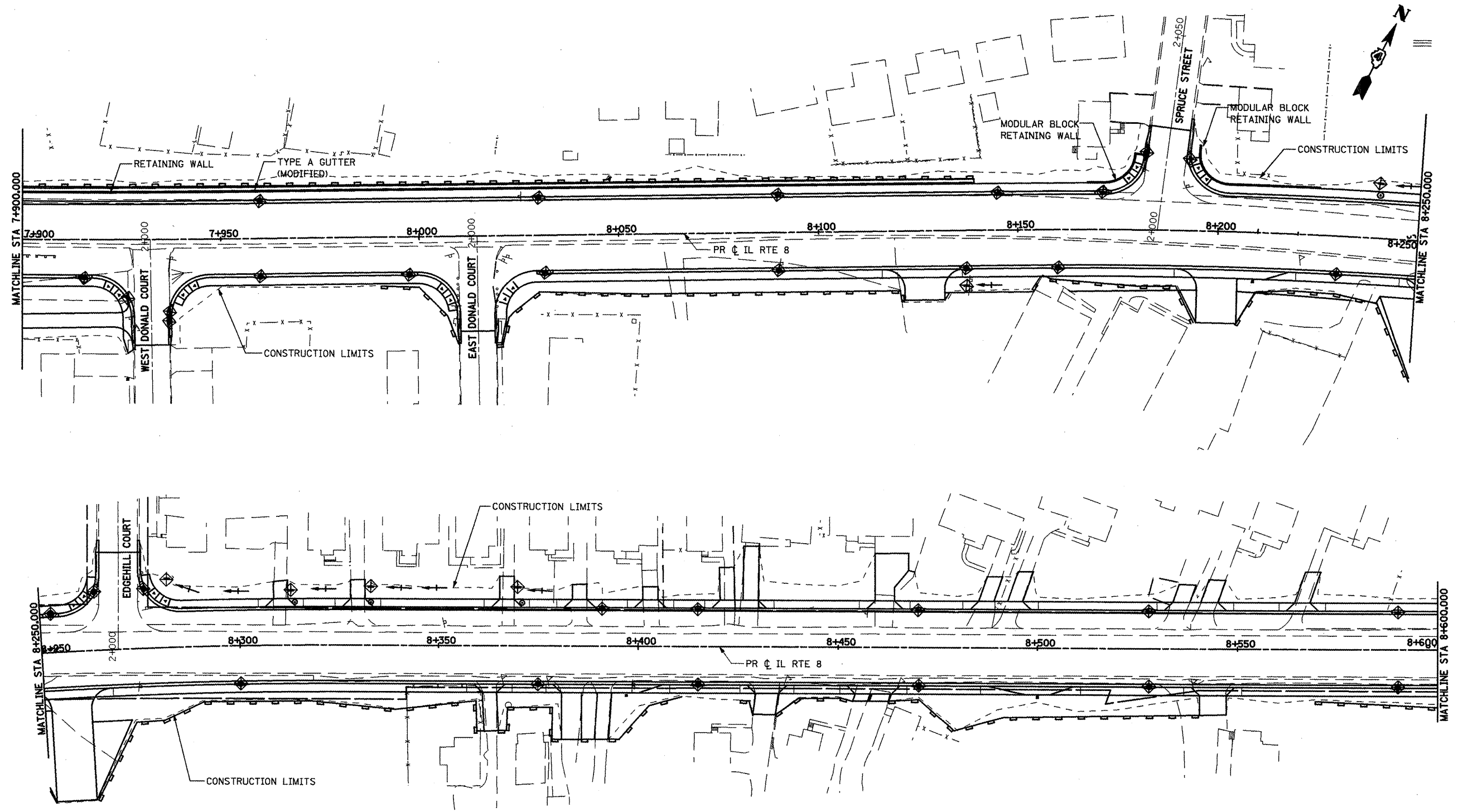


F.A.P. RTE.	SECTION	COUNTY	TOTAL SHEETS	SHEET NO.
399	36R-1,37R-2	TAZEVELL	449	70
STA 7+663,000		TO STA 10+097,000		
FED. ROAD DIST. NO. 4		ILLINOIS FED. AID PROJECT		



- NOTES:**
- FOR MORE DRAINAGE INFORMATION SEE DRAINAGE AND UTILITIES PLANS.
 - PERIMETER EROSION BARRIER IS LOCATED ON TEMP. EASEMENT/PERM. EASEMENT/R.O.W. LINE ON THE NORTH AND SOUTH SIDES OF THE MAINLINE AS SHOWN ON THE PLANS.
 - FOR PERMANENT EROSION CONTROL INFORMATION SEE LANDSCAPING PLANS.

- LEGEND:**
- INLET AND PIPE PROTECTION
 - PERIMETER EROSION BARRIER
 - TEMPORARY DITCH CHECK
 - DITCH FLOW
 - SWALE
 - CONSTRUCTION LIMITS

REVISIONS	
NAME	DATE
LCE	3-10-10

ILLINOIS DEPARTMENT OF TRANSPORTATION
ILLINOIS ROUTE 8 - SEGMENT 2
TEMPORARY EROSION CONTROL PLAN
STA 7+900 TO STA 8+600

SCALE: 1:500
DATE: DECEMBER, 2003

DRAWN BY: RDT
CHECKED BY: SAE