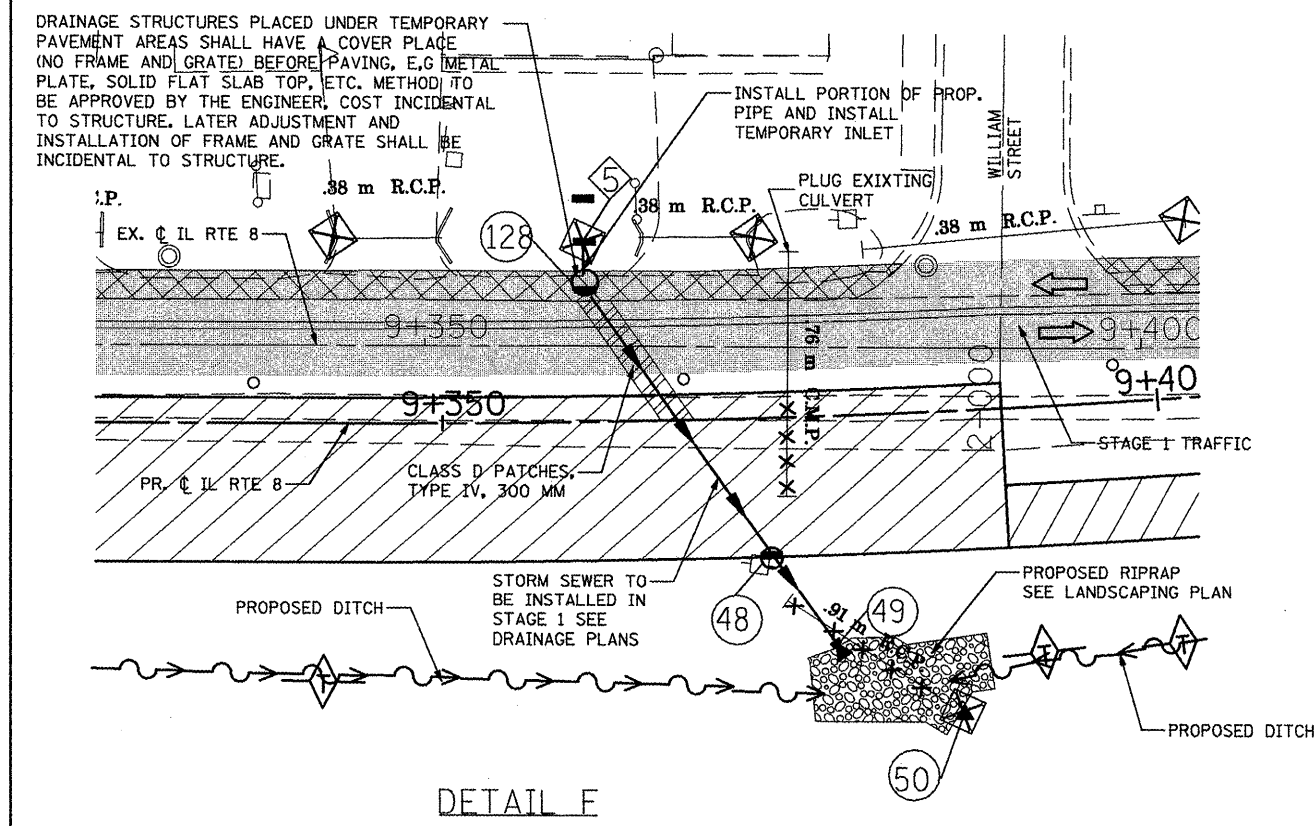
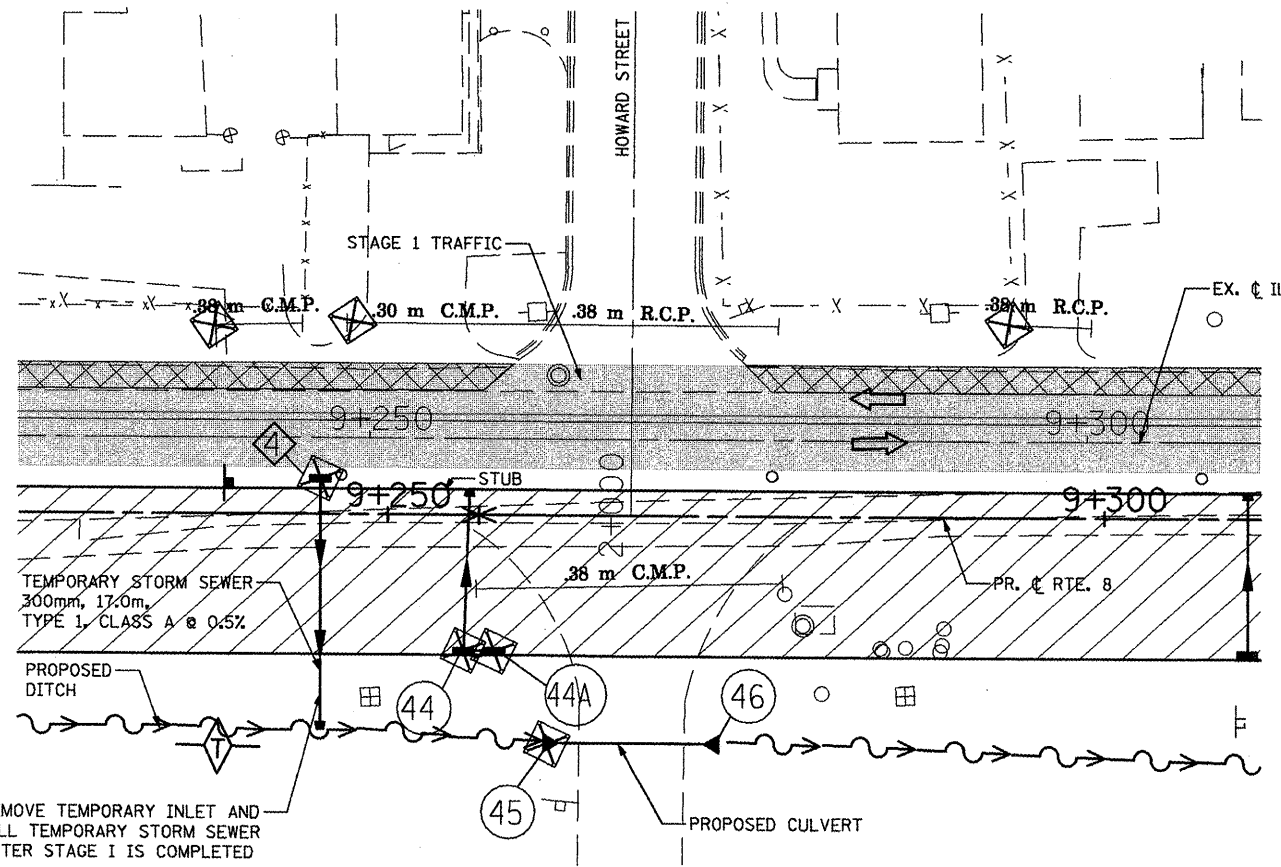
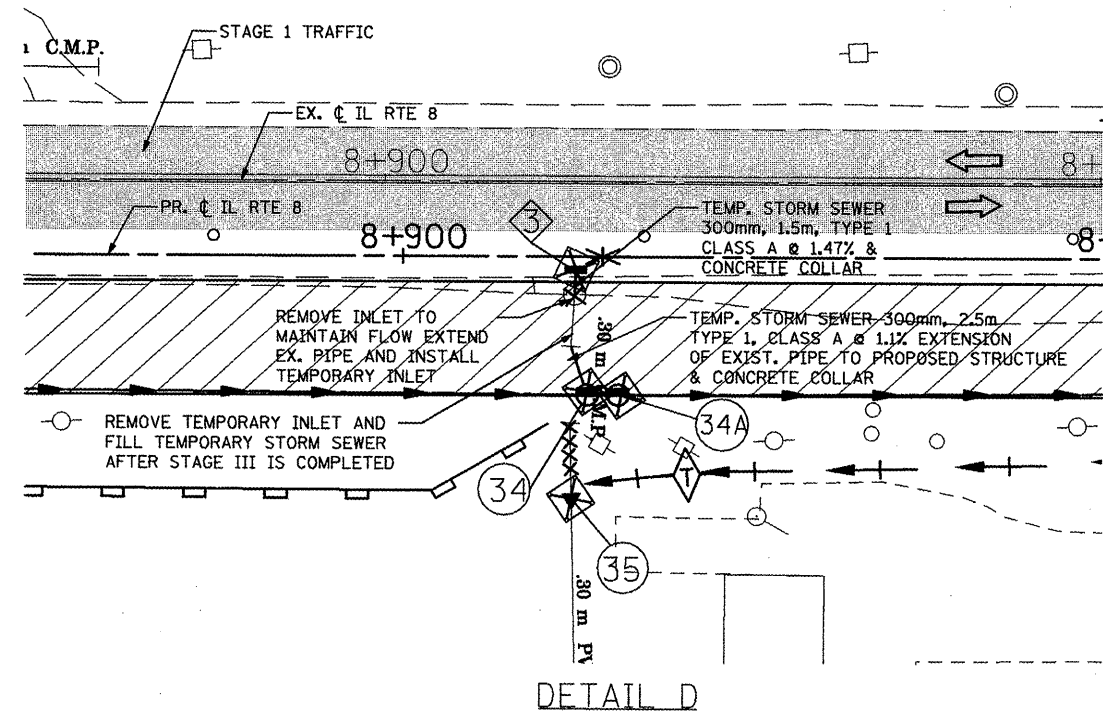
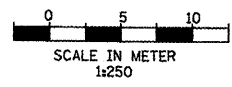


F.A.P. RTE.	SECTION	COUNTY	TOTAL SHEETS	SHEET NO.
399	36R-1, (37R-2)	TAZEWELL	449	74
STA 7+663,000		TO STA 10+097,000		
FED. ROAD DIST. NO. 4		ILLINOIS FED. AID PROJECT		



- LEGEND**
- TEMPORARY DRAINAGE STRUCTURE SEE SCHEDULE
 - INLET AND PIPE PROTECTION
 - DRAINAGE REMOVAL
 - TEMPORARY PAVEMENT
 - DRAINAGE STRUCTURE SEE SCHEDULE
 - STAGE 1 WORK ZONE SEE MOT PLANS
 - EXISTING STORM SEWER
 - PROPOSED STORM SEWER
 - PERIMETER EROSION BARRIER
 - OPEN TRAFFIC LANE

- NOTES:**
- POSITIVE DRAINAGE WILL BE MAINTAINED DURING ALL STAGES OF CONSTRUCTION.
 - FOR MORE INFO ON STAGES OF CONSTRUCTION, TRAFFIC AND TEMPORARY PAVEMENT SEE MOT PLANS.
 - FOR MORE TEMPORARY EROSION CONTROL INFO, SEE TEMPORARY EROSION PLANS
 - FOR MORE DRAINAGE INFORMATION, SEE DRAINAGE AND UTILITIES PLANS.
 - FOR PERMANENT EROSION CONTROL INFORMATION, SEE LANDSCAPE PLANS.
 - THE DETAILS ARE SUGGESTED SOLUTIONS FOR SOME OF THE DRAINAGE PROBLEMS DURING STAGE I CONSTRUCTION. TEMPORARY DRAINAGE DURING STAGES OF CONSTRUCTION SHALL BE CONDUCTED BY CONTRACTOR AND APPROVED BY THE ENGINEER.



REVISIONS	
NAME	DATE
LCE	1-8-10

ILLINOIS DEPARTMENT OF TRANSPORTATION
 ILLINOIS ROUTE 8 - SEGMENT 2
 TEMPORARY DRAINAGE DETAILS

SCALE: 1:250
 DATE: _____
 DRAWN BY: RDT
 CHECKED BY: SAE