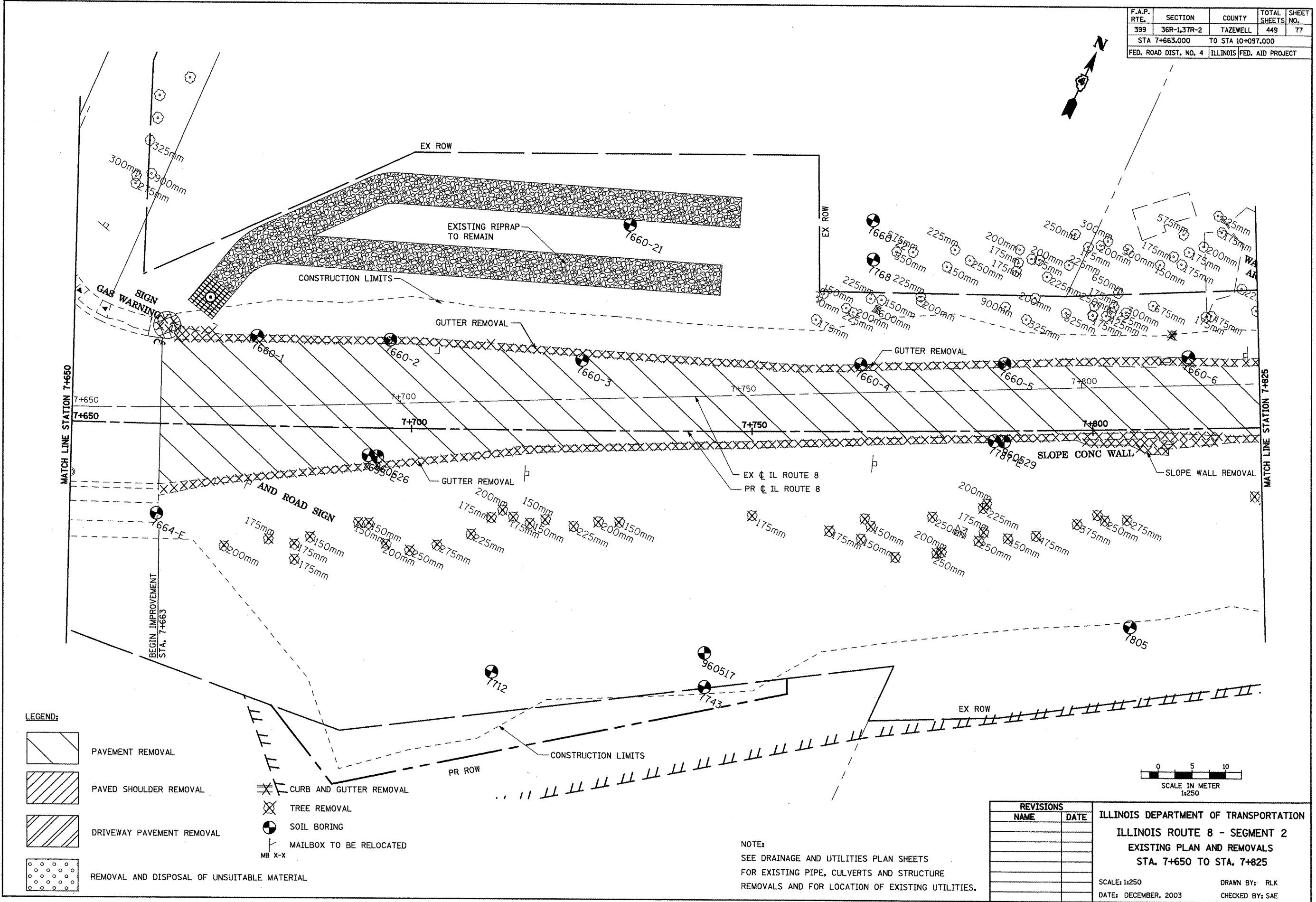


F.A.P. RTE.	SECTION	COUNTY	TOTAL SHEETS	SHEET NO.
399	36R-1,37R-2	TAZEVELL	449	77
STA 7+663.000		TO STA 10+097.000		
FED. ROAD DIST. NO. 4		ILLINOIS FED. AID PROJECT		



LEGEND:

- PAVEMENT REMOVAL
- PAVED SHOULDER REMOVAL
- DRIVEWAY PAVEMENT REMOVAL
- REMOVAL AND DISPOSAL OF UNSUITABLE MATERIAL
- CURB AND GUTTER REMOVAL
- TREE REMOVAL
- SOIL BORING
- MAILBOX TO BE RELOCATED

NOTE:  
SEE DRAINAGE AND UTILITIES PLAN SHEETS  
FOR EXISTING PIPE, CULVERTS AND STRUCTURE  
REMOVALS AND FOR LOCATION OF EXISTING UTILITIES.

REVISIONS	
NAME	DATE

ILLINOIS DEPARTMENT OF TRANSPORTATION  
ILLINOIS ROUTE 8 - SEGMENT 2  
EXISTING PLAN AND REMOVALS  
STA. 7+650 TO STA. 7+825

SCALE: 1:250  
DATE: DECEMBER, 2003

DRAWN BY: RLK  
CHECKED BY: SAE