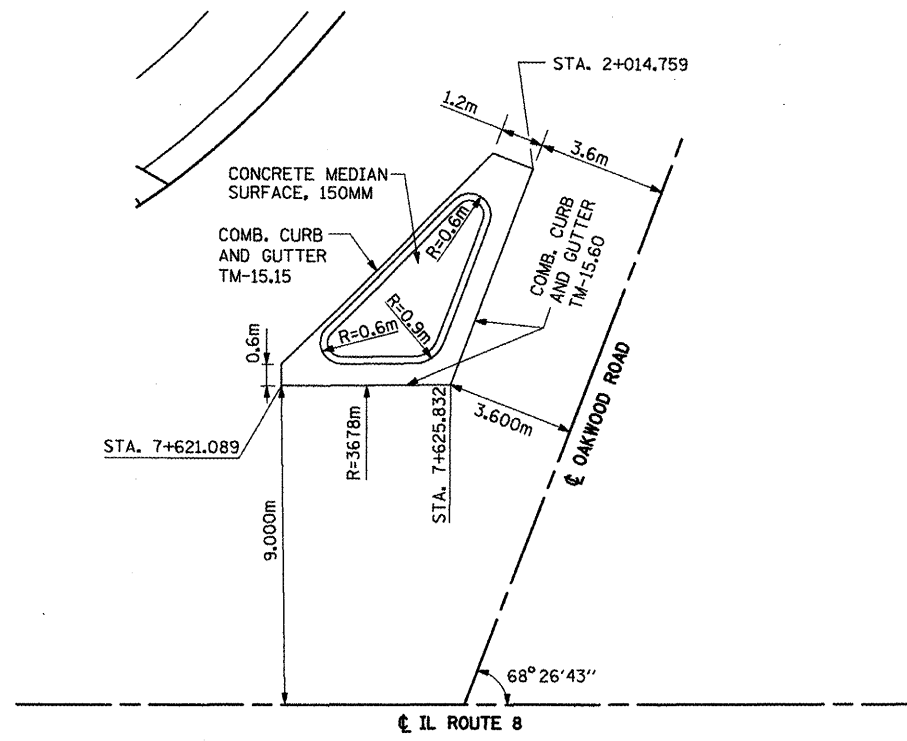
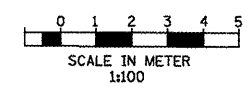


F.A.P. RTE.	SECTION	COUNTY	TOTAL SHEETS	SHEET NO.
399	36R-1.37R-2.	TAZEWELL	449	90
STA 7+663.000		TO STA 10+097.000		
FED. ROAD DIST. NO. 4		ILLINOIS FED. AID PROJECT		

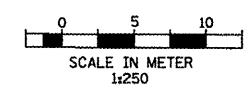
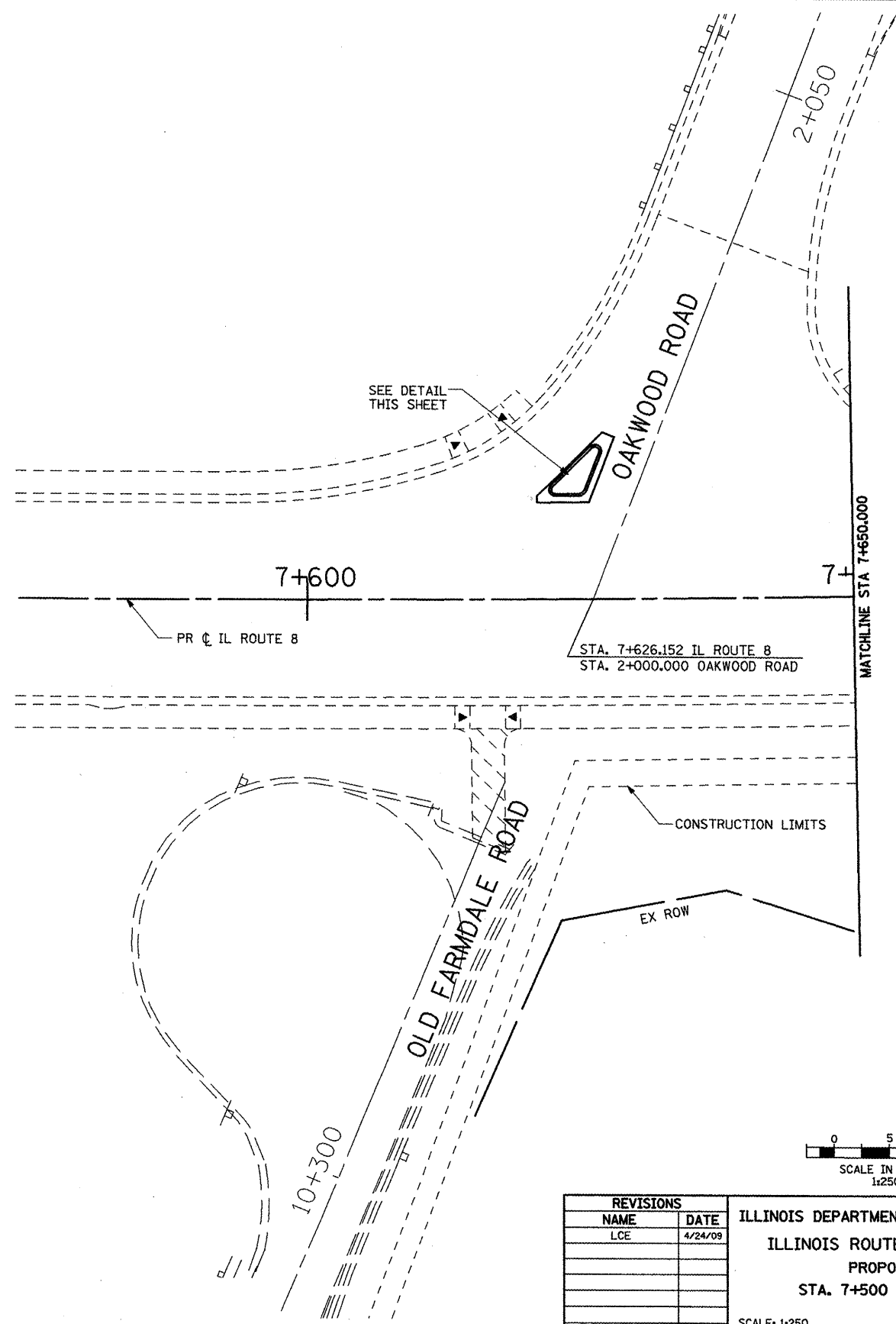


OAKWOOD ROAD CONCRETE ISLAND DETAIL



KEY

- 1 P.C.C. PAVEMENT, 250mm (JOINTED)
- 2 H.M.A. BASE COURSE, 200mm
- 3 H.M.A. BASE COURSE, 150mm
- 4 POLY. H.M.A. SURFACE COURSE MIX "D", N50, 40mm
- 5 P.C.C. DRIVEWAY PAVEMENT, 200mm
- 6 P.C.C. DRIVEWAY PAVEMENT, 150mm
- 7 AGGREGATE BASE COURSE, TYPE B, 200mm
- 8 INCIDENTAL H.M.A. SURFACING, 75mm
- 9 INCIDENTAL H.M.A. SURFACING, 40mm
- 10 SUBBASE GRANULAR MATERIAL, TYPE A, 300mm



REVISIONS	
NAME	DATE
LCE	4/24/09

ILLINOIS DEPARTMENT OF TRANSPORTATION  
 ILLINOIS ROUTE 8 - SEGMENT 2  
 PROPOSED PLAN  
 STA. 7+500 TO STA. 7+650  
 SCALE: 1:250  
 DATE: DECEMBER, 2003  
 DRAWN BY: RLK  
 CHECKED BY: SAE