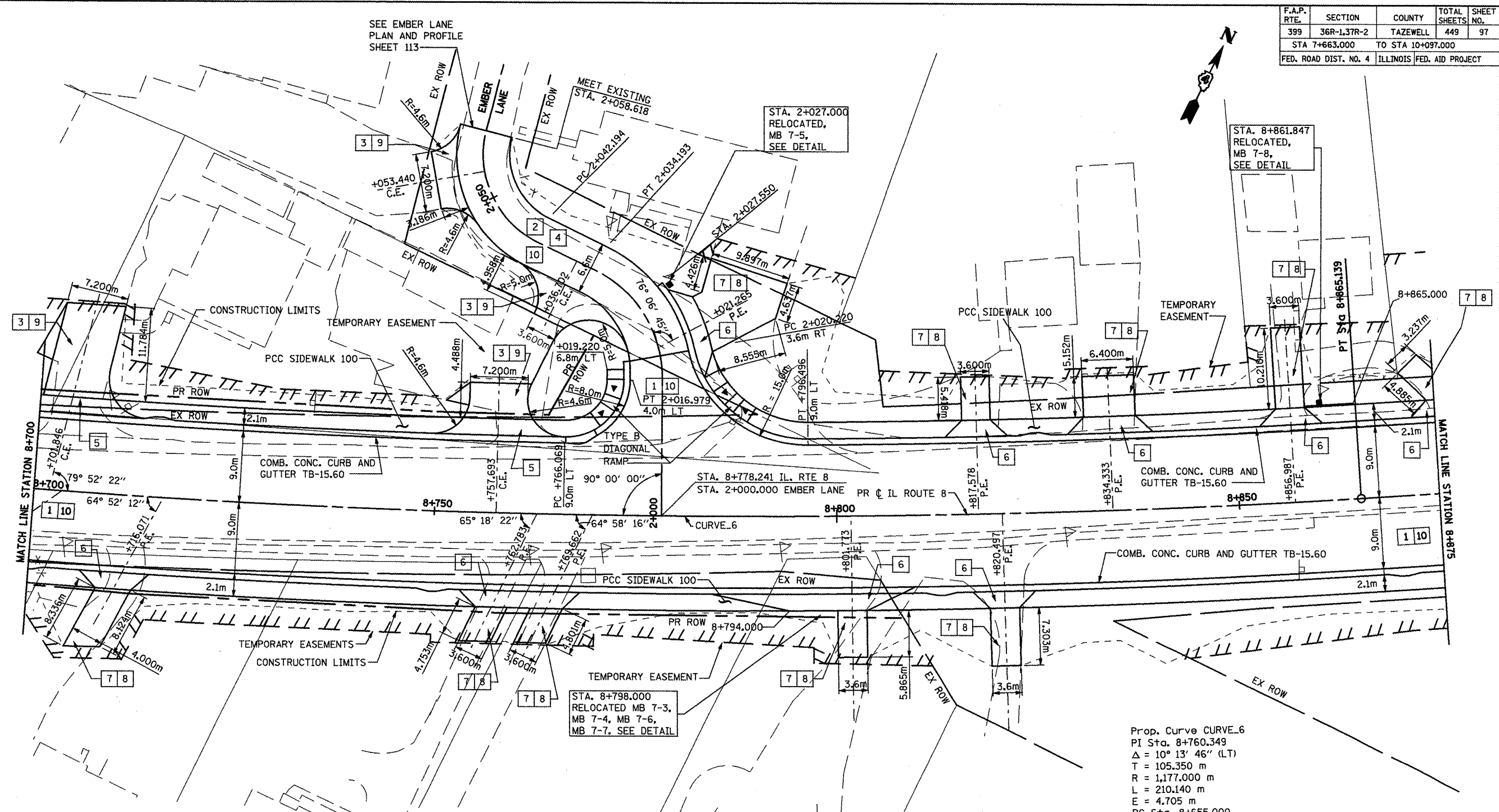


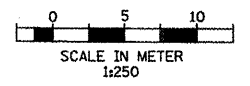
F.A.P. RTE.	SECTION	COUNTY	TOTAL SHEETS	SHEET NO.
399	36R-L37R-2	TAZEWELL	449	97
STA 7+663.000		TO STA 10+097.000		
FED. ROAD DIST. NO. 4		ILLINOIS FED. AID PROJECT		



- KEY**
- 1 P.C.C. PAVEMENT, 250mm (JOINTED)
 - 2 H.M.A. BASE COURSE, 200mm
 - 3 H.M.A. BASE COURSE, 150mm
 - 4 POLY. H.M.A. SURFACE COURSE MIX "D", N50, 40mm
 - 5 P.C.C. DRIVEWAY PAVEMENT, 200mm
 - 6 P.C.C. DRIVEWAY PAVEMENT, 150mm
 - 7 AGGREGATE BASE COURSE, TYPE B, 200mm
 - 8 INCIDENTAL H.M.A. SURFACING, 75mm
 - 9 INCIDENTAL H.M.A. SURFACING, 40mm
 - 10 SUBBASE GRANULAR MATERIAL, TYPE A, 300mm

BENCHMARK
 BM #109;
 FD. RRS IN POWER POLE AT NW CORNER OF YARD AT HOUSE NO.3406 ACROSS FROM L & L MOTEL.
 ELEVATION = 205.2466

Prop. Curve CURVE_6
 PI Sta. 8+760.349
 $\Delta = 10^\circ 13' 46''$ (LT)
 T = 105.350 m
 R = 1,177.000 m
 L = 210.140 m
 E = 4.705 m
 PC Sta. 8+655.000
 PT Sta. 8+865.139
 e =



- NOTE**
- PROFILES ARE SHOWN ON PROPOSED PROFILE SHEETS.
 - 5m RADIUS IS USED ON ALL COMMERCIAL DRIVEWAYS UNLESS OTHERWISE SHOWN.
 - DRIVEWAY CENTERLINES ARE ORTHOGONAL TO STREET ALIGNMENTS UNLESS OTHERWISE NOTED.

REVISIONS	
NAME	DATE
LCE	4/30/09

ILLINOIS DEPARTMENT OF TRANSPORTATION
ILLINOIS ROUTE 8 - SEGMENT 2
PROPOSED PLAN
STA. 8+700 TO STA. 8+875

SCALE: 1:250
 DATE: DECEMBER, 2003

DRAWN BY: RLK
 CHECKED BY: SAE