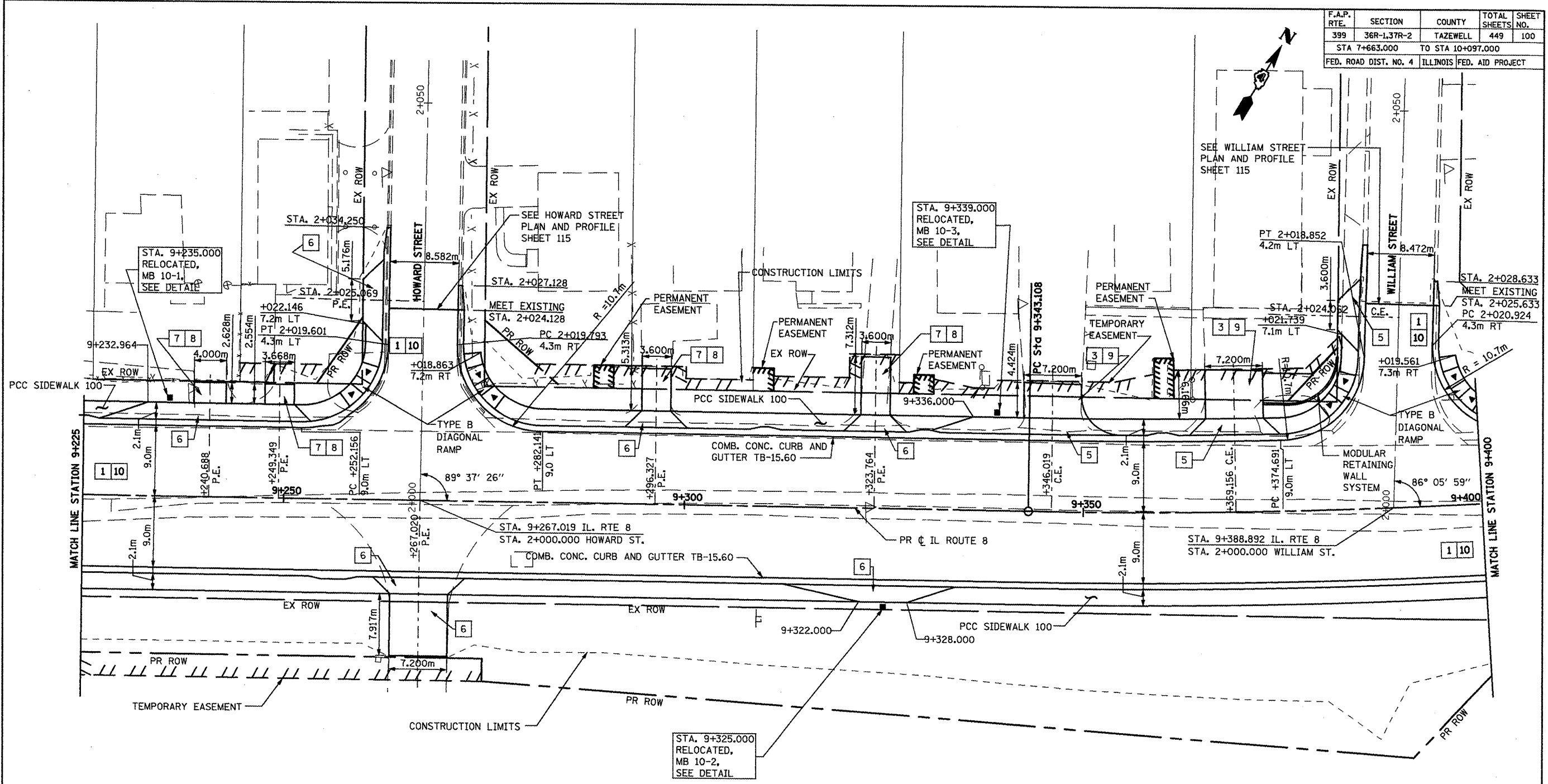
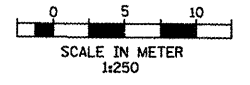


F.A.P. RTE.	SECTION	COUNTY	TOTAL SHEETS	SHEET NO.
399	36R-1,37R-2	TAZEWELL	449	100
STA 7+663.000			TO STA 10+097.000	
FED. ROAD DIST. NO. 4 ILLINOIS FED. AID PROJECT				



- KEY**
- 1 P.C.C. PAVEMENT, 250mm (JOINTED)
  - 2 H.M.A. BASE COURSE, 200mm
  - 3 H.M.A. BASE COURSE, 150mm
  - 4 POLY. H.M.A. SURFACE COURSE MIX "D", N50, 40mm
  - 5 P.C.C. DRIVEWAY PAVEMENT, 200mm
  - 6 P.C.C. DRIVEWAY PAVEMENT, 150mm
  - 7 AGGREGATE BASE COURSE, TYPE B, 200mm
  - 8 INCIDENTAL H.M.A. SURFACING, 75mm
  - 9 INCIDENTAL H.M.A. SURFACING, 40mm
  - 10 SUBBASE GRANULAR MATERIAL, TYPE A, 300mm



- NOTE**
- PROFILES ARE SHOWN ON PROPOSED PROFILE SHEETS.
  - 5m RADIUS IS USED ON ALL COMMERCIAL DRIVEWAYS UNLESS OTHERWISE SHOWN.
  - DRIVEWAY CENTERLINES ARE ORTHOGONAL TO STREET ALIGNMENTS UNLESS OTHERWISE NOTED.

REVISIONS	
NAME	DATE
LCE	4/30/09

ILLINOIS DEPARTMENT OF TRANSPORTATION  
 ILLINOIS ROUTE 8 - SEGMENT 2  
 PROPOSED PLAN  
 STA. 9+225 TO STA. 9+400

SCALE: 1:250  
 DATE: DECEMBER, 2003

DRAWN BY: RLK  
 CHECKED BY: SAE