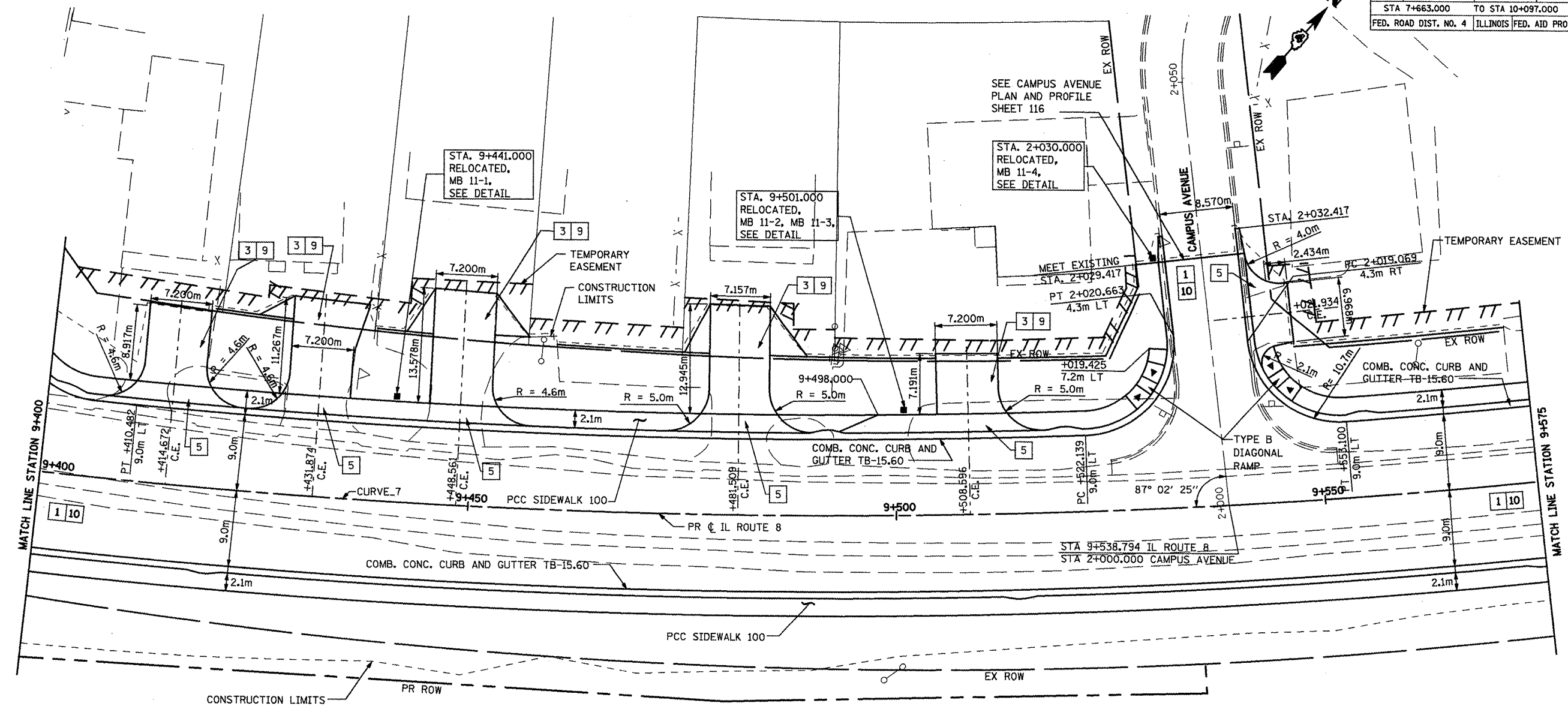


F.A.P. RTE.	SECTION	COUNTY	TOTAL SHEETS	SHEET NO.
399	36R-1,37R-2	TAZEWELL	449	101
STA 7+663.000		TO STA 10+097.000		
FED. ROAD DIST. NO. 4		ILLINOIS FED. AID PROJECT		



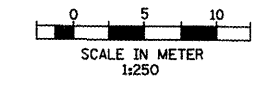
Prop. Curve CURVE\_7  
 PI Sta. 9+463.681  
 $\Delta = 16^\circ 37' 47''$  (LT)  
 T = 120.573 m  
 R = 825.000 m  
 L = 239.451 m  
 E = 8.764 m  
 PC Sta. 9+343.108  
 PT Sta. 9+582.559  
 e =

**KEY**

- 1 P.C.C. PAVEMENT, 250mm (JOINTED)
- 2 H.M.A. BASE COURSE, 200mm
- 3 H.M.A. BASE COURSE, 150mm
- 4 POLY. H.M.A. SURFACE COURSE MIX "D", N50, 40mm
- 5 P.C.C. DRIVEWAY PAVEMENT, 200mm
- 6 P.C.C. DRIVEWAY PAVEMENT, 150mm
- 7 AGGREGATE BASE COURSE, TYPE B, 200mm
- 8 INCIDENTAL H.M.A. SURFACING, 75mm
- 9 INCIDENTAL H.M.A. SURFACING, 40mm
- 10 SUBBASE GRANULAR MATERIAL, TYPE A, 300mm

**NOTE**

- 1. PROFILES ARE SHOWN ON PROPOSED PROFILE SHEETS.
- 2. 5m RADIUS IS USED ON ALL COMMERCIAL DRIVEWAYS UNLESS OTHERWISE SHOWN.
- 3. DRIVEWAY CENTERLINES ARE ORTHOGONAL TO STREET ALIGNMENTS UNLESS OTHERWISE NOTED.



REVISIONS	
NAME	DATE
LCE	4/30/09

ILLINOIS DEPARTMENT OF TRANSPORTATION  
 ILLINOIS ROUTE 8 - SEGMENT 2  
 PROPOSED PLAN  
 STA. 9+400 TO STA. 9+575  
 SCALE: 1:250  
 DATE: DECEMBER, 2003  
 DRAWN BY: RLK  
 CHECKED BY: SAE