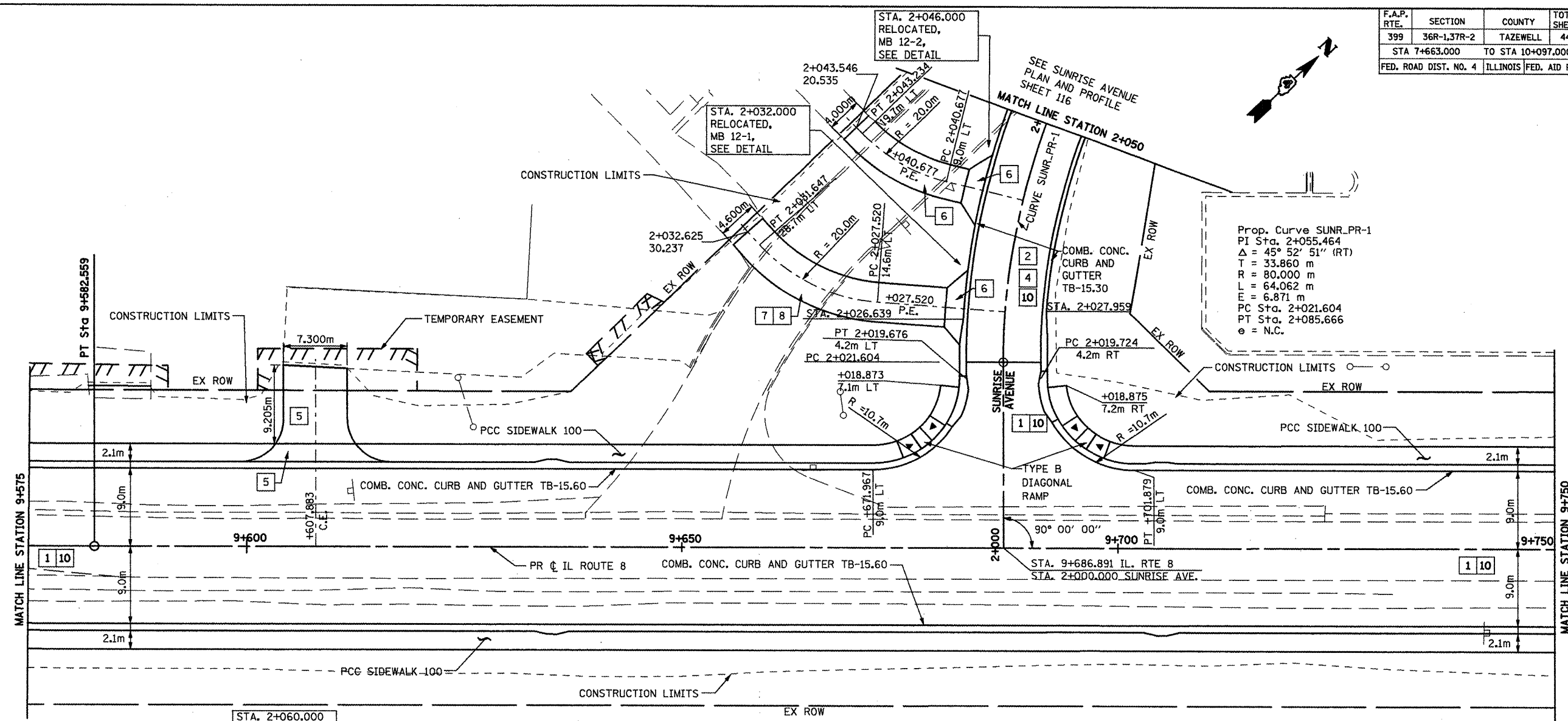
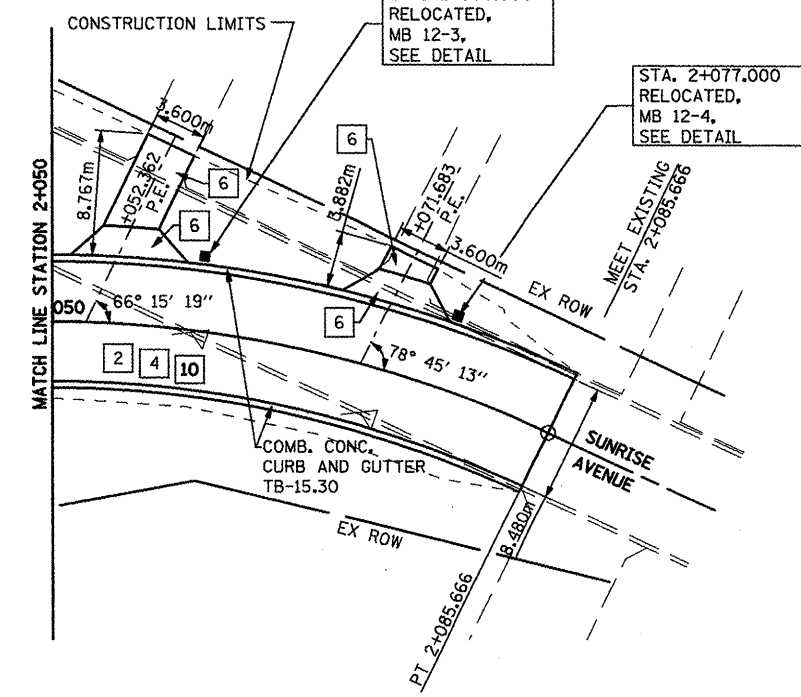


F.A.P. RTE.	SECTION	COUNTY	TOTAL SHEETS	SHEET NO.
399	36R-1,37R-2	TAZEWELL	449	102
STA 7+663.000 TO STA 10+097.000				
FED. ROAD DIST. NO. 4 ILLINOIS FED. AID PROJECT				



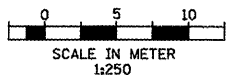
Prop. Curve SUNR\_PR-1  
 PI Sta. 2+055.464  
 $\Delta = 45^\circ 52' 51''$  (RT)  
 T = 33.860 m  
 R = 80.000 m  
 L = 64.062 m  
 E = 6.871 m  
 PC Sta. 2+021.604  
 PT Sta. 2+085.666  
 e = N.C.



- KEY**
- 1 P.C.C. PAVEMENT, 250mm (JOINTED)
  - 2 H.M.A. BASE COURSE, 200mm
  - 3 H.M.A. BASE COURSE, 150mm
  - 4 POLY. H.M.A. SURFACE COURSE MIX "D", N50, 40mm
  - 5 P.C.C. DRIVEWAY PAVEMENT, 200mm
  - 6 P.C.C. DRIVEWAY PAVEMENT, 150mm
  - 7 AGGREGATE BASE COURSE, TYPE B, 200mm
  - 8 INCIDENTAL H.M.A. SURFACING, 75mm
  - 9 INCIDENTAL H.M.A. SURFACING, 40mm
  - 10 SUBBASE GRANULAR MATERIAL, TYPE A, 300mm

- NOTE**
1. PROFILES ARE SHOWN ON PROPOSED PROFILE SHEETS.
  2. 5m RADIUS IS USED ON ALL COMMERCIAL DRIVEWAYS UNLESS OTHERWISE SHOWN.
  3. DRIVEWAY CENTERLINES ARE ORTHOGONAL TO STREET ALIGNMENTS UNLESS OTHERWISE NOTED.

**BENCHMARK**  
 BM #111:  
 CHISELED "X" ON S. SIDE OF  
 TELEPHONE MANHOLE SOUTH  
 SIDE OF WASHINGTON AT  
 SUNRISE AVE.  
 ELEVATION = 205.191



REVISIONS	
NAME	DATE
LCE	4/30/09

**ILLINOIS DEPARTMENT OF TRANSPORTATION**  
**ILLINOIS ROUTE 8 - SEGMENT 2**  
**PROPOSED PLAN**  
**STA. 9+575 TO STA. 9+750**

SCALE: 1:250  
 DATE: DECEMBER, 2003

DRAWN BY: RLK  
 CHECKED BY: SAE