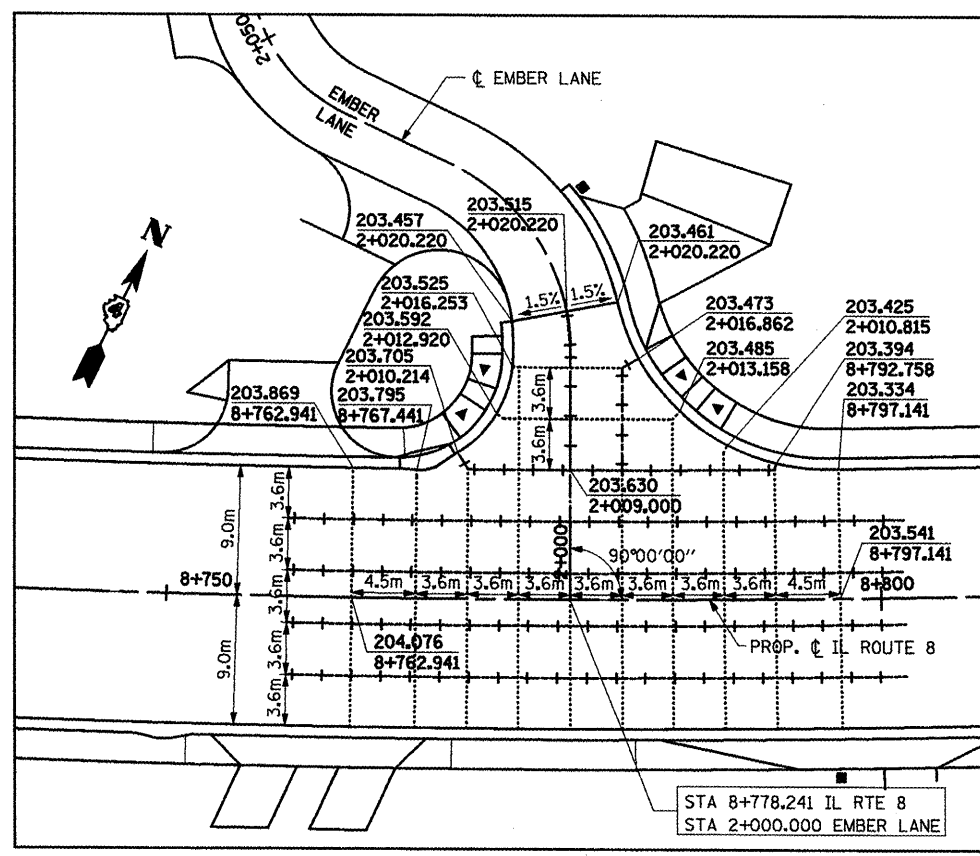
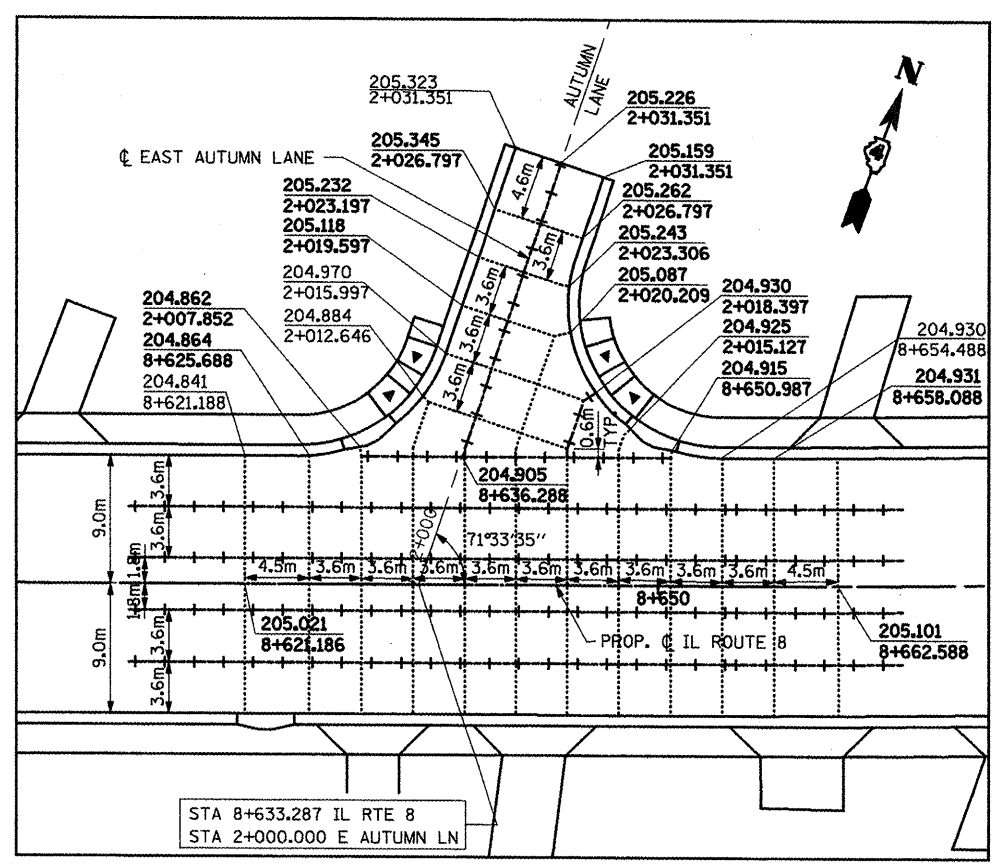
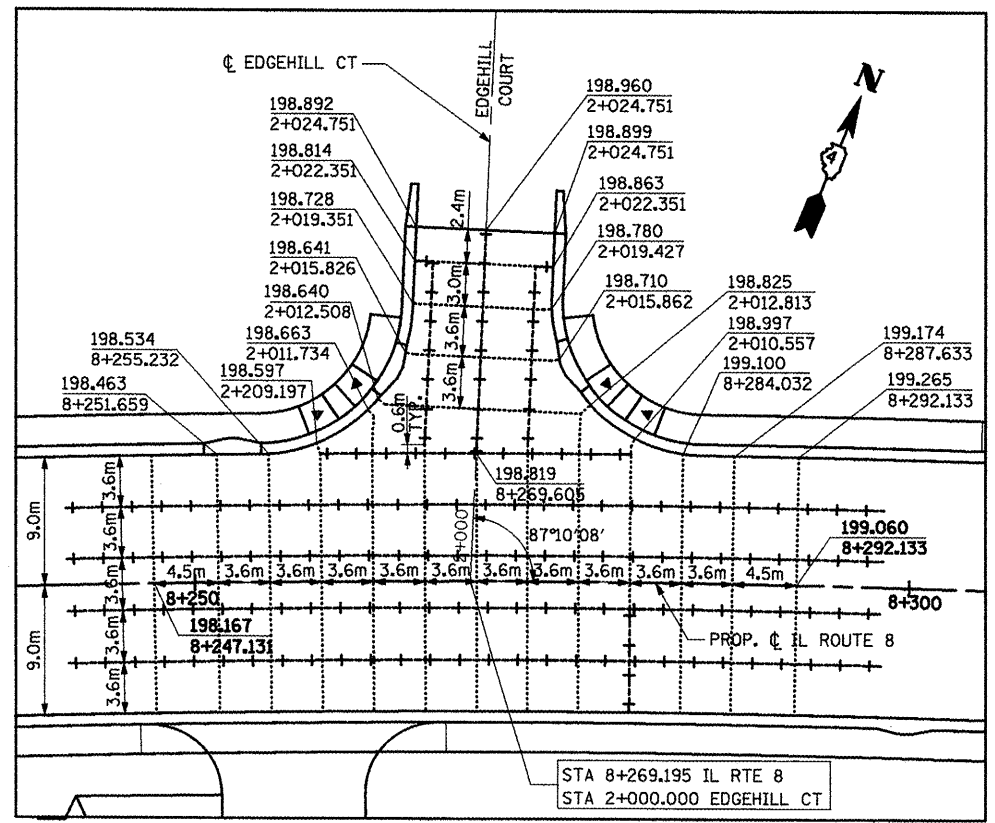


F.A.P. RTE.	SECTION	COUNTY	TOTAL SHEETS	SHEET NO.
399	36R-1 (37R-2)	TAZEWELL	449	119
STA 7+663.000		TO STA 10+097.000		
FED. ROAD DIST. NO. 4		ILLINOIS FED. AID PROJECT		

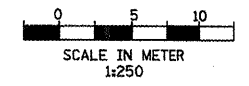


LEGEND:

- SAWED CONTRACTION JOINT
- +++++ CONSTRUCTION JOINT

NOTES:

1. FOR MORE INFO SEE STANDARDS 420001, 420101 AND 606001.
2. ADDITIONAL SAWED CONTRACTION JOINTS MAY BE REQUIRED IN THE FIELD, AS DIRECTED BY THE ENGINEER. EXACT LOCATIONS TO BE VERIFIED IN THE FIELD AND APPROVED BY THE ENGINEER.
3. PAVEMENT BLOCK-OUTS FOR MANHOLES, VALVE VAULTS AND OTHER STRUCTURES SHALL BE CONSTRUCTED IN ACCORDANCE WITH STANDARD 420111.
4. CONSTRUCTION TO VERIFY ELEVATION OF EXISTING PAVEMENT PRIOR TO CONSTRUCTION.



REVISIONS	
NAME	DATE

ILLINOIS DEPARTMENT OF TRANSPORTATION
 ILLINOIS ROUTE 8 - SEGMENT 2
 INTERSECTION DETAIL 2

SCALE: 1:250
 DATE: DECEMBER, 2003

DRAWN BY: RDT
 CHECKED BY: PK