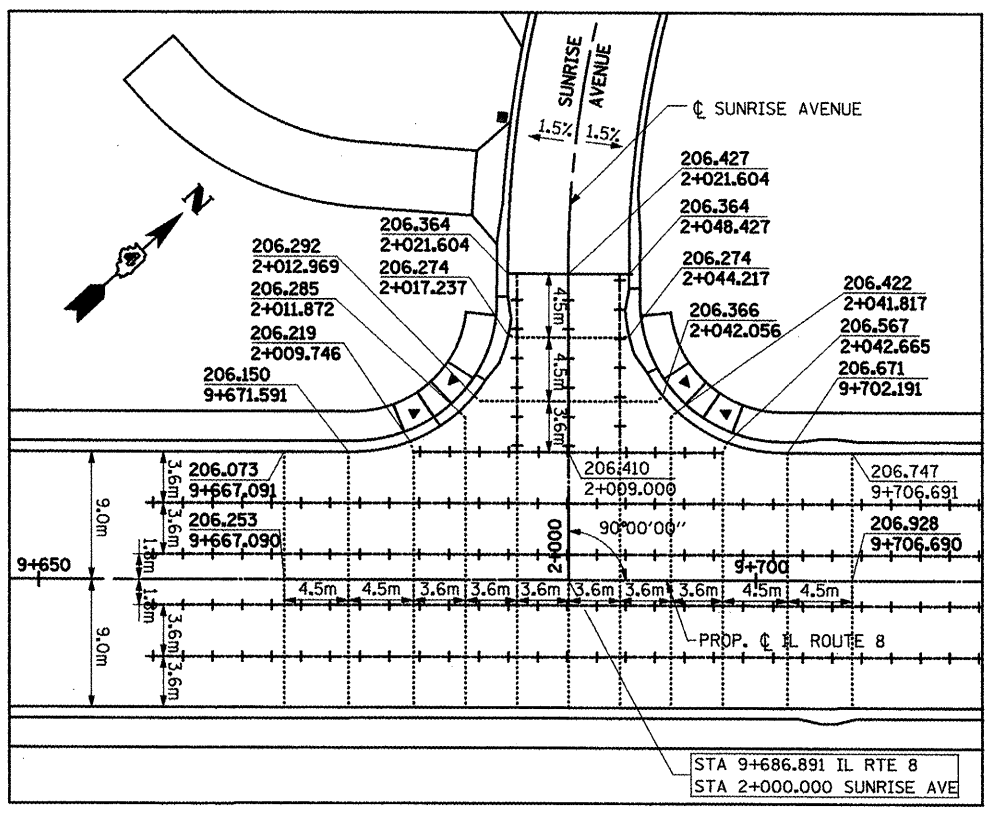
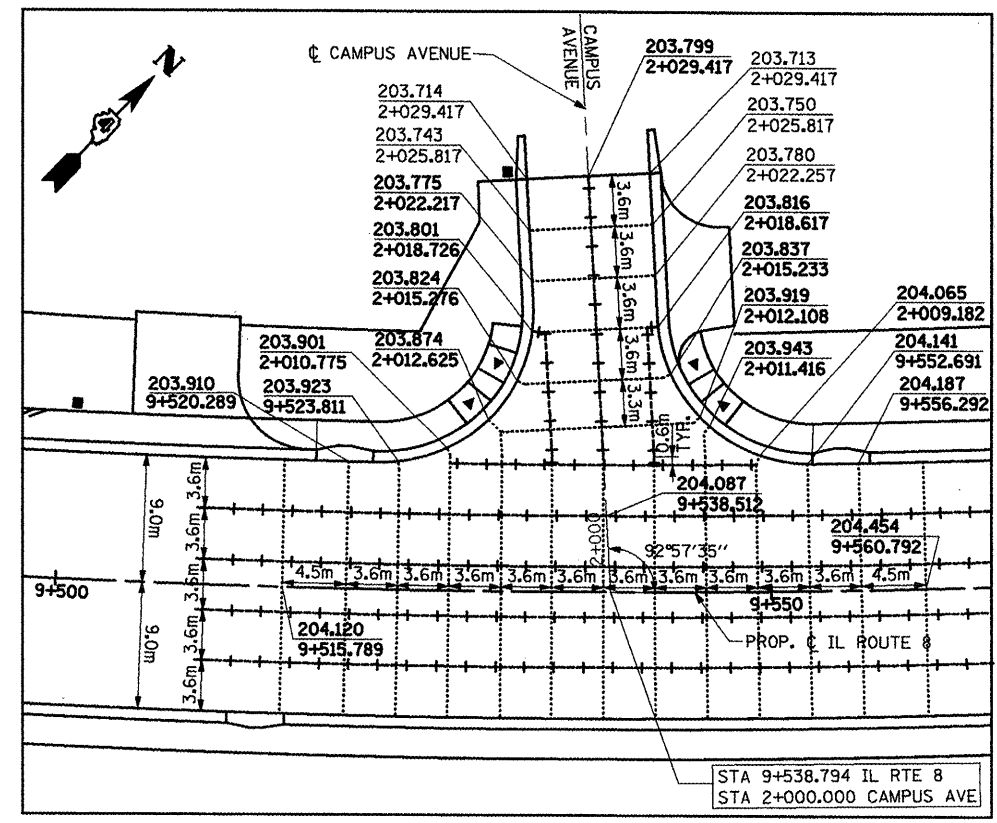
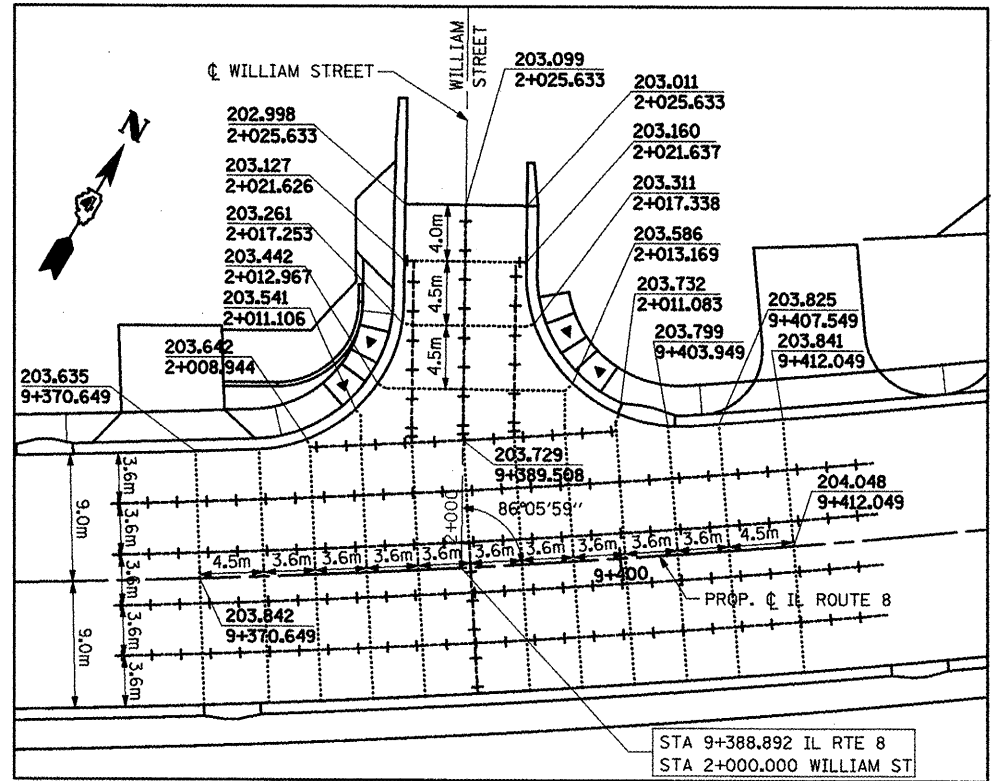


F.A.P. RTE.	SECTION	COUNTY	TOTAL SHEETS	SHEET NO.
399	36R-1, (37R-2)	TAZEWELL	449	121
STA 7+663.000		TO STA 10+097.000		
FED. ROAD DIST. NO. 4		ILLINOIS FED. AID PROJECT		

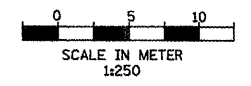


LEGEND:

- SAWED CONTRACTION JOINT
- + + + CONSTRUCTION JOINT

NOTES:

1. FOR MORE INFO SEE STANDARDS 420001, 420101 AND 606001.
2. ADDITIONAL SAWED CONTRACTION JOINTS MAY BE REQUIRED IN THE FIELD, AS DIRECTED BY THE ENGINEER. EXACT LOCATIONS TO BE VERIFIED IN THE FIELD AND APPROVED BY THE ENGINEER.
3. PAVEMENT BLOCK-OUTS FOR MANHOLES, VALVE VAULTS AND OTHER STRUCTURES SHALL BE CONSTRUCTED IN ACCORDANCE WITH STANDARD 420111.
4. CONTRACTOR TO VERIFY ELEVATION OF EXISTING PAVEMENT PRIOR TO CONSTRUCTION.



REVISIONS		ILLINOIS DEPARTMENT OF TRANSPORTATION ILLINOIS ROUTE 8 - SEGMENT 2 INTERSECTION DETAIL 4
NAME	DATE	
		SCALE: 1:250 DATE: DECEMBER, 2003

DRAWN BY: RDT
CHECKED BY: PK