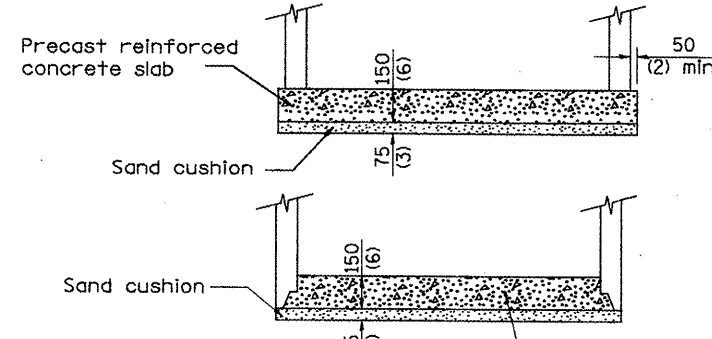
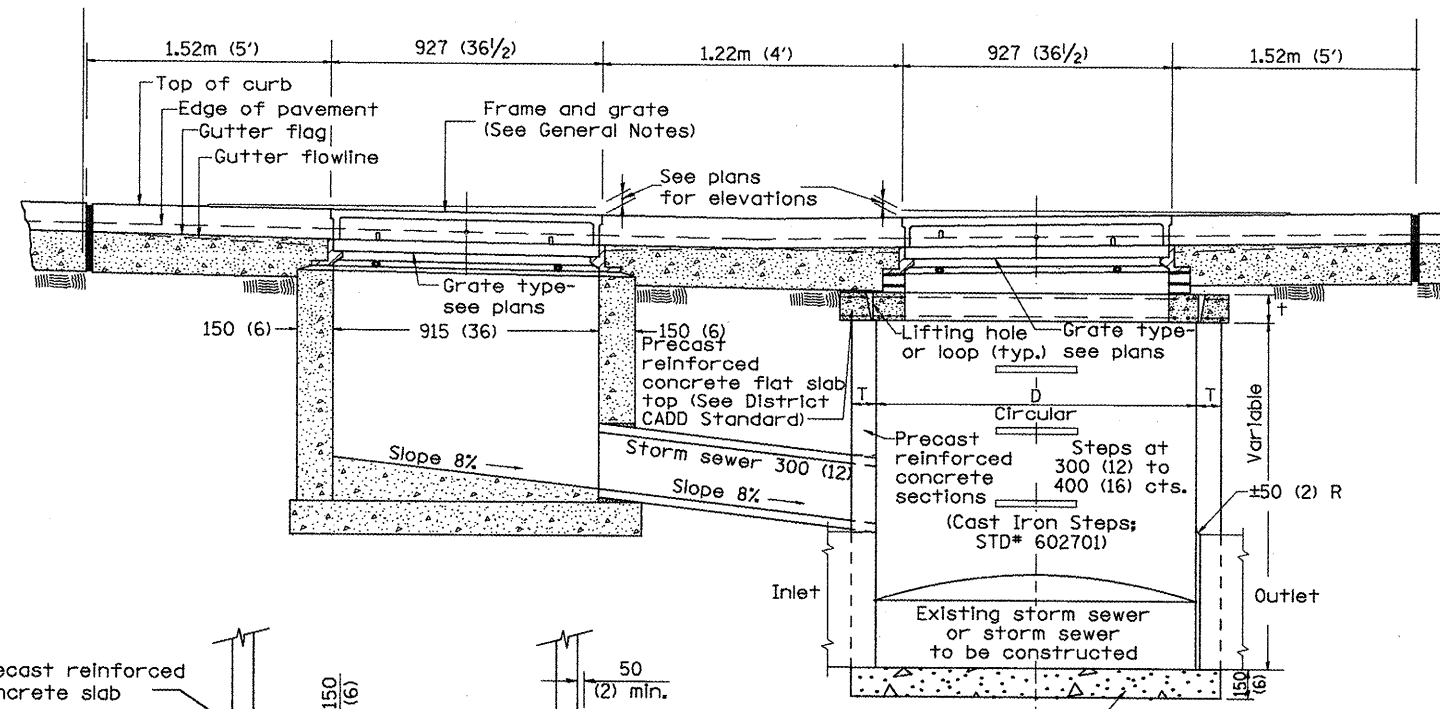
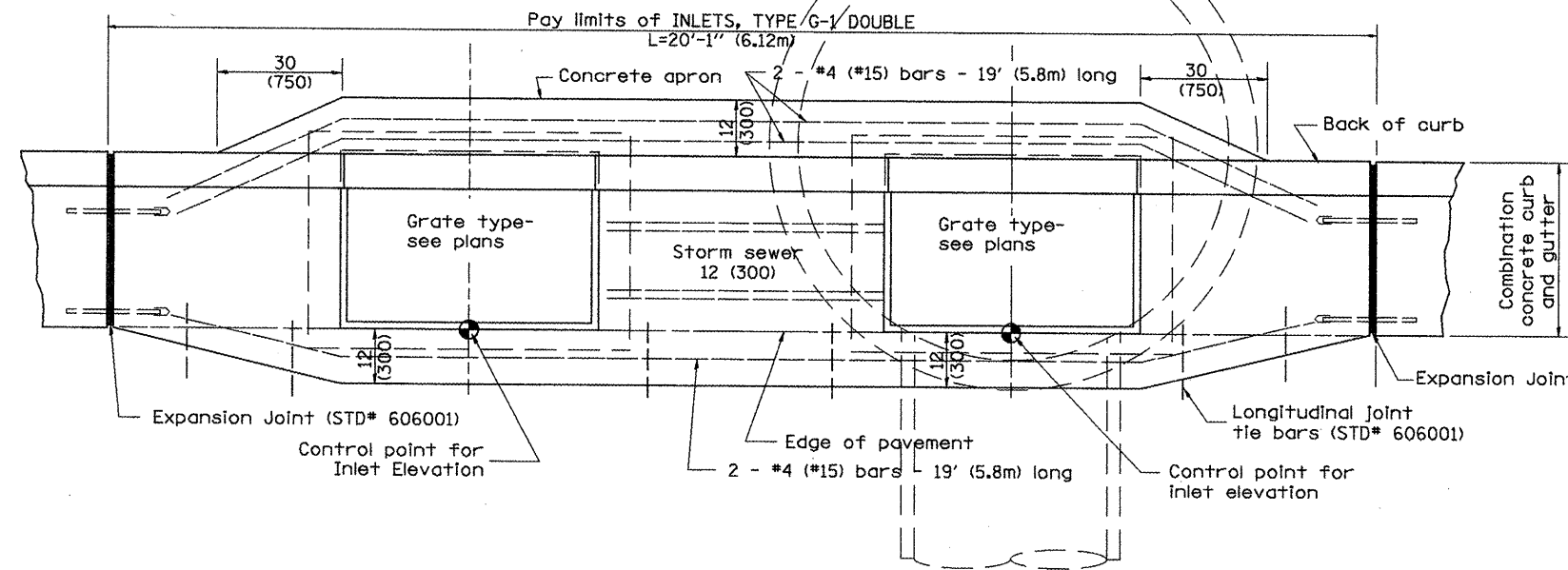


F.A.P. RTE.	SECTION	COUNTY	TOTAL SHEETS	SHEET NO.
399	36R-1,37R-2	TAZEWELL	449	168
STA 7+663.000		TO STA 10+097.000		
FED. ROAD DIST. NO. 4		ILLINOIS FED. AID PROJECT		

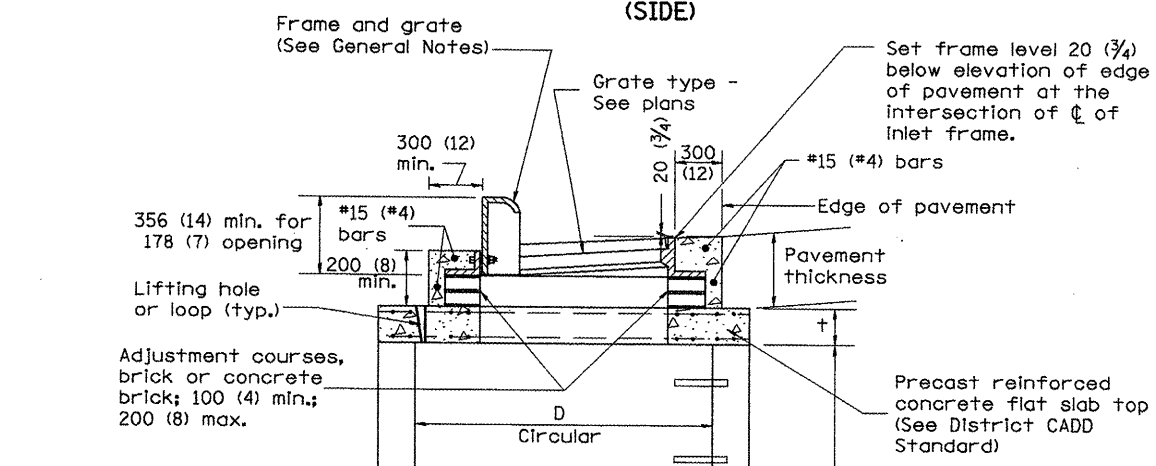
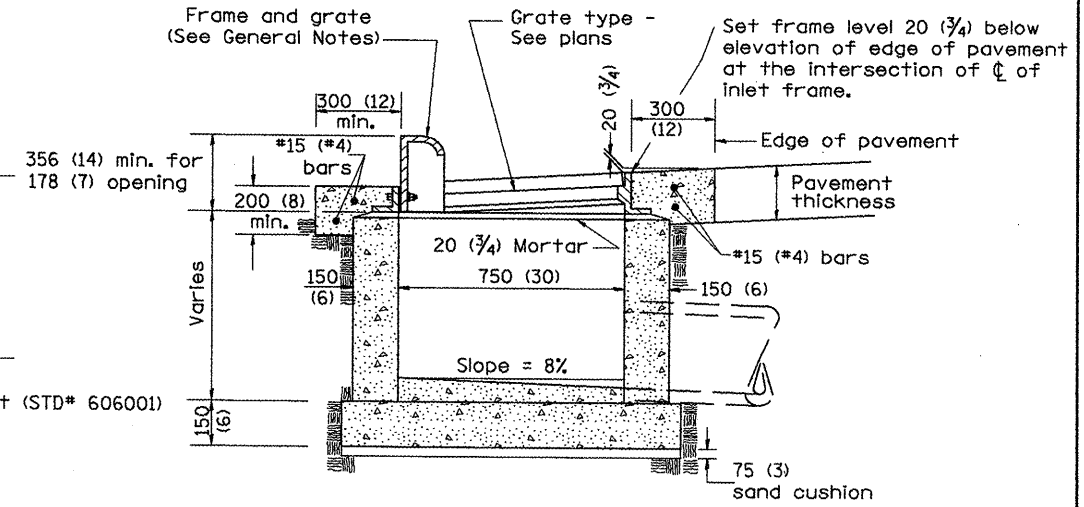


**ALTERNATE BOTTOM SLAB**  
 Prefabricated concrete slab, when the precast reinforced concrete section alternate is used.

**STRUCTURE TABLE**

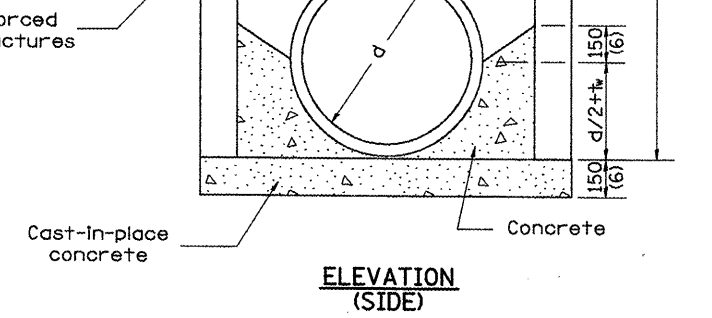
Str #	Inlet	MH 1.2m $\phi$
38		X
38A	X	
147		X
147A	X	

- GENERAL NOTES**
- Inlet construction shall be in accordance with Section 602 of the Standard Specifications.
  - Combination Concrete Curb & Gutter shall be constructed in accordance with Section 606 of the Standard Specifications.
  - See District CADD Standard 604001-D4 for frame and grates.
  - See District CADD Standard for Precast Reinforced Concrete slab top.



**TABLE**

D	T	+
1.2m (4')	125 (5)	150 (6)
1.5m (5')	150 (6)	200 (8)
1.8m (6')	195 (7 3/4)	200 (8)
2.4m (8')	225 (9)	250 (10)



**ELEVATION (SIDE)**

**REVISIONS**

NAME	DATE
LCE	3-6-10

All dimensions are in millimeters (Inches) unless otherwise noted.

ILLINOIS DEPARTMENT OF TRANSPORTATION  
 ILLINOIS ROUTE 8 - SEGMENT 2  
 INLET-MANHOLE, TYPE G-1,  
 1.2M DIAMETER, DOUBLE

SCALE: N.T.S. DRAWN BY: RLK  
 DATE: DECEMBER, 2003 CHECKED BY: SE