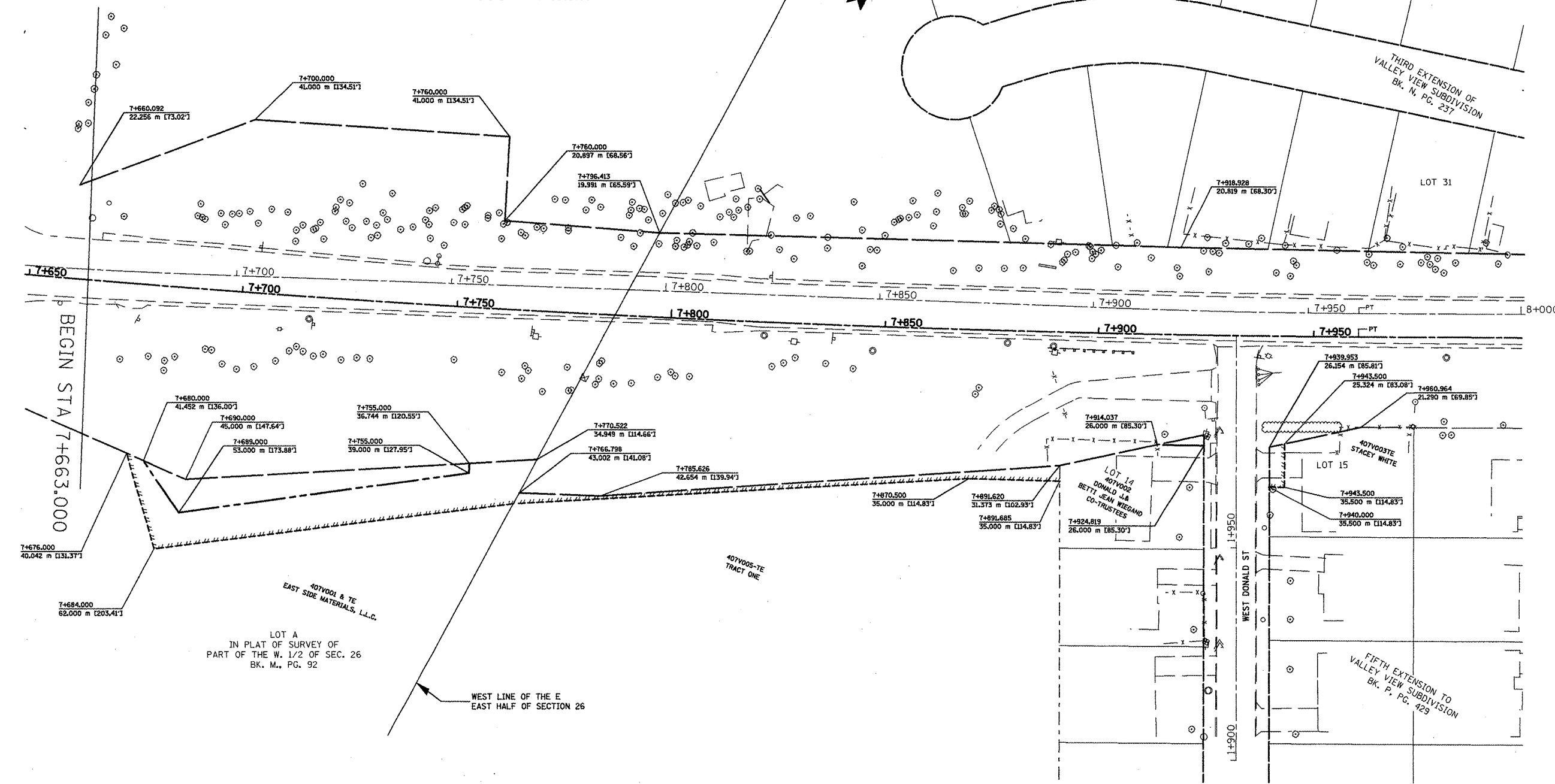
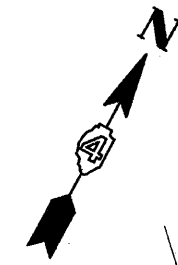


F.A.P. RTE.	SECTION	COUNTY	TOTAL SHEETS	SHEET NO.
399	36R-L (37R-2)	TAZEWELL	449	191
STA 7+663,000		TO STA 10+097,000		
FED. ROAD DIST. NO. 4		ILLINOIS FED. AID PROJECT		

EXISTING CENTERLINE	---
PROPOSED CENTERLINE	---
EXISTING RIGHT OF WAY LINE	---
PROPOSED RIGHT OF WAY LINE	---
PERMANENT EASEMENT LINE	---
TEMPORARY EASEMENT LINE	---

FAP 399 (IL8) C1  
 PI STA = 7+934.088  
 $\Delta = 1^{\circ} 48' 53''$  (LT)  
 R = 1,746.225 m  
 T = 27.657 m  
 L = 55.310 m  
 E = 0.219 m  
 P.C. STA = 7+906.430  
 P.T. STA = 7+961.740

FAP 399 (IL8) C2  
 PI STA = 7+692.397  
 $\Delta = 8^{\circ} 20' 40''$  (LT)  
 R = 3,686.998 m  
 T = 268.957 m  
 L = 536.962 m  
 E = 9.797 m  
 P.C. STA = 7+423.441  
 P.T. STA = 7+960.403



REVISIONS	
NAME	DATE
LCE	1-13-10

ILLINOIS DEPARTMENT OF TRANSPORTATION  
 ILLINOIS ROUTE 8 - SEGMENT 2  
 PERMANENT EASEMENT, TEMPORARY  
 EASEMENTS, RIGHT-OF-WAY  
 STA. 7+663 TO STA. 8+000  
 SCALE: 1:500  
 DATE: OCTOBER, 2009  
 DRAWN BY: MLA  
 CHECKED BY: PCF

FOR OLD R.O.W. SEE  
 PLAN 4 SHEETS 10 & 10N Plotfile: 533