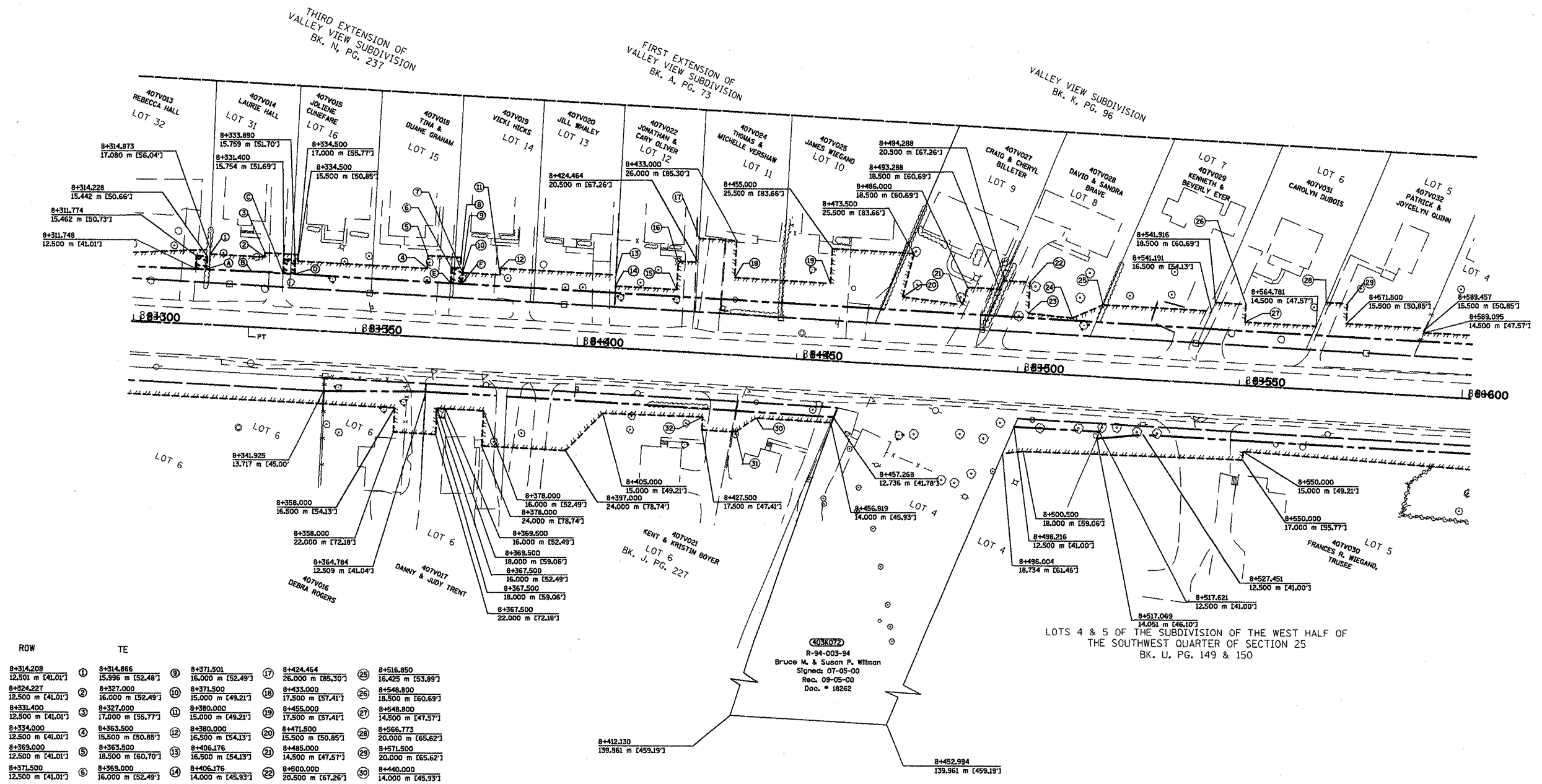


F.A.P. RTE.	SECTION	COUNTY	TOTAL SHEETS	SHEET NO.
399	36R-1, (37R-2)	TAZEWELL	449	193
STA 7+663.000		TO STA 10+097.000		
FED. ROAD DIST. NO. 4		ILLINOIS FED. AID PROJECT		

EXISTING CENTERLINE	-----
PROPOSED CENTERLINE	-----
EXISTING RIGHT OF WAY LINE	-----
PROPOSED RIGHT OF WAY LINE	-----
PERMANENT EASEMENT LINE	-----
TEMPORARY EASEMENT LINE	-----

FAP 399 (IL8) C4  
 PI STA = 8+239.297  
 $\Delta = 8^\circ 22' 33''$  (RT)  
 R = 1,164.005 m  
 T = 85.234 m  
 L = 170.164 m  
 E = 3.116 m  
 P.C. STA = 8+154.063  
 P.T. STA = 8+324.227



ROW	TE						
Ⓐ	8+314.208 12.501 m [41.01']	Ⓚ	8+314.866 15.996 m [52.48']	Ⓜ	8+371.501 16.000 m [52.49']	Ⓠ	8+424.464 26.000 m [85.30']
Ⓑ	8+324.227 12.500 m [41.01']	Ⓛ	8+327.000 16.000 m [52.49']	Ⓝ	8+371.500 15.000 m [49.21']	Ⓡ	8+458.800 17.500 m [57.41']
Ⓒ	8+331.400 12.500 m [41.01']	Ⓜ	8+327.000 17.000 m [55.77']	Ⓞ	8+380.000 15.000 m [49.21']	Ⓢ	8+485.800 17.500 m [57.41']
Ⓓ	8+334.000 12.500 m [41.01']	Ⓨ	8+334.500 15.500 m [50.85']	Ⓟ	8+380.000 16.500 m [54.13']	Ⓣ	8+471.500 15.500 m [50.85']
Ⓔ	8+363.000 12.500 m [41.01']	Ⓩ	8+363.500 18.500 m [60.70']	Ⓠ	8+406.176 16.500 m [54.13']	Ⓤ	8+485.000 14.500 m [47.57']
Ⓕ	8+371.500 12.500 m [41.01']	ⓐ	8+369.000 16.000 m [52.49']	Ⓡ	8+406.176 14.000 m [45.93']	Ⓡ	8+500.000 20.500 m [67.26']
		ⓑ	8+371.000 16.000 m [52.49']	Ⓢ	8+420.000 14.000 m [45.93']	Ⓚ	8+500.000 13.500 m [44.29']
		Ⓒ	8+371.000 18.500 m [60.70']	Ⓣ	8+420.000 20.500 m [67.26']	Ⓛ	8+510.000 13.000 m [42.65']

REVISIONS	
NAME	DATE
LCE	1-13-10

ILLINOIS DEPARTMENT OF TRANSPORTATION  
 ILLINOIS ROUTE 8 - SEGMENT 2  
 PERMANENT EASEMENT, TEMPORARY EASEMENTS, RIGHT-OF-WAY  
 STA. 8+300 TO STA. 8+600  
 SCALE: 1:500  
 DATE: OCTOBER, 2009  
 DRAWN BY: MLA  
 CHECKED BY: PCF

FOR OLD R.O.W. SEE  
 PLAN 4 SHEETS 10

Plotfile: 533