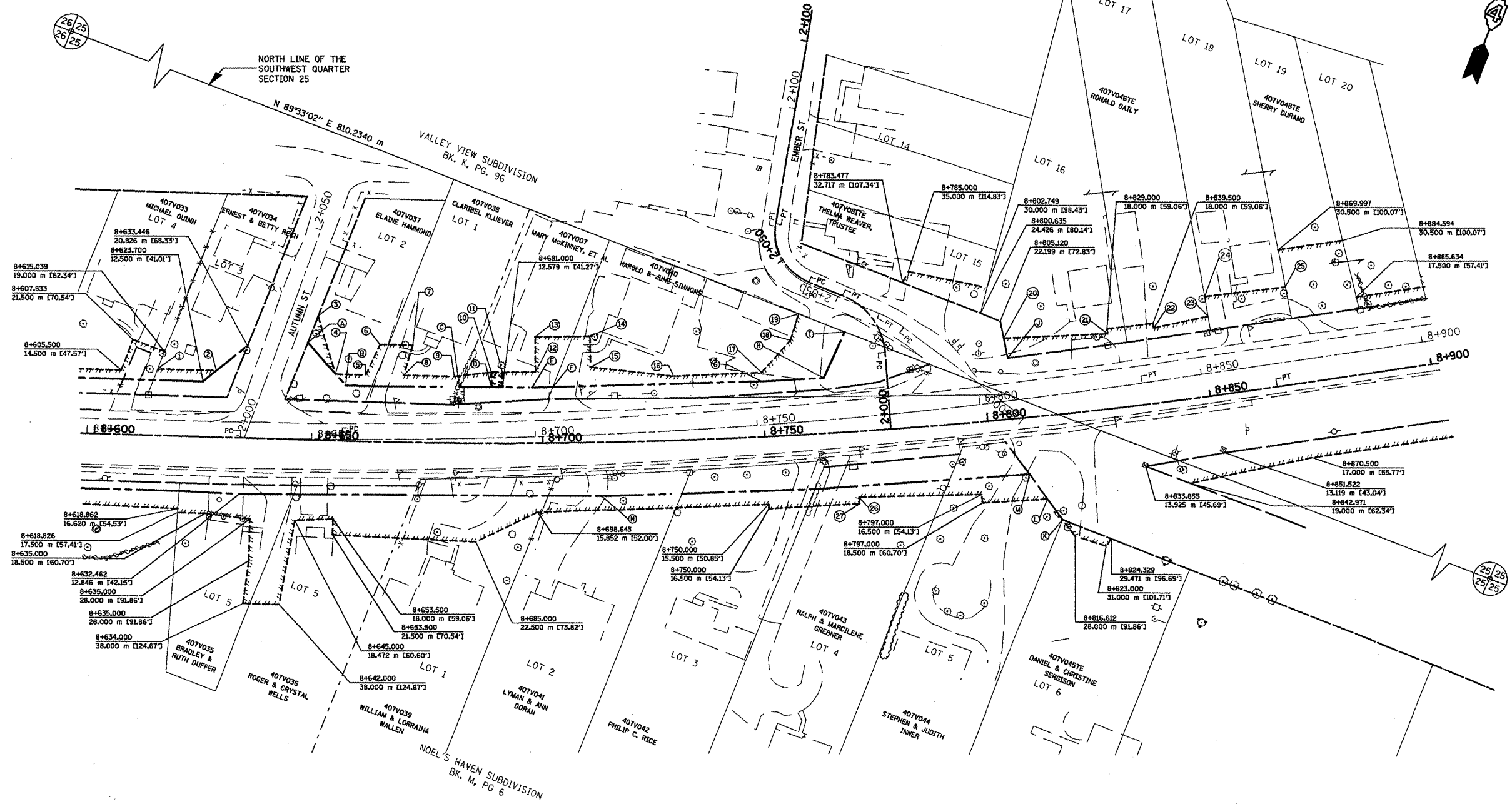


F.A.P. RTE.	SECTION	COUNTY	TOTAL SHEETS	SHEET NO.
399	36R-1, (37R-2)	TAZEWELL	449	194
STA 7+663.000 TO STA 10+097.000				
FED. ROAD DIST. NO. 4 ILLINOIS FED. AID PROJECT				

ROW		TE	
Ⓐ 8+646.839 22,000 m [72.18']	Ⓜ 8+764.000 12,500 m [41.01']	① 8+613.591 15,000 m [49.21']	⑮ 8+711.000 17,000 m [55.77']
Ⓑ 8+655.500 12,500 m [41.01']	Ⓝ 8+769.500 22,630 m [74.25']	② 8+626.627 15,000 m [49.21']	⑯ 8+730.000 14,500 m [47.57']
Ⓒ 8+681.202 12,634 m [41.45']	Ⓟ 8+805.939 13,734 m [45.06']	③ 8+649.012 28,000 m [91.86']	⑰ 8+750.000 14,500 m [47.57']
Ⓓ 8+688.500 12,601 m [41.34']	Ⓡ 8+814.226 24,015 m [78.79']	④ 8+653.217 15,000 m [49.21']	⑱ 8+757.000 21,500 m [70.54']
Ⓔ 8+697.671 12,495 m [40.99']	Ⓣ 8+811.442 13,000 m [42.34']	⑤ 8+660.000 15,000 m [49.21']	⑲ 8+759.200 21,300 m [69.57']
Ⓕ 8+702.420 12,530 m [41.31']	Ⓤ 8+809.028 12,917 m [42.38']	⑥ 8+665.000 22,000 m [72.18']	⑳ 8+868.500 24,000 m [78.74']
Ⓖ 8+750.000 12,500 m [41.01']	Ⓨ 8+712.880 12,331 m [40.46']	⑦ 8+670.500 22,000 m [72.18']	㉑ 8+870.999 24,000 m [78.74']
		⑧ 8+678.500 15,121 m [49.61']	㉒ 8+876.500 16,976 m [55.70']
		⑨ 8+680.000 15,000 m [49.21']	㉓ 8+882.071 17,969 m [58.95']
		⑩ 8+688.500 16,000 m [52.49']	㉔ 8+881.916 22,511 m [73.85']
		⑪ 8+691.000 16,000 m [52.49']	㉕ 8+870.333 22,021 m [72.25']
		⑫ 8+698.500 16,000 m [52.49']	㉖ 8+770.000 15,000 m [49.21']
		⑬ 8+699.500 16,000 m [52.49']	㉗ 8+770.000 16,500 m [54.13']
		⑭ 8+710.999 24,000 m [78.74']	

FAP 399 (IL8) C5
 PI STA = 8+735.653
 $\Delta = 9^\circ 57' 59''$ (LT)
 R = 1,164.250 m
 T = 101.513 m
 L = 202.515 m
 E = 4.417 m
 P.C. STA = 8+634.140
 P.T. STA = 8+836.655

FAP 399 (IL8) C6
 PI STA = 8+760.349
 $\Delta = 10^\circ 13' 46''$ (LT)
 R = 1,177.001 m
 T = 105.350 m
 L = 210.140 m
 E = 4.705 m
 P.C. STA = 8+655.000
 P.T. STA = 8+865.139



EXISTING CENTERLINE	---
PROPOSED CENTERLINE	---
EXISTING RIGHT OF WAY LINE	---
PROPOSED RIGHT OF WAY LINE	---
PERMANENT EASEMENT LINE	---
TEMPORARY EASEMENT LINE	---

REVISIONS	
NAME	DATE
LCE	1-13-10

ILLINOIS DEPARTMENT OF TRANSPORTATION
 ILLINOIS ROUTE 8 - SEGMENT 2
 PERMANENT EASEMENT, TEMPORARY
 EASEMENTS, RIGHT-OF-WAY
 STA. 8+600 TO STA. 8+900

SCALE: 1:500
 DATE: OCTOBER, 2009

DRAWN BY: MLA
 CHECKED BY: PCF

FOR OLD R.O.W. SEE
 PLAN 4 SHEETS 10 & 13

Plotfile: 533