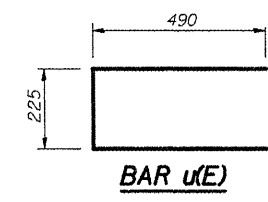
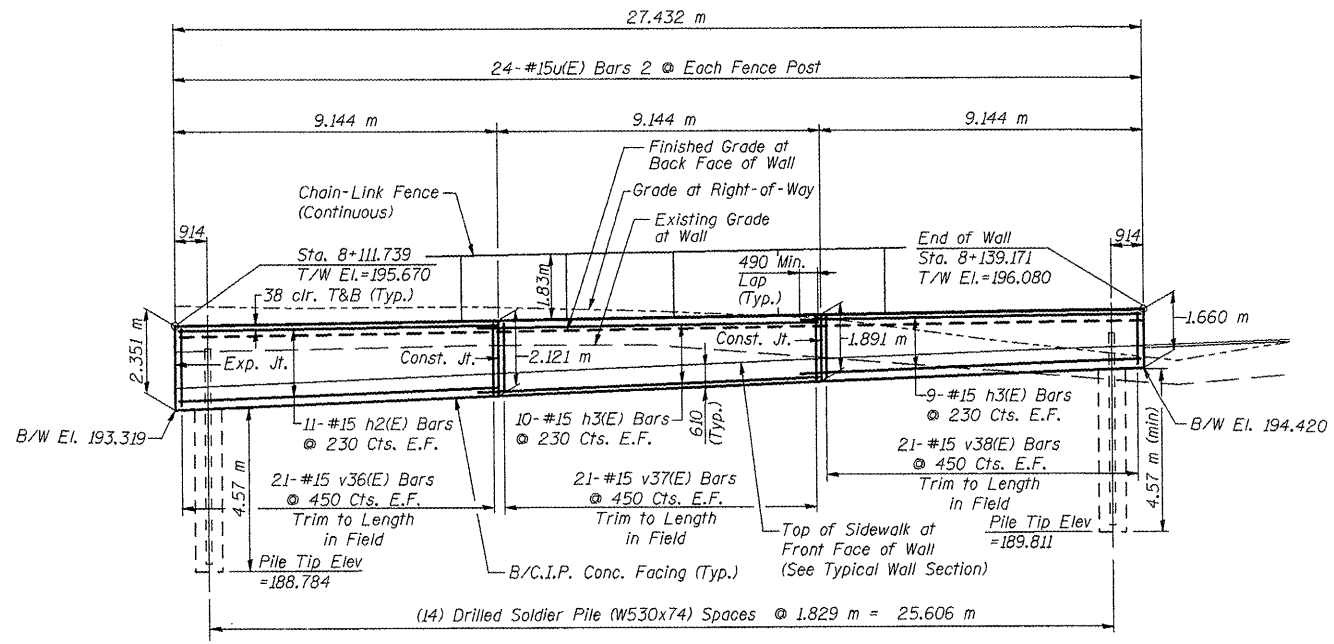
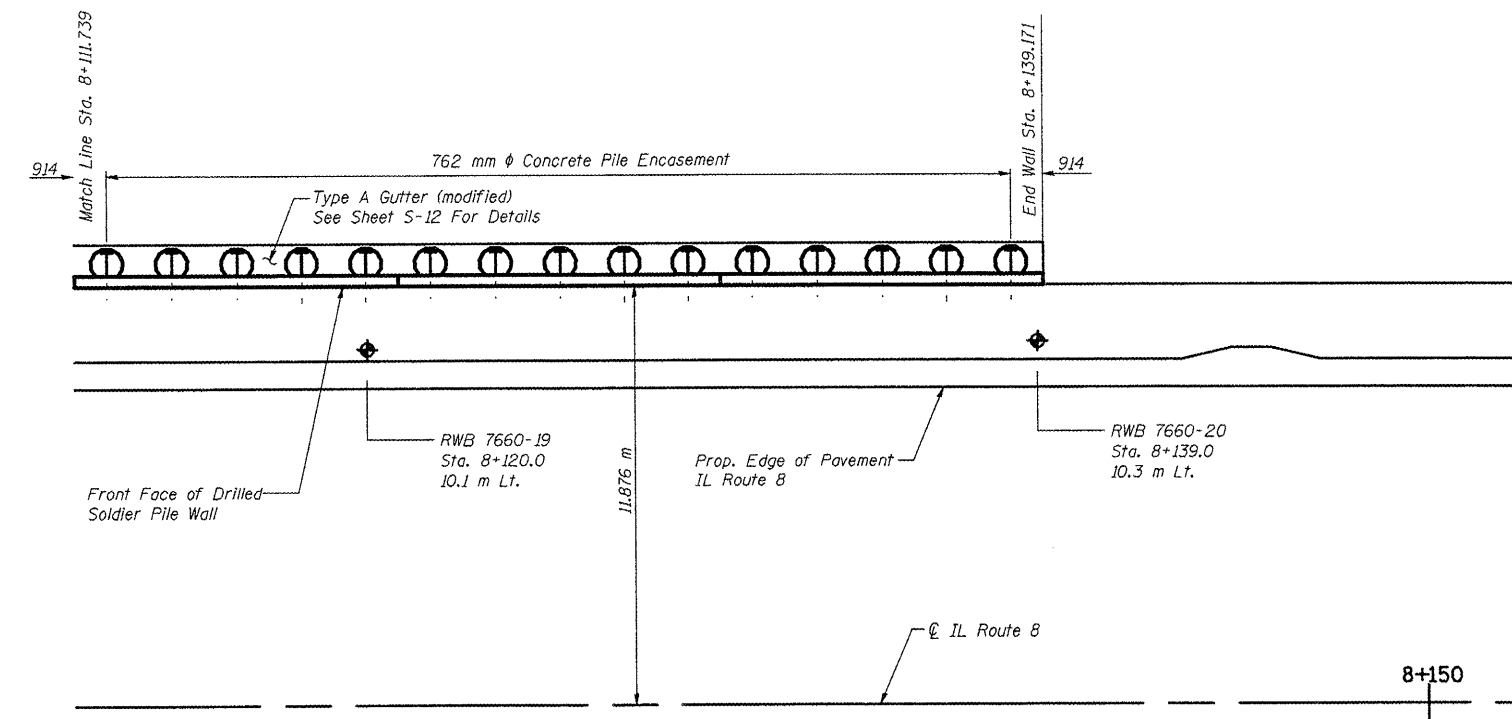


F.A.P. RTE.	SECTION	COUNTY	TOTAL SHEETS	SHEET NO.
399	36R-1,37R-2	TAZEWELL	449	208
STA 7+663.000		TO STA 10+011.000		
FED. ROAD DIST. NO. 4		ILLINOIS FED. AID PROJECT		
Contract No. 88859 SHT. S-11 of S-35				



**BILL OF MATERIAL**

Bar	No.	Size	Length	Shape
h1(E)	18	15	4.800	▬
h2(E)	536	15	9.060	▬
h3(E)	1,010	15	9.630	▬
v1(E)	20	15	1.760	▬
v2(E)	22	15	2.660	▬
v3(E)	84	15	2.820	▬
v4(E)	42	15	2.980	▬
v5(E)	84	15	3.140	▬
v6(E)	42	15	3.300	▬
v7(E)	42	15	3.460	▬
v8(E)	42	15	3.620	▬
v9(E)	42	15	3.680	▬
v10(E)	84	15	3.750	▬
v11(E)	42	15	3.810	▬
v12(E)	42	15	3.880	▬
v13(E)	42	15	3.940	▬
v14(E)	42	15	4.000	▬
v15(E)	84	15	4.060	▬
v16(E)	42	15	4.120	▬
v17(E)	42	15	4.180	▬
v18(E)	42	15	4.240	▬
v19(E)	42	15	4.310	▬
v20(E)	42	15	4.370	▬
v21(E)	84	15	4.430	▬
v22(E)	42	15	4.500	▬
v23(E)	42	15	4.560	▬
v24(E)	42	15	4.620	▬
v25(E)	42	15	4.680	▬
v26(E)	42	15	4.740	▬
v27(E)	42	15	4.810	▬
v28(E)	42	15	4.870	▬
v29(E)	42	15	4.930	▬
v30(E)	42	15	4.990	▬
v31(E)	42	15	5.050	▬
v32(E)	84	15	5.110	▬
v33(E)	42	15	4.780	▬
v34(E)	42	15	3.420	▬
v35(E)	42	15	2.550	▬
v36(E)	42	15	2.270	▬
v37(E)	42	15	2.040	▬
v38(E)	42	15	1.810	▬
u(E)	348	15	1.210	▬
Reinforcement Bars, Epoxy Coated			Kg	34,730
Concrete Structures			Cu. M.	466.5



**Notes:** All Dimensions Are In Millimeters Unless Otherwise Noted.

See Sheet S-10 For Continuation Of Wall.

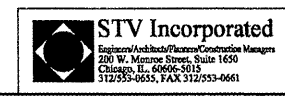
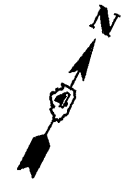
See Sheets S-12 & S-13 For Typical Wall Sections and Details.

See Sheet S-14 For Fence Details.

E.F. = Each Face

T&B = Top & Bottom

B/W = Bottom of Wall



REVISIONS	
NAME	DATE
LCE	2-26-10

ILLINOIS DEPARTMENT OF TRANSPORTATION  
ILLINOIS ROUTE 8 - SEGMENT 2  
S.N 090-8516  
FAP 399 SECTION 36R-1, 37R-2  
TAZEWELL COUNTY  
SOLDIER PILE WALL PLAN AND ELEVATION  
STA. 8+111 to STA. 8+139

DESIGNED BY: J.NEU      DRAWN BY: K.MILLER  
DATE: 2-05      CHECKED BY: A.HALL      CHECKED BY: J.NEU