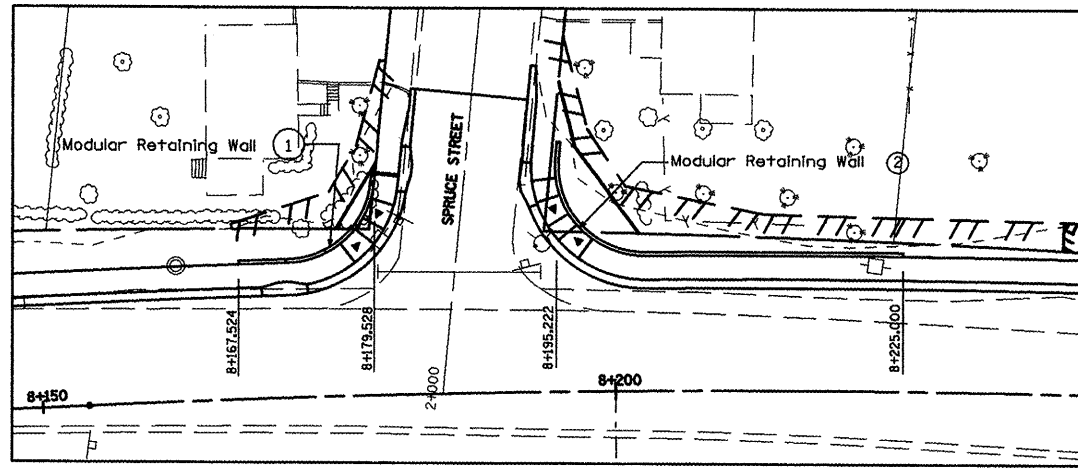
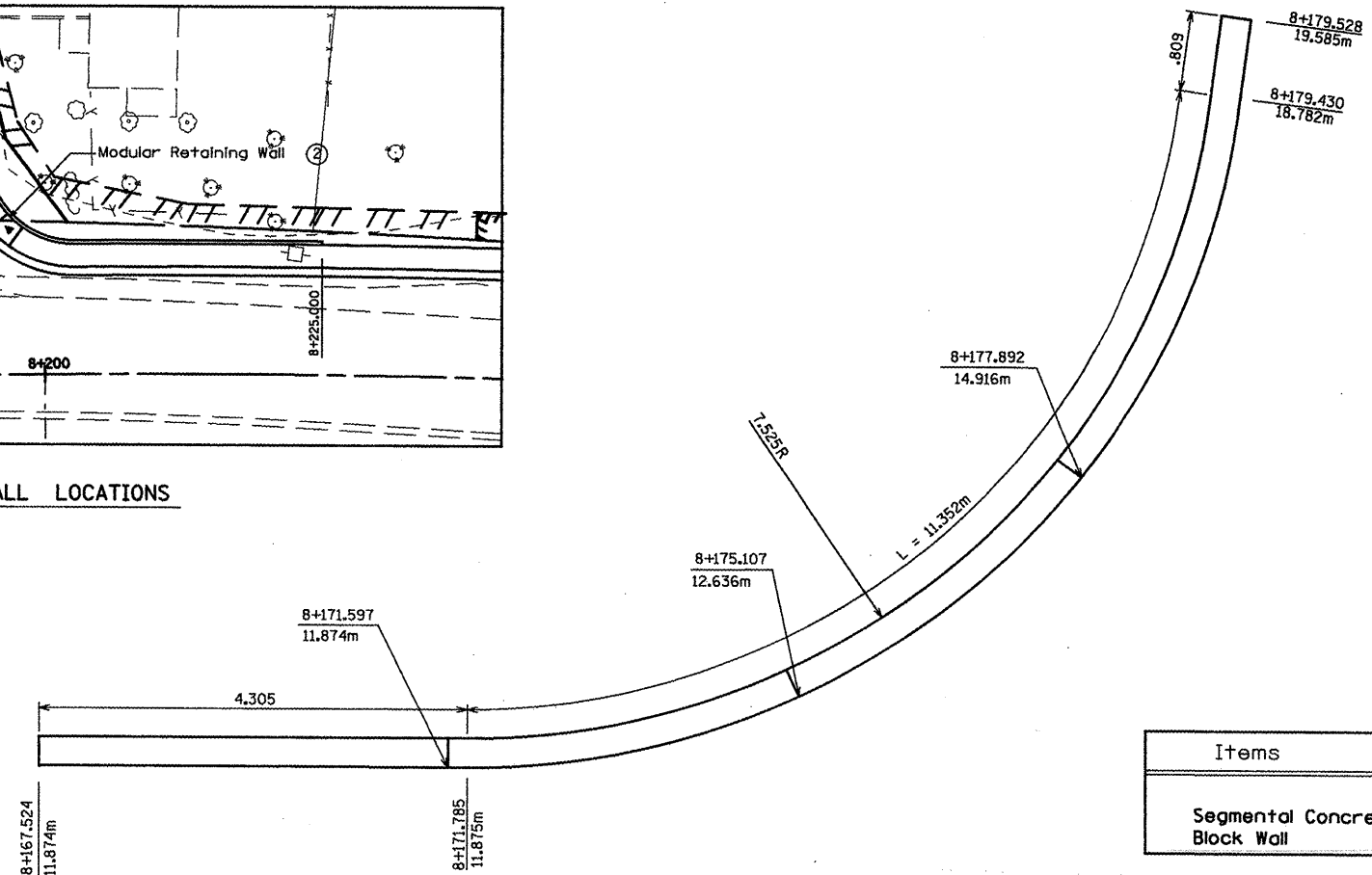


F.A.P. RTE.	SECTION	COUNTY	TOTAL SHEETS	SHEET NO.
399	36R-1, (37R-2)	TAZEWELL	449	236
STA 7+663,000		TO STA 10+097,000		
FED. ROAD DIST. NO. 4		ILLINOIS FED. AID PROJECT		



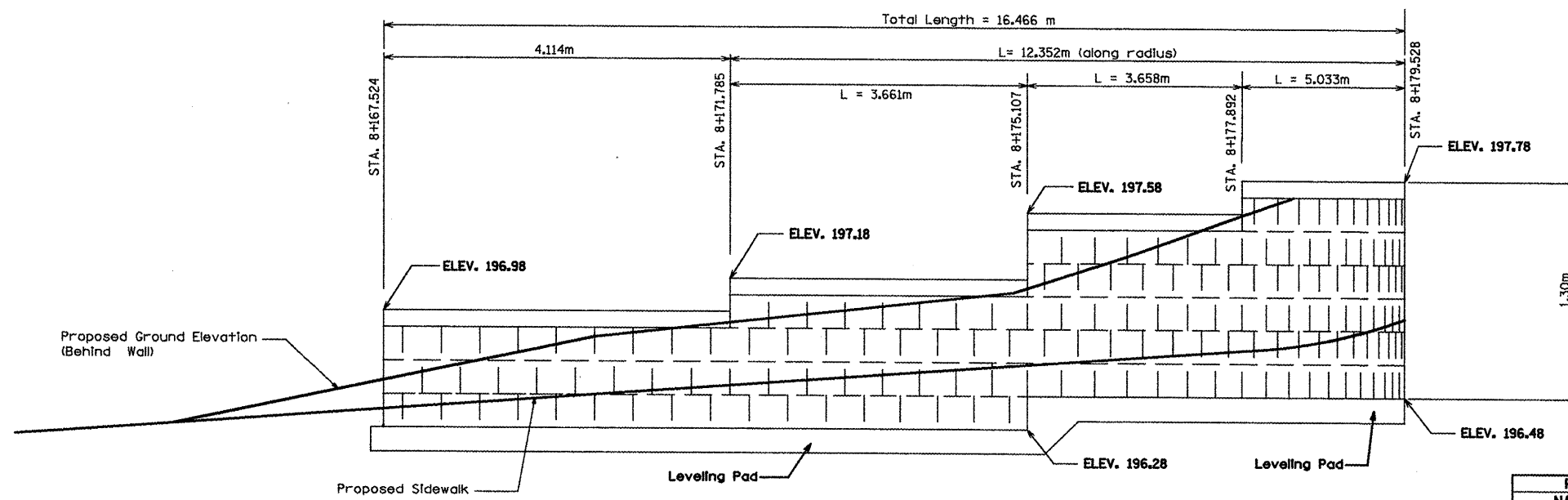
MODULAR RETAINING WALL LOCATIONS



Lt. Sta. 8+167.524 to 8+179.528  
PLAN VIEW  
(Modular Retaining Wall ①)

BILL OF MATERIALS  
Modular Retaining Wall ①

Items	Unit	Quantity
Segmental Concrete Block Wall	SQ. M.	16.741



Lt. Sta. 8+167.524 to 8+179.528  
ELEVATION  
(Modular Retaining Wall ①)

REVISIONS	
NAME	DATE

ILLINOIS DEPARTMENT OF TRANSPORTATION  
ILLINOIS ROUTE 8 - SEGMENT 2  
MODULAR RETAINING WALL  
SYSTEM DETAILS  
LOCATION # 1  
SCALE: NTS  
DATE: NOVEMBER, 2009  
DRAWN BY: LCE  
CHECKED BY: ENE