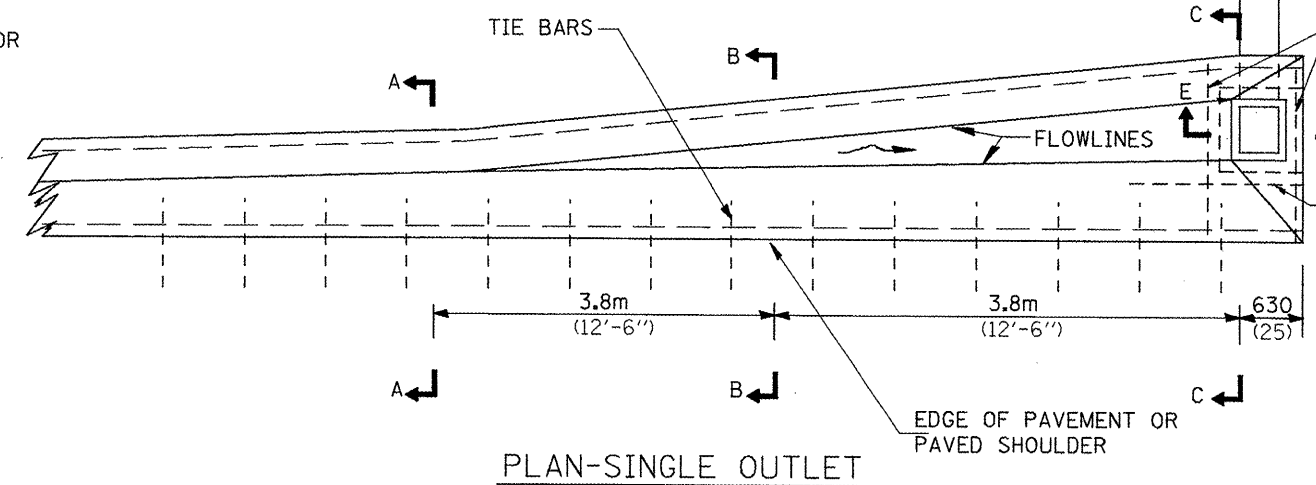
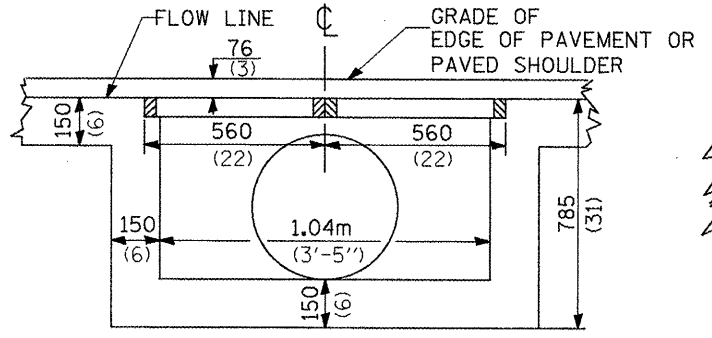
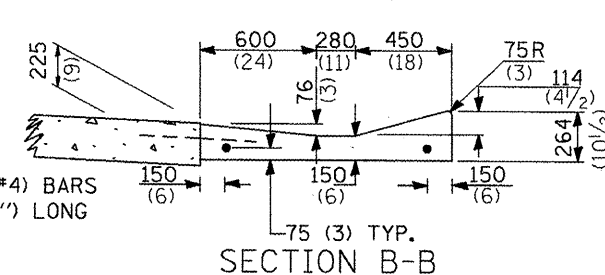
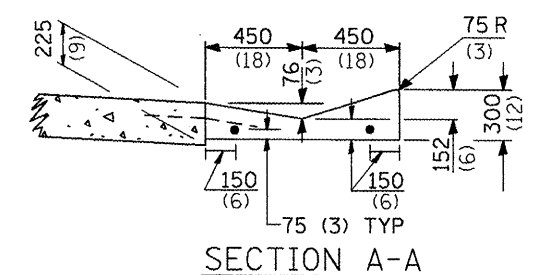
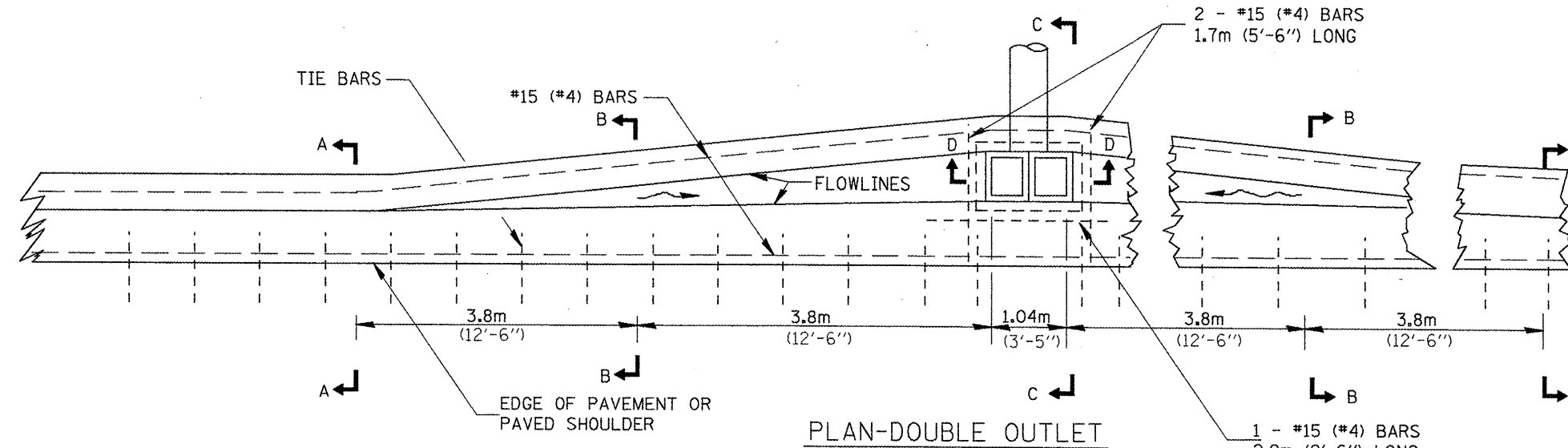
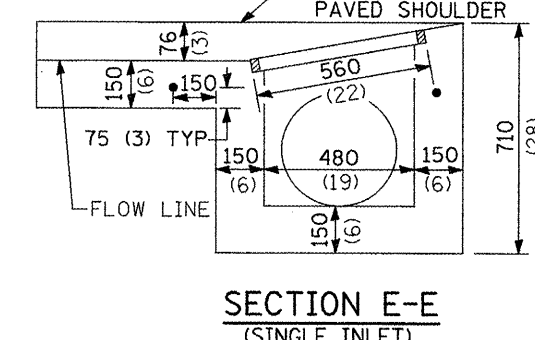
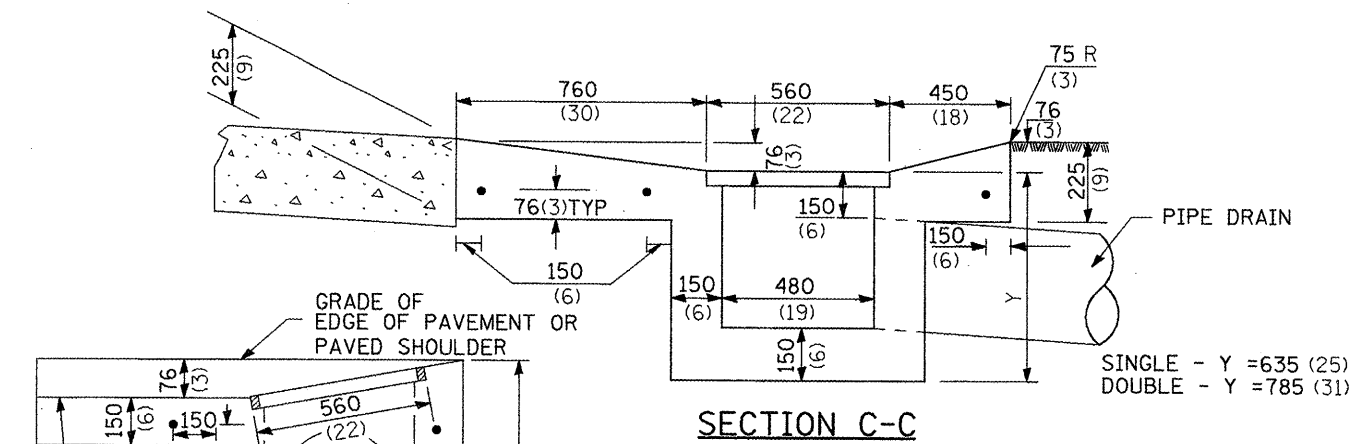
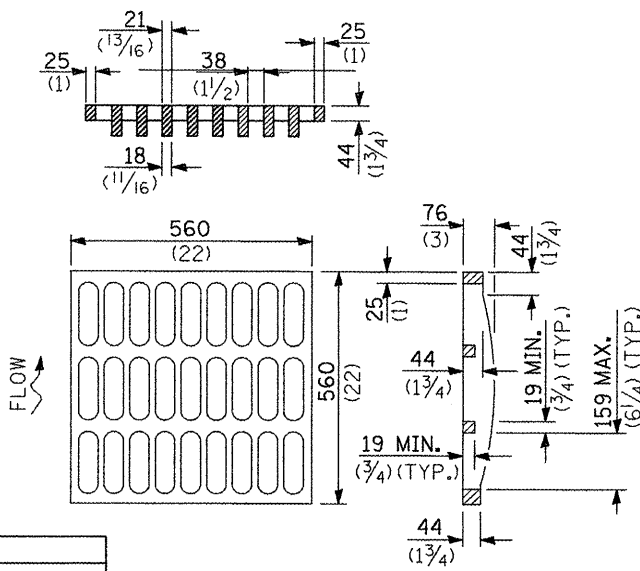


F.A.P. RTE.	SECTION	COUNTY	TOTAL SHEETS	SHEET NO.
399	36R-1, (37R-2)	TAZEWELL	449	275
STA.		TO STA.		
FED. ROAD DIST. NO. 4 ILLINOIS		FED. AID PROJECT		



QUANTITIES

MATERIAL	SINGLE	DOUBLE
CONCRETE - m <sup>3</sup> (cu.yd.)	( )	( )
CAST IRON GRATE - Ea. 57 kg (125 lbs.)	1	2
PIPE DRAIN - DIA. mm (in.)	400 (15)	450 (18)



**GENERAL NOTES**

The gutter outlet shall be tied to the pavement in accordance with details for longitudinal construction joint shown on Standard 420001.

Tie bars shall be No. 20 (No. 6) at 600mm (24") centers unless otherwise shown.

If the average grade of pavement for the distance A-D exceeds 2%, this distance shall be increased 1.8m (6') for each 1% increase in grade.

All dimensions are in millimeters (inches) unless otherwise noted.

ILLINOIS DEPARTMENT OF TRANSPORTATION  
**DISTRICT CADD STANDARD**

**OUTLET TYPE 1 (MODIFIED) FOR TYPE A GUTTER (MODIFIED)**

CADD STANDARD 606106-D4

NOT DRAWN TO SCALE  
 DATE: \*\*DATE\*\*

DRAWN BY CADD  
 CHECKED BY

DATE	REVISIONS	BY
1-1-97	RENUM. A-1.07, NEW REVISION BOX, ADDED DESIGNER NOTES.	T.P.

QUANTITIES

CALC. BY: \_\_\_\_\_ DATE: \_\_\_\_\_

CHECKED BY: \_\_\_\_\_ DATE: \_\_\_\_\_

QUANTITY CALCULATIONS ARE ON FILE AT THE DISTRICT 4 OFFICE, BUREAU OF PROJECT IMPLEMENTATION, DOCUMENTATION SECTION

DESIGNER NOTE:  
 1. INCLUDE STATE STANDARD 420001.  
 2. INCLUDE DISTRICT SPECIAL PROVISION.