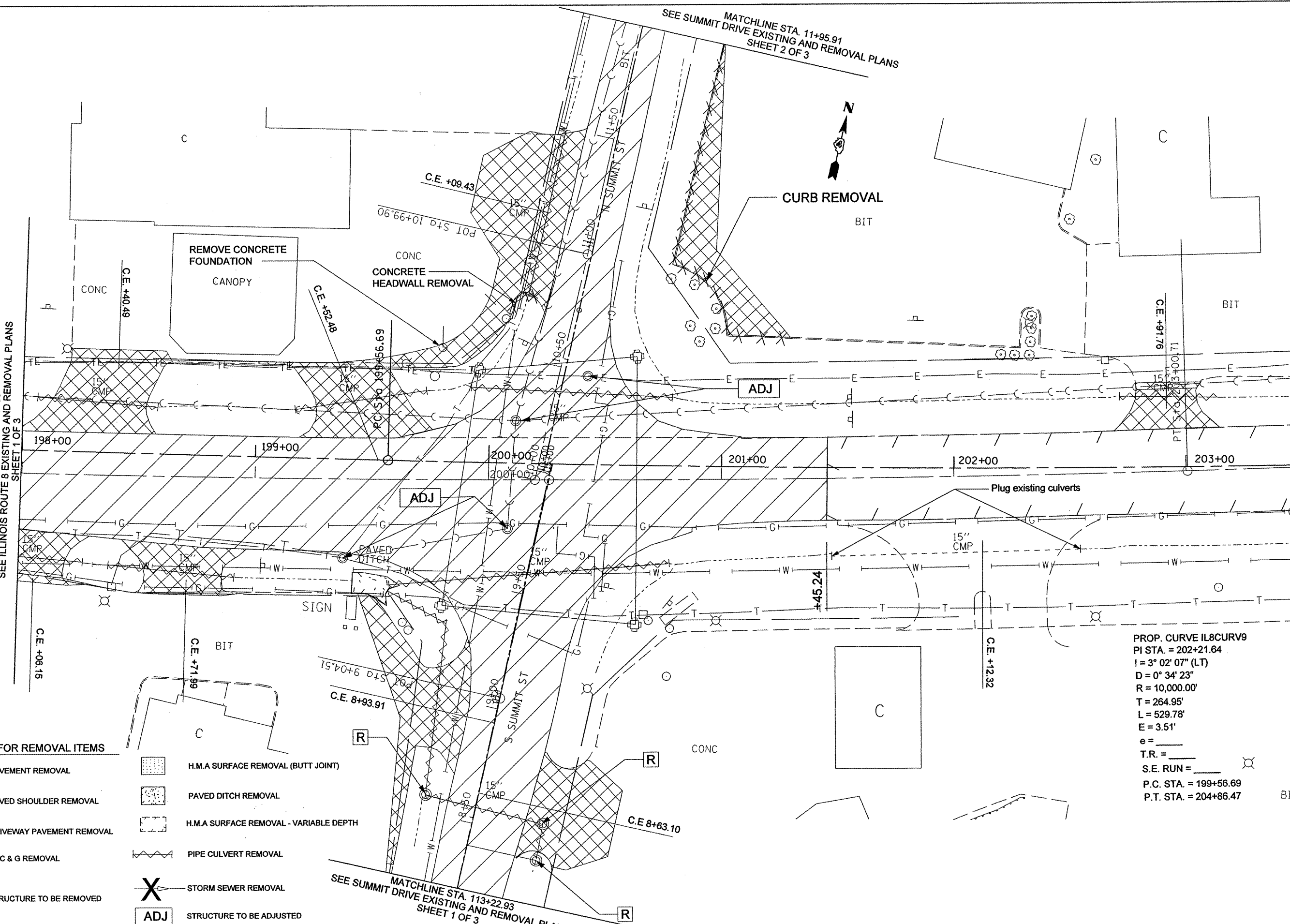


MATCHLINE STA. 11+95.91
SEE SUMMIT DRIVE EXISTING AND REMOVAL PLANS
SHEET 2 OF 3



MATCHLINE STA. 198+00
SEE ILLINOIS ROUTE 8 EXISTING AND REMOVAL PLANS
SHEET 1 OF 3

MATCHLINE STA. 203+50
SEE ILLINOIS ROUTE 8 EXISTING AND REMOVAL PLANS
SHEET 3 OF 3



PROP. CURVE IL8CURV9
PI STA. = 202+21.64
I = 3° 02' 07" (LT)
D = 0° 34' 23"
R = 10,000.00'
T = 264.95'
L = 529.78'
E = 3.51'
e = _____
T.R. = _____
S.E. RUN = _____
P.C. STA. = 199+56.69
P.T. STA. = 204+86.47

LEGEND FOR REMOVAL ITEMS

- PAVEMENT REMOVAL
- PAVED SHOULDER REMOVAL
- DRIVEWAY PAVEMENT REMOVAL
- CCC & G REMOVAL
- STRUCTURE TO BE REMOVED
- H.M.A SURFACE REMOVAL (BUTT JOINT)
- PAVED DITCH REMOVAL
- H.M.A SURFACE REMOVAL - VARIABLE DEPTH
- PIPE CULVERT REMOVAL
- STORM SEWER REMOVAL
- STRUCTURE TO BE ADJUSTED

MATCHLINE STA. 113+22.93
SEE SUMMIT DRIVE EXISTING AND REMOVAL PLANS
SHEET 1 OF 3

FILE NAME =	USER NAME = #USER#	DESIGNED -	REVISED -	STATE OF ILLINOIS DEPARTMENT OF TRANSPORTATION	ILLINOIS ROUTE 8 EXISTING AND REMOVAL PLANS	F.A.U. RTE.	SECTION	COUNTY	TOTAL SHEETS	SHEET NO.	
#FILE#		DRAWN -	REVISED -			6775	04-00141-00-FP	TAZEWELL	187	39	
PLLOT SCALE = #SCALE#		CHECKED -	REVISED -			SCALE: 1" = 20'-0" SHEET NO. 2 OF 3 SHEETS STA. 198+00.00 TO STA. 203+50.00			CONTRACT NO. 89352		
PLLOT DATE = #DATE#		DATE -	REVISED -			FED. ROAD DIST. NO. 4 ILLINOIS FED. AID PROJECT					