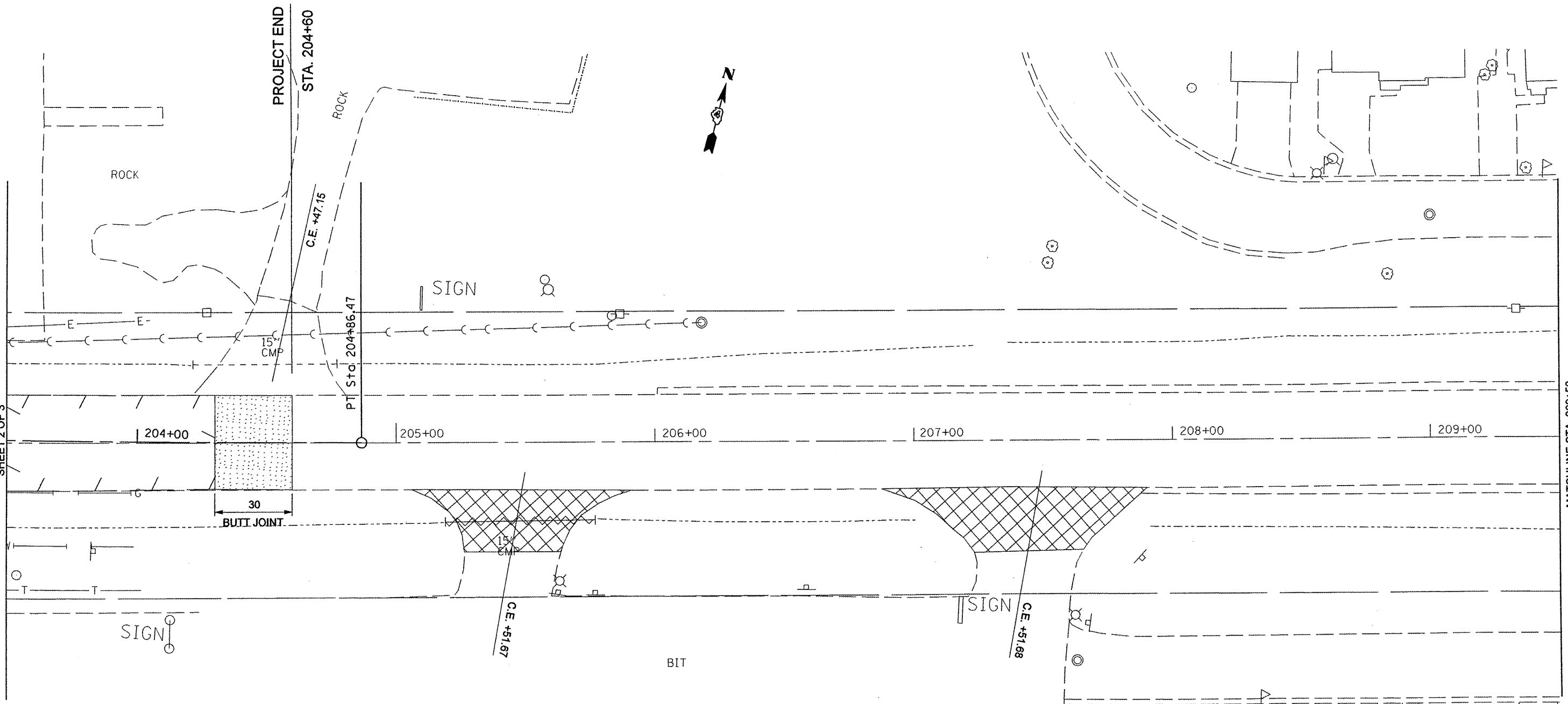


MATCHLINE STA. 203+50
SEE ILLINOIS ROUTE 8 EXISTING AND REMOVAL PLANS
SHEET 2 OF 3



LEGEND FOR REMOVAL ITEMS

	PAVEMENT REMOVAL		H.M.A SURFACE REMOVAL (BUTT JOINT)
	PAVED SHOULDER REMOVAL		PAVED DITCH REMOVAL
	DRIVEWAY PAVEMENT REMOVAL		H.M.A SURFACE REMOVAL - VARIABLE DEPTH
	CCC & G REMOVAL		PIPE CULVERT REMOVAL
	STRUCTURE TO BE REMOVED		STORM SEWER REMOVAL
	STRUCTURE TO BE ADJUSTED		

FILE NAME =	USER NAME = #USER#	DESIGNED -	REVISED -
#FILE#		DRAWN -	REVISED -
		CHECKED -	REVISED -
		DATE -	REVISED -

**STATE OF ILLINOIS
DEPARTMENT OF TRANSPORTATION**

**ILLINOIS ROUTE 8
EXISTING AND REMOVAL PLANS**

SCALE: 1" = 20'-0" SHEET NO. 3 OF 3 SHEETS STA. 203+50.00 TO STA. 209+50.00

F.A.U. RTE.	SECTION	COUNTY	TOTAL SHEETS	SHEET NO.
6775	04-00141-00-FP	TAZEWELL	187	40
FED. ROAD DIST. NO. 4 ILLINOIS FED. AID PROJECT			CONTRACT NO. 89352	