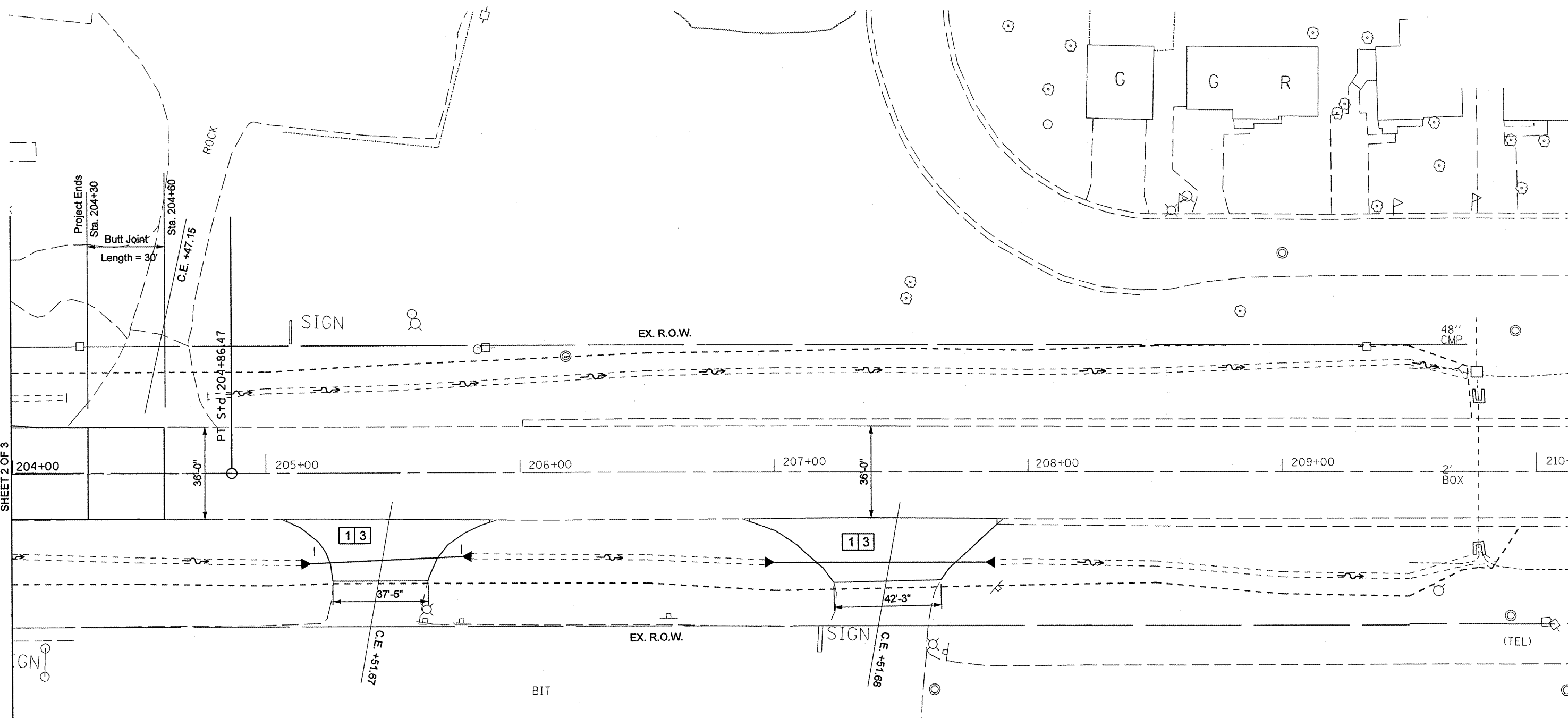


MATCHLINE STA. 204+00
SEE ILLINOIS ROUTE 8 ROADWAY CONSTRUCTION PLANS
SHEET 2 OF 3



LEGEND:

- 1 H-M-A BASE COURSE 6"
- 2 POLYMERIZED H-M-A SURFACE COURSE, MIX "E", N50
- 3 INCIDENTAL H-M-A SURFACING, 1.5"
- 4 P.C.C PAVEMENT 10" (JOINTED)
- 5 P.C.C. DRIVEWAY PAVEMENT, 8"
- 6 P.C.C. SIDEWALK, 4"
- 7 P.C.C. SIDEWALK 4" SPECIAL
- 8 P.C.C. SIDEWALK 6"
- 9 P.C.C. SIDEWALK 6" SPECIAL
- 10 COMB. C.C.&G., TYPE B-6.12
- 11 COMB. C.C.&G., TYPE B-6.24
- 12 CONCRETE CURB TYPE B
- 13 CONC. MEDIAN, TYPE SM-6.12
- 14 PRECAST MODULAR BLOCK WALL

FILE NAME =	USER NAME = #USER#	DESIGNED -	REVISED -	STATE OF ILLINOIS DEPARTMENT OF TRANSPORTATION	ILLINOIS ROUTE 8 ROADWAY CONSTRUCTION PLAN	F.A.U RTE.	SECTION	COUNTY	TOTAL SHEETS	SHEET NO.
*FILE#		DRAWN -	REVISED -			6775	04-00141-00-FP	TAZEWELL	187	51
		CHECKED -	REVISED -			CONTRACT NO. 89352				
		DATE -	REVISED -	SCALE: 1" = 20'		SHEET NO. 3 OF 3 SHEETS		STA. 204+00.00 TO STA. 210+00.00		FED. ROAD DIST. NO. 4 [ILLINOIS] FED. AID PROJECT