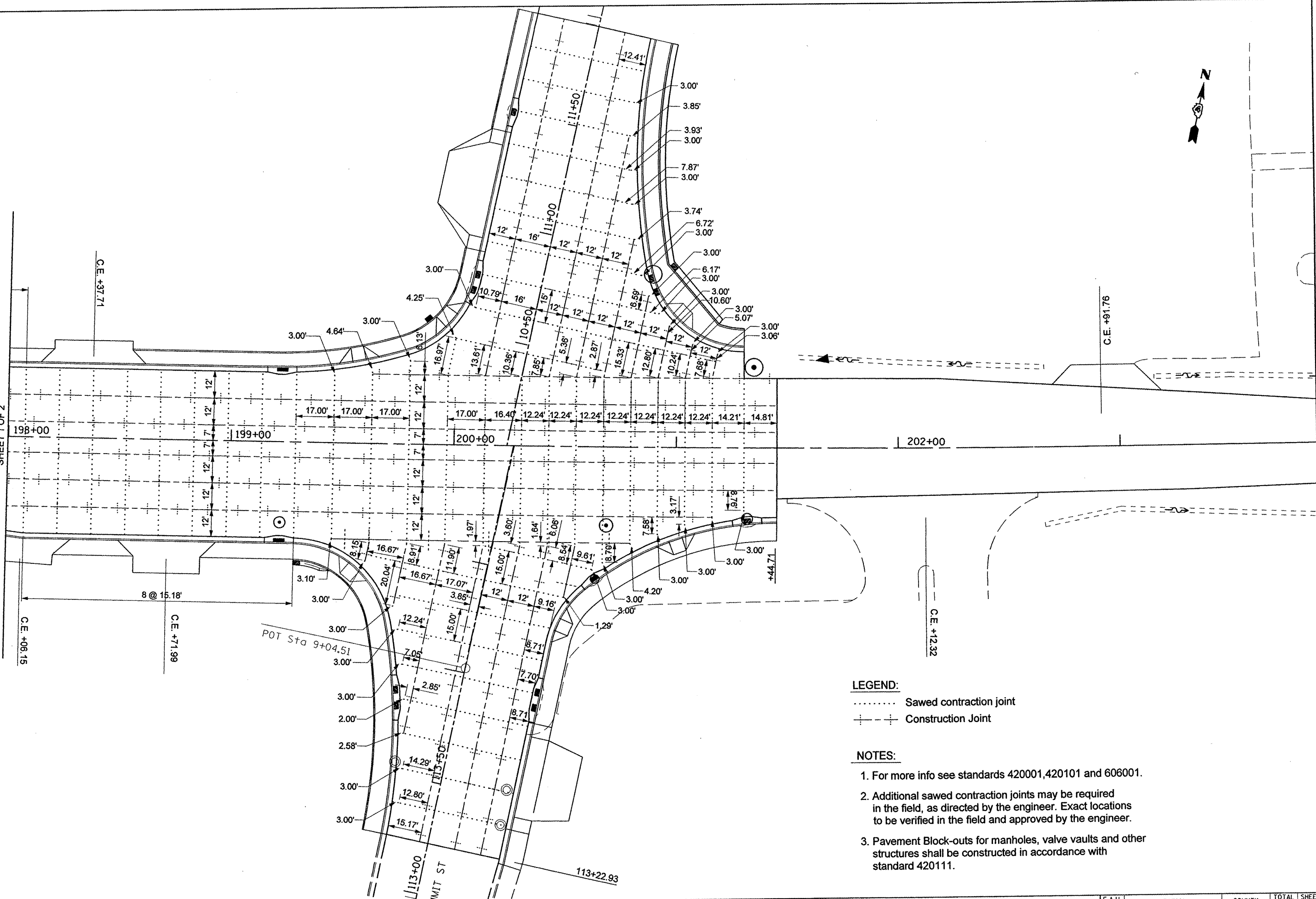




MATCHLINE STA. 198+00
SEE ILLINOIS ROUTE 8 PAVEMENT JOINT PLAN
SHEET 1 OF 2



LEGEND:

- Sawed contraction joint
- - - - - Construction Joint

NOTES:

1. For more info see standards 420001, 420101 and 606001.
2. Additional sawed contraction joints may be required in the field, as directed by the engineer. Exact locations to be verified in the field and approved by the engineer.
3. Pavement Block-outs for manholes, valve vaults and other structures shall be constructed in accordance with standard 420111.

FILE NAME =	USER NAME = *USER*	DESIGNED -	REVISED -	STATE OF ILLINOIS DEPARTMENT OF TRANSPORTATION	ILLINOIS ROUTE 8 PAVEMENT JOINT PLAN	F.A.U. RTE.	SECTION	COUNTY	TOTAL SHEETS	SHEET NO.	
*FILEL#		DRAWN -	REVISED -			6775	04-00141-00-FP	TAZEWELL	187	82	
		CHECKED -	REVISED -			CONTRACT NO. 89352					
		DATE	REVISED -			FED. ROAD DIST. NO. 4 ILLINOIS FED. AID PROJECT					
		PLOT SCALE = *SCALE*		SCALE: 1" = 20'		SHEET NO. 2 OF 2 SHEETS		STA. 198+00.00 TO STA. 204+00.00			
		PLOT DATE = *DATE*									