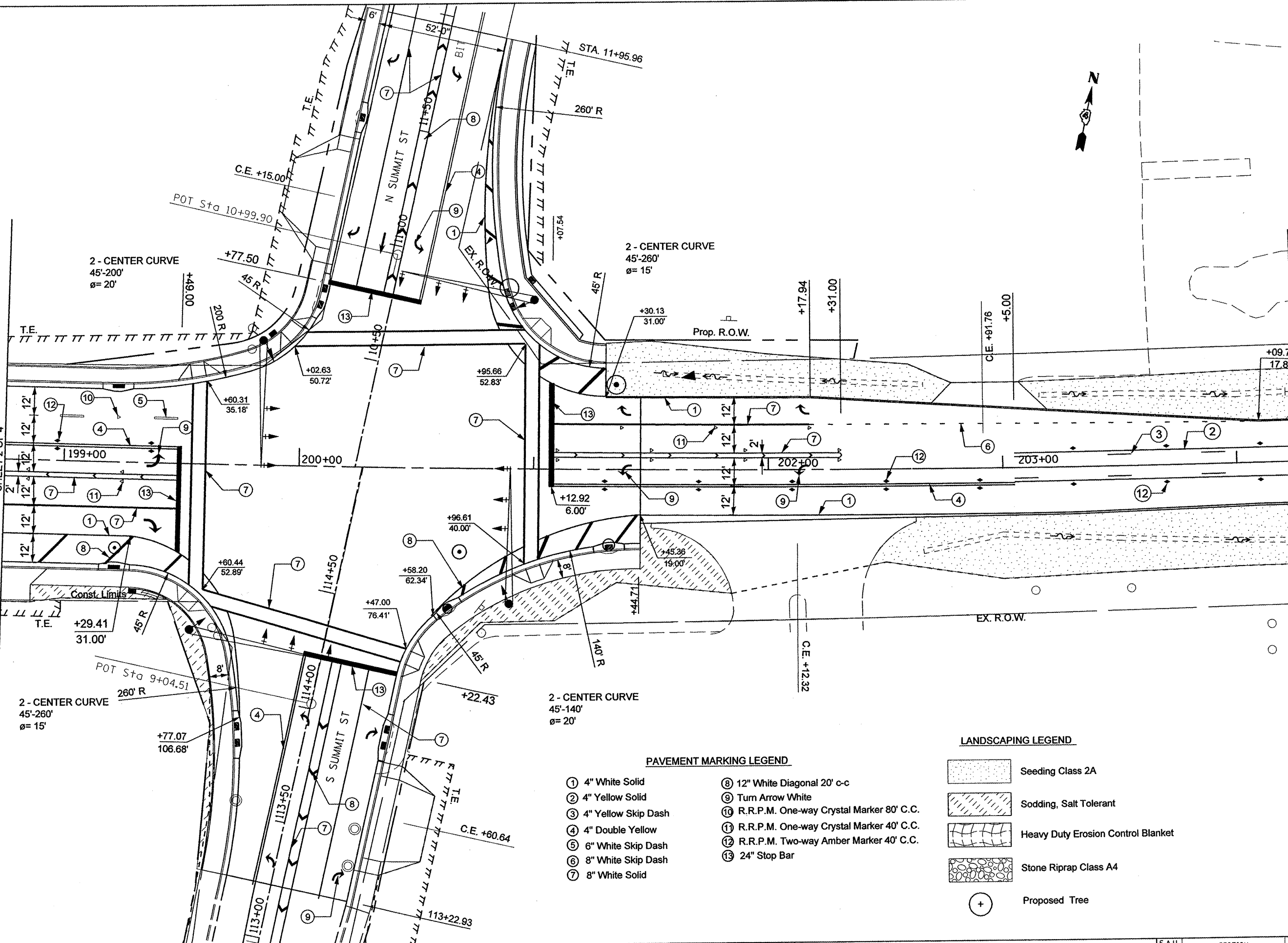


MATCHLINE STA. 198+75.00
SEE ILLINOIS ROUTE 8 PAVEMENT MARKING AND LANDSCAPING PLANS
SHEET 2 OF 4

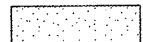

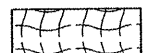


MATCHLINE STA. 204+25.00
SEE ILLINOIS ROUTE 8 PAVEMENT MARKING AND LANDSCAPING PLANS
SHEET 4 OF 4



PAVEMENT MARKING LEGEND

- ① 4" White Solid
- ② 4" Yellow Solid
- ③ 4" Yellow Skip Dash
- ④ 4" Double Yellow
- ⑤ 6" White Skip Dash
- ⑥ 8" White Skip Dash
- ⑦ 8" White Solid
- ⑧ 12" White Diagonal 20' c-c
- ⑨ Turn Arrow White
- ⑩ R.R.P.M. One-way Crystal Marker 80' C.C.
- ⑪ R.R.P.M. One-way Crystal Marker 40' C.C.
- ⑫ R.R.P.M. Two-way Amber Marker 40' C.C.
- ⑬ 24" Stop Bar

LANDSCAPING LEGEND

-  Seeding Class 2A
-  Sodding, Salt Tolerant
-  Heavy Duty Erosion Control Blanket
-  Stone Riprap Class A4
-  Proposed Tree

FILE NAME =
#FILEL#

USER NAME = #USER#	DESIGNED -	REVISED -
PLOT SCALE = #SCALE#	DRAWN -	REVISED -
PLOT DATE = #DATE#	CHECKED -	REVISED -
	DATE -	REVISED -

**STATE OF ILLINOIS
DEPARTMENT OF TRANSPORTATION**

**ILLINOIS ROUTE 8
PAVEMENT MARKING & LANDSCAPING PLAN**
SCALE: 1" = 20' SHEET NO. 3 OF 4 SHEETS STA. 198+75.00 TO STA. 204+25.00

F.A.U. RTE.	SECTION	COUNTY	TOTAL SHEETS	SHEET NO.
6775	04-00141-00-FP	TAZEWELL	187	85
FED. ROAD DIST. NO. 4 [ILLINOIS] FED. AID PROJECT				
CONTRACT NO. 89352				