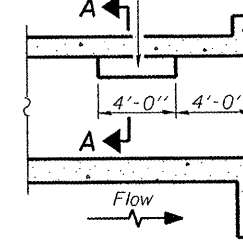


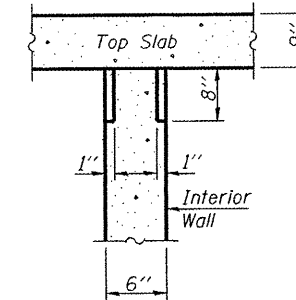
Benchmark:

STATE OF ILLINOIS  
DEPARTMENT OF TRANSPORTATION

Notch formed by rough finished board attached to and removed with form work, each interior wall. (Do not chamfer).



LONGITUDINAL SECTION



SECTION A-A

PHOEBE NESTING  
SITE DETAILS  
(Downstream End Only)

INDEX OF SHEETS

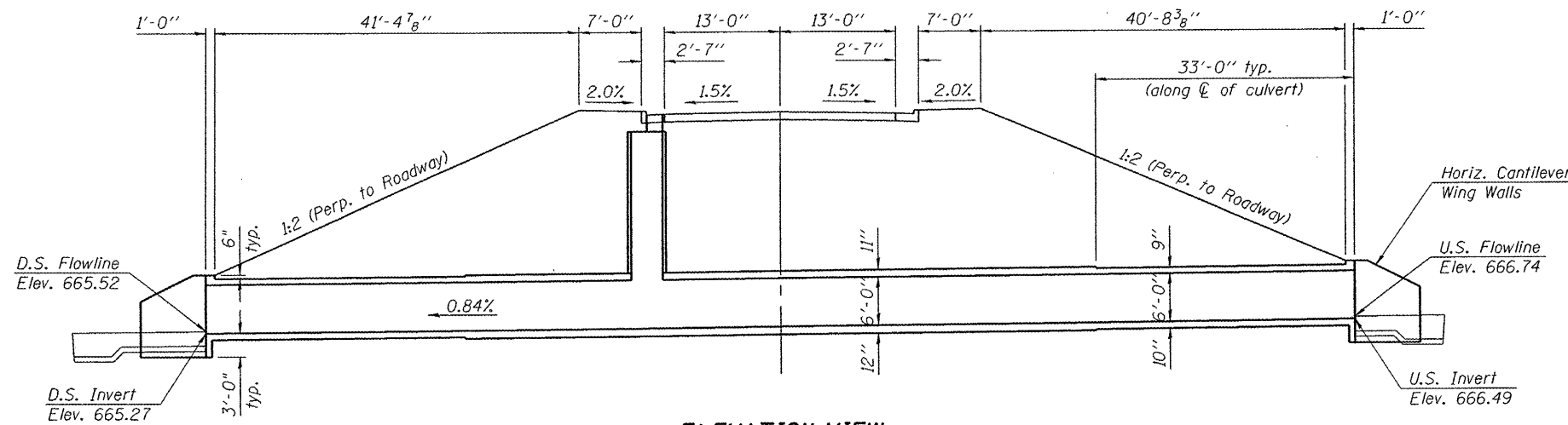
1. General Plan and Elevation
2. Culvert Plan
3. Culvert Details

GENERAL NOTES

1. Reinforcing bars shall conform to the requirements of ASTM A 706 Grade 60, (IL. modified). See Special Provisions.
2. Precast alternate is not allowed.

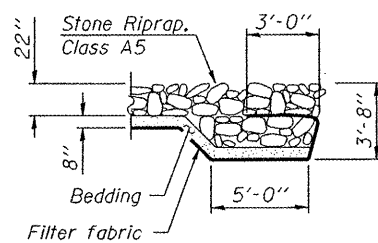
TOTAL BILL OF MATERIAL

ITEM	UNIT	TOTAL
Stone Riprap, Class A5	Sq. Yd.	71
Filter Fabric	Sq. Yd.	71
Reinforcement Bars	Pound	34790
Concrete Box Culverts	Cu. Yd.	198.4

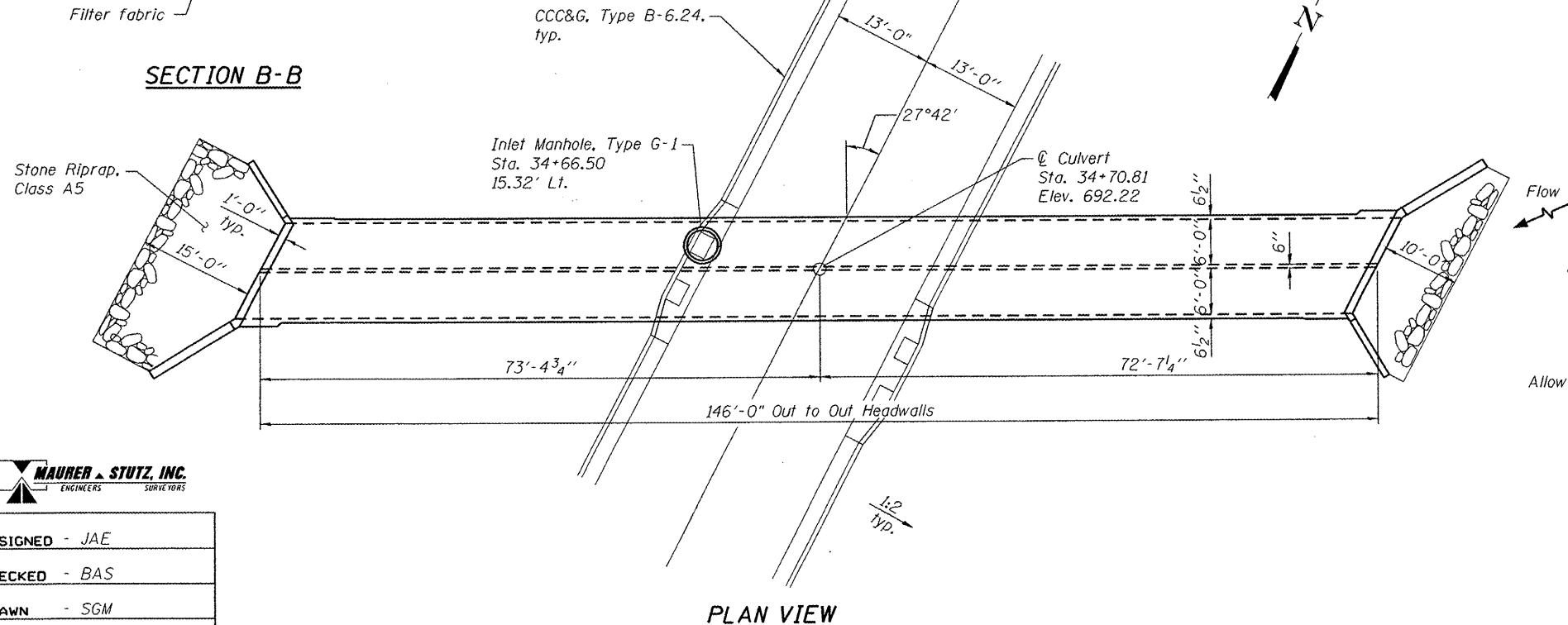


ELEVATION VIEW

(Horizontal dimensions & cross slopes at rt. L's to  $\phi$  roadway unless noted otherwise)  
Looking North



SECTION B-B



PLAN VIEW

DESIGN SPECIFICATIONS  
2002 AASHTO

LOADING HS20-44  
Allow 50#/sq. ft. for future wearing surface.

DESIGN STRESSES  
FIELD UNITS

$f'_c = 3,500$  psi  
 $f_y = 60,000$  psi (Reinforcement)

GENERAL PLAN AND ELEVATION  
SUMMIT DRIVE  
F.A.U. 6774 SEC. 04-00141-00-FP  
TAZEWELL COUNTY  
STATION 34+70.81



DESIGNED - JAE
CHECKED - BAS
DRAWN - SGM
CHECKED - BAS

SHEET NO. 1	F.A.U. RTE.	SECTION	COUNTY	TOTAL SHEETS	SHEET NO.
3 SHEETS	6775	04-00141-00-FP	TAZEWELL	187	97
			CONTRACT NO. 89352		
ILLINOIS FED. AID PROJECT					