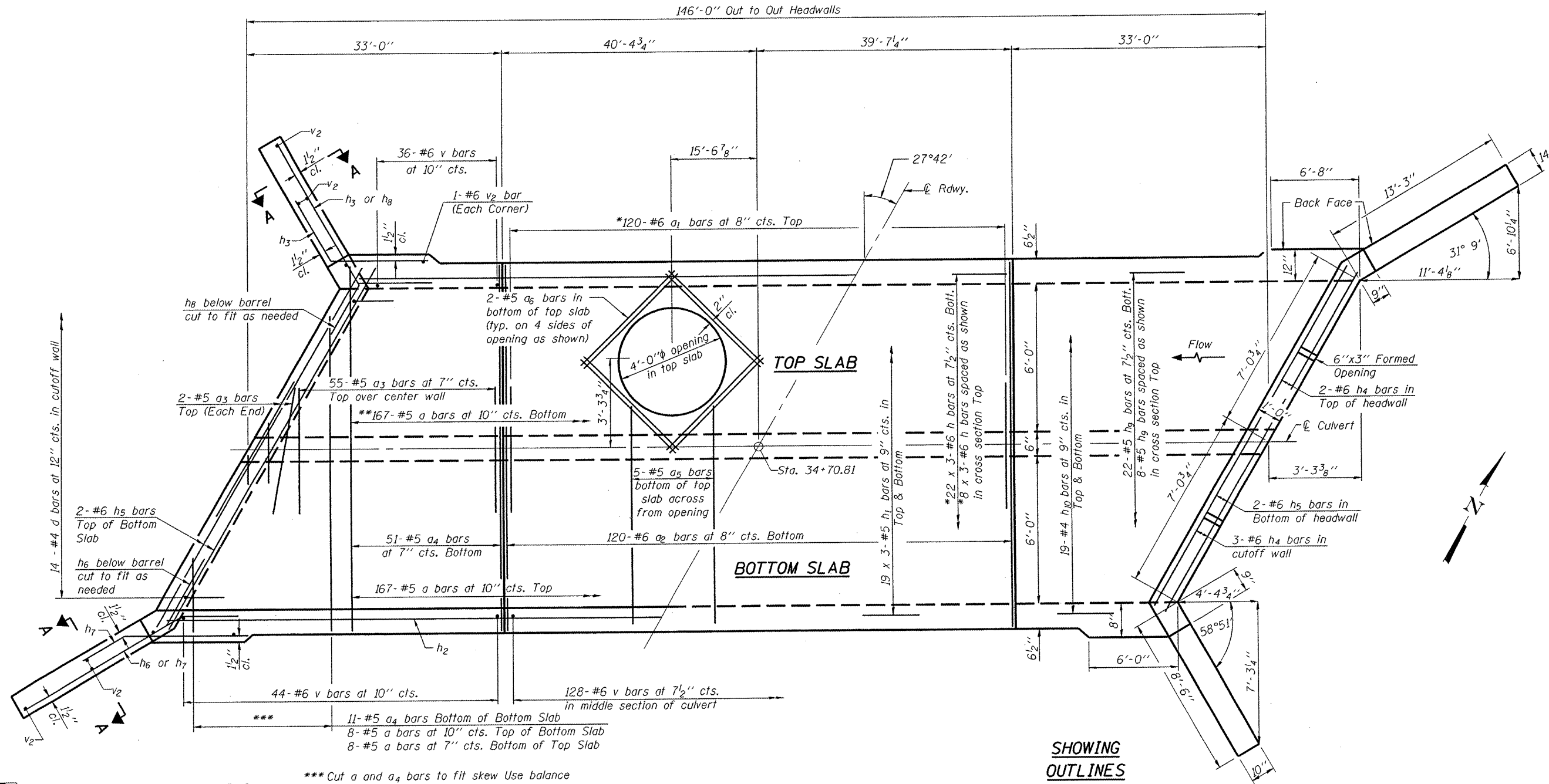


STATE OF ILLINOIS
DEPARTMENT OF TRANSPORTATION

Notes: A distance of half the length of the wingwall but not less than six feet of the barrel shall be poured monolithically with the wingwalls.
Bars indicated thus 12 x 4-#5 etc. indicates 12 lines of bars with 4 lengths per line.



SHOWING REINFORCEMENT

PLAN

SHOWING OUTLINES

CULVERT PLAN

DESIGNED - JAE
CHECKED - BAS
DRAWN - SGM
CHECKED - BAS

*** Cut a and a4 bars to fit skew Use balance of bar in opposite end.

* Cut a1 & h bars to avoid opening for manhole
** Shift a bars to avoid opening for manhole

SHEET NO. 2 3 SHEETS	F.A.U. RTE.	SECTION	COUNTY	TOTAL SHEETS	SHEET NO.
	6775	04-00141-00-FP	TAZEWELL	187	98
CONTRACT NO. 89352					
ILLINOIS FED. AID PROJECT					