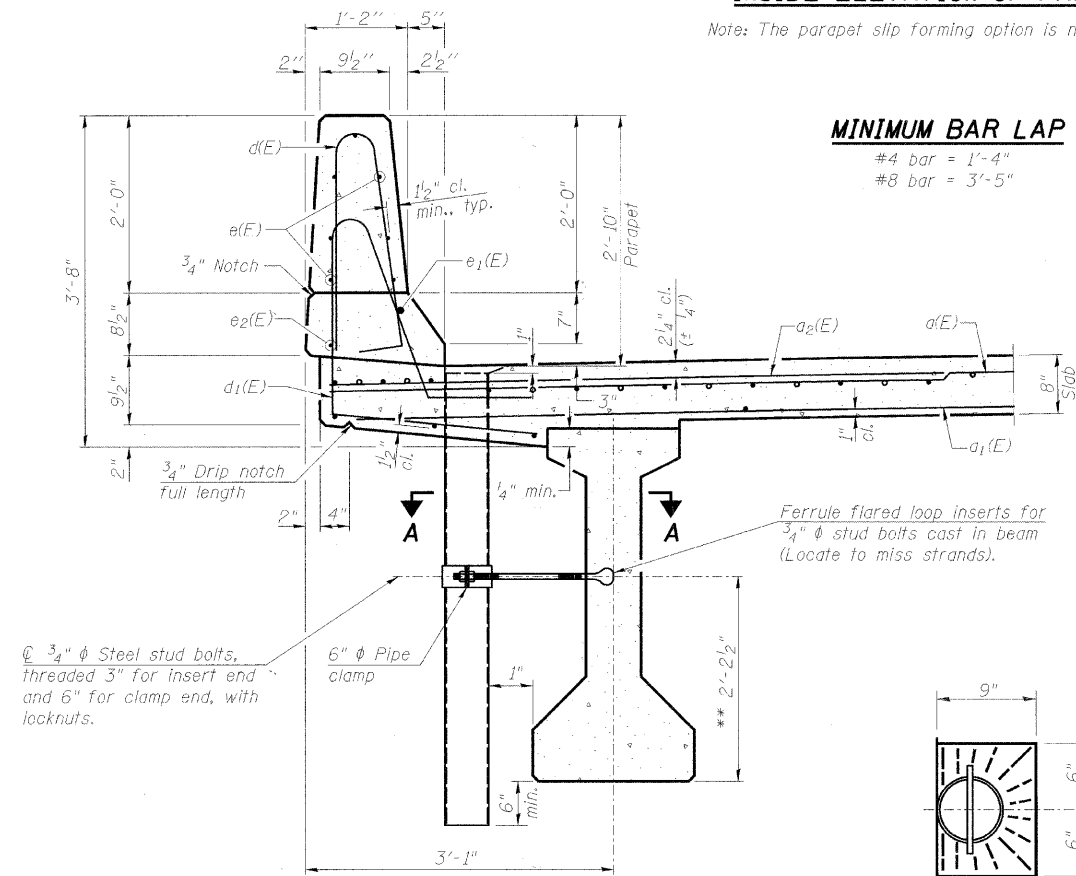


INSIDE ELEVATION OF PARAPET

Note: The parapet slip forming option is not permitted.



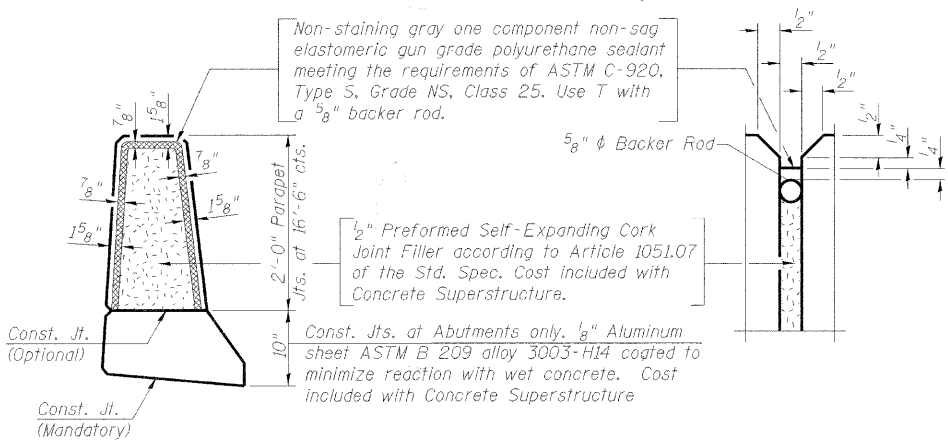
SECTION THRU PARAPET

**For insert locations See Sht. 17 of 32.

TOP PLAN

TOP PLAN

(Showing Aluminum Tube)



PARAPET JOINT DETAILS

- Notes:
- Fiberglass pipe shall conform to ASTM D2996, with short-time rupture strength hoop tensile stress of 30,000 p.s.i. minimum.
 - The exterior surfaces of the floor drains shall be coated or pigmented by the manufacturer with a color that matches the concrete.
 - The clamping device and inserts shall be galvanized according to AASHTO M 232.

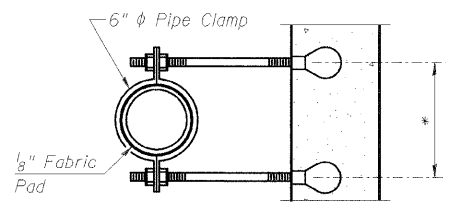
SUPERSTRUCTURE BILL OF MATERIAL

Bar	No.	Size	Length	Shape
d(E)	131	#5	38'-6"	—
d ₁ (E)	118	#5	37'-10"	—
d ₂ (E)	258	#6	6'-0"	—
d ₃ (E)	4	#5	42'-10"	—
b(E)	126	#5	34'-4"	—
b ₁ (E)	120	#5	26'-4"	—
d(E)	216	#5	5'-7"	⌋
d ₁ (E)	216	#5	7'-5"	⌋
e(E)	84	#4	16'-2"	—
e ₁ (E)	6	#8	35'-2"	—
e ₂ (E)	6	#4	33'-9"	—
m(E)	4	#6	42'-10"	—
m ₁ (E)	6	#6	42'-10"	—
m ₂ (E)	28	#6	8'-10"	—
m ₃ (E)	12	#6	3'-8"	—
m ₄ (E)	4	#6	2'-0"	—
s(F)	72	#5	7'-2"	⌋
s ₁ (E)	60	#4	12'-10"	⌋
v(E)	78	#5	3'-4"	⌋
Reinforcement Bars, Epoxy Coated		Lbs.	27,180	
Concrete Superstructure		Cu. Yds.	165.6	
Bridge Deck Grooving		Sq. Yd.	374	
Protective Coat		Sq. Yd.	493	
Floor Drains		Each	12	
Monodirectional Prismatic Barrier Reflector		Each	12	
Name Plates		Each	1	

Bars indicated thus 1x3-#5 etc. indicates 1 line of bars with 3 lengths per line.

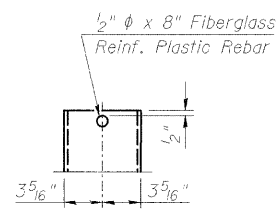
**SUPERSTRUCTURE DETAILS
ELMORE ROAD BRIDGE
OVER FRENCH CREEK**

DESIGNED	PJL
CHECKED	LLV
DRAWN	MGM
CHECKED	PJL

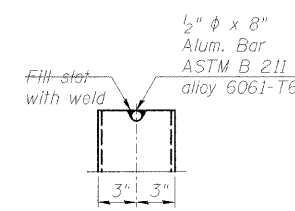


SECTION A-A

*Dimension as required by Pipe Clamp



FIBERGLASS PIPE



ALUMINUM TUBE

AECOM

111 NE Jefferson Ave.
Peoria, Illinois 61602
Ph: 309.676.8464
Fax: 309.676.5445
IL Design Firm Reg. No. 184-001518
www.aecom.com

HWY	SECTION	COUNTY	TOTAL SHEETS	SHEET NO.
R-15	08-00092-00-BR	PEORIA	32	14
STRUCTURE NO. 072-3147		STATION 7+27		
FED. ROAD DIST. NO. - ILLINOIS		FED. AID PROJECT BROS-0143(049)		