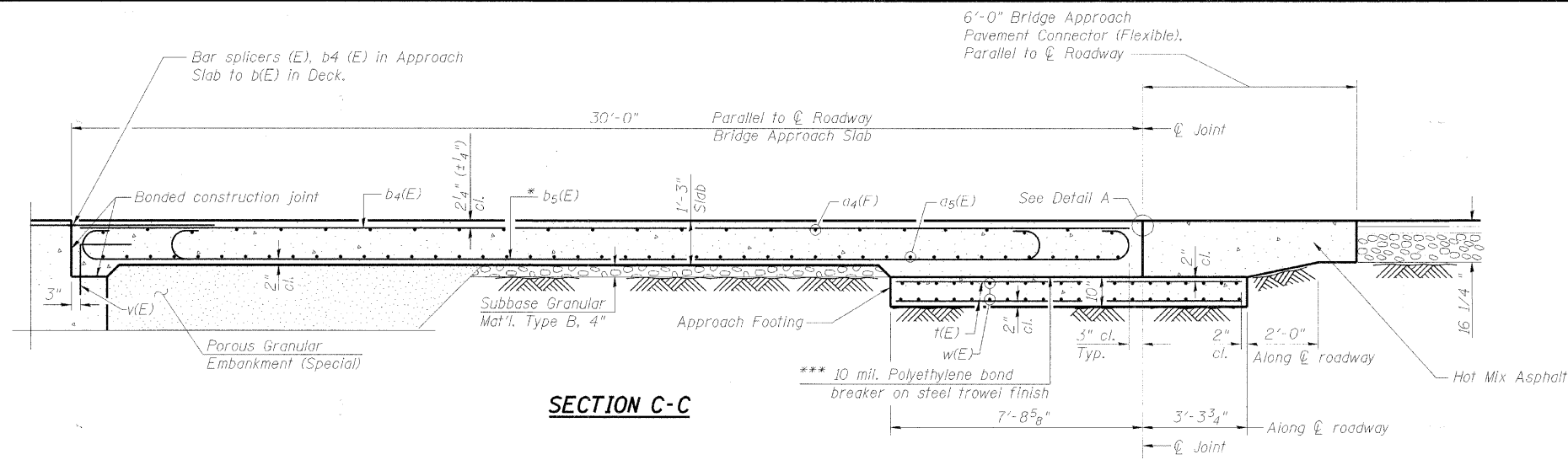
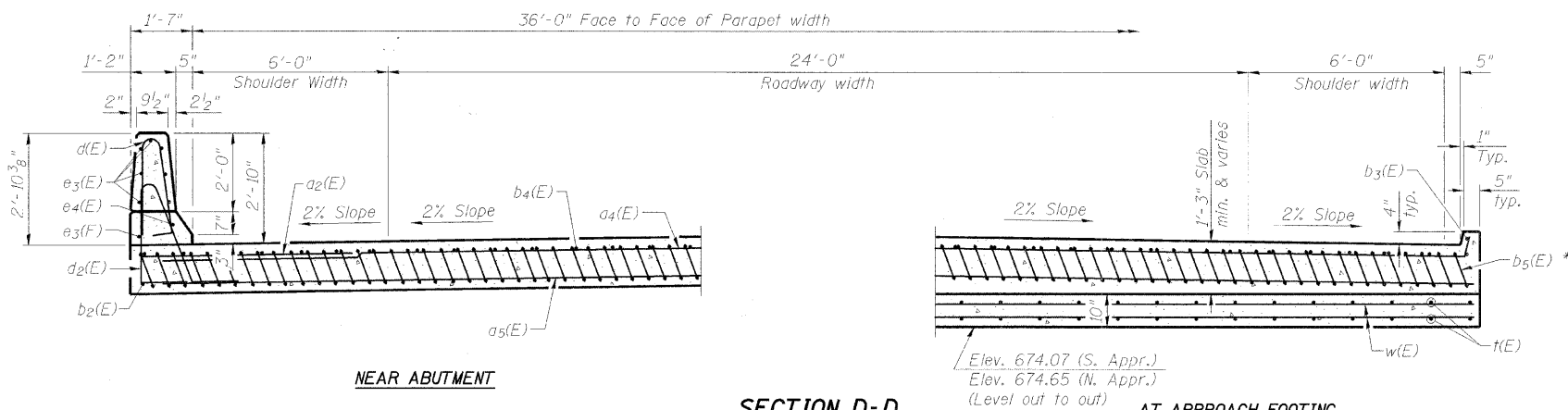


**NOTES**

1. See Sht. 15 of 32 for Detail A and View B-B.
2. Approach slab and parapet concrete shall be paid for as Concrete Superstructure.
3. Approach footing concrete shall be paid for as Concrete Structures.
4. Reinforcement shall be paid for as Reinforcement Bars, Epoxy Coated.
5. For v(E) bar details, see Sht. 14 of 32.
6. The approach footing maximum applied service bearing pressure ( $Q_{max}$ ) = 2.0 ksf.
7. For bar splicer details, see Sht. 22 of 32.
8. Cost of excavation for approach footing included with Concrete Structures.
9. For Porous Granular Embankment (Special) and drainage treatment details, see Sht. 19 of 32.



**SECTION C-C**

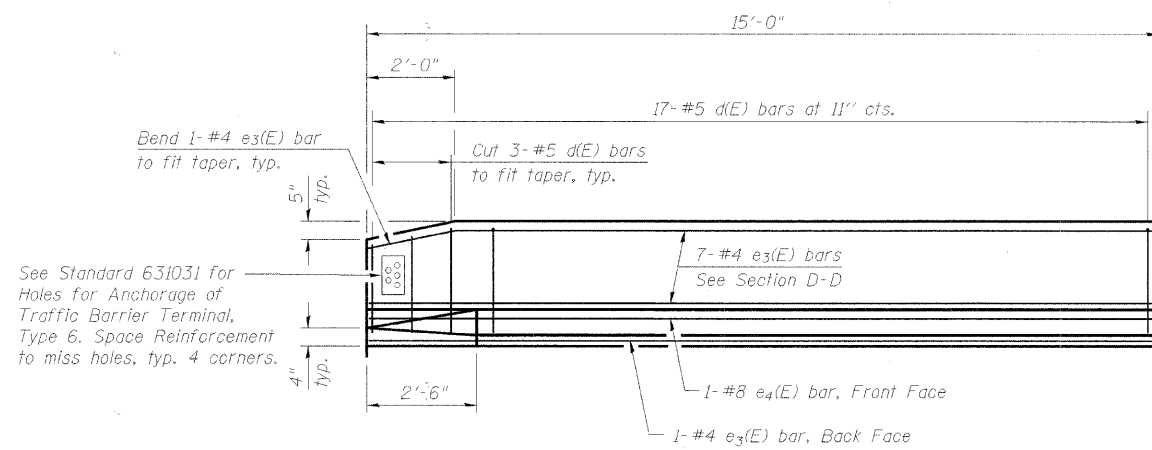


**NEAR ABUTMENT**

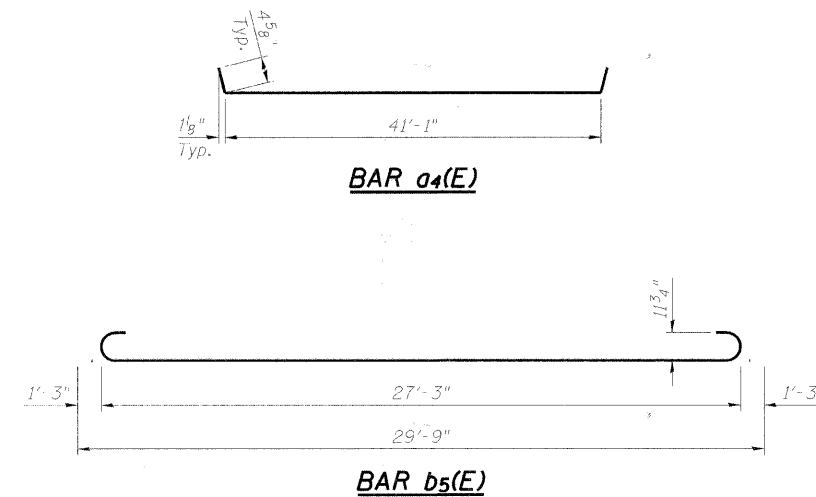
**SECTION D-D**

(See Plan for dimensions not shown)

**AT APPROACH FOOTING**

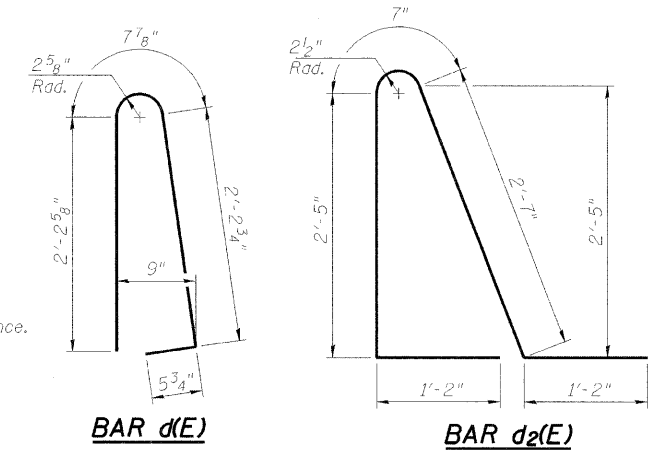


**VIEW E-E**



**BAR a4(E)**

**BAR b5(E)**



**BAR d(E)**

**BAR d2(E)**

**TWO APPROACHES  
BILL OF MATERIAL**

Bar	No.	Size	Length	Shape
a2(E)	48	#6	6'-0"	—
a4(E)	50	#4	41'-11"	—
a5(E)	92	#5	41'-4"	—
b2(E)	4	#4	14'-8"	—
b3(E)	4	#4	14'-10"	—
b4(E)	76	#4	29'-8"	—
b5(E)	180	#9	29'-9"	—
d(F)	68	#5	5'-7"	—
d2(E)	68	#5	7'-11"	—
e3(E)	32	#4	14'-8"	—
e4(E)	4	#8	14'-8"	—
t(E)	152	#4	10'-8"	—
w(E)	80	#5	41'-4"	—
Concrete Superstructure		Cu. Yd.	117.0	
Concrete Structures		Cu. Yd.	25.8	
Reinforcement Bars, Epoxy Coated		Pound	31,550	
Bridge Deck Grooving		Sq. Yd.	227	
Protective Coat		Sq. Yd.	278	
Bridge Approach Pvmnt. Connector (Flexible)		Sq. Yd.	50.4	

**BRIDGE APPROACH  
SLAB DETAILS  
ELMORE ROAD BRIDGE  
OVER FRENCH CREEK**

DESIGNED	P.J.L.
CHECKED	LLV
DRAWN	MGM
CHECKED	P.J.L.

**AECOM**

111 NE Jefferson Ave.  
Peoria, Illinois 61602  
Ph: 309.676.8464  
Fax: 309.676.5445  
IL Design Firm Reg.  
No. 184-001518  
www.aecom.com

HWY	SECTION	COUNTY	TOTAL SHEETS	SHEET NO.
R-15	08-00092-00-BR	PEORIA	32	16
STRUCTURE NO. 072-3147			STATION 7+27	
FED. ROAD DIST. NO. _ ILLINOIS FED. AID PROJECT BROS-0143(O49)				