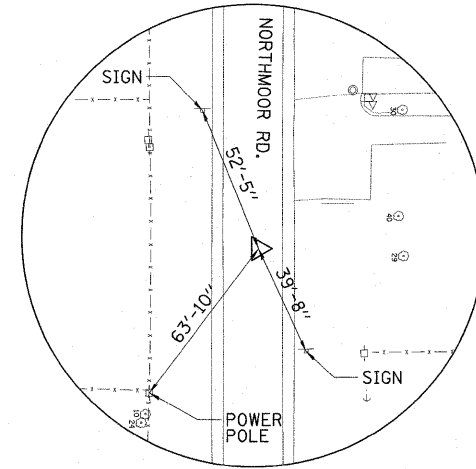
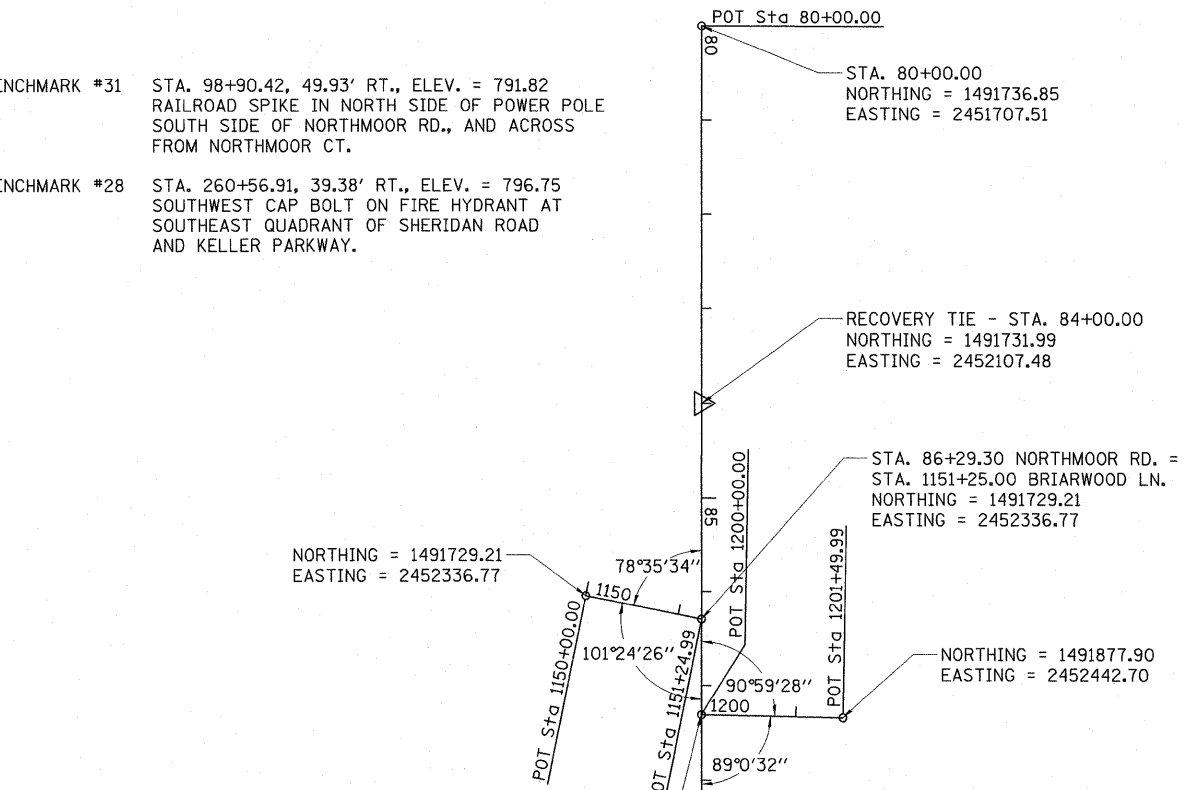
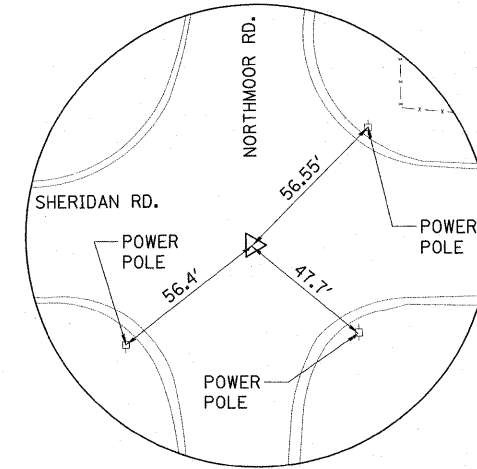


BENCHMARK #31 STA. 98+90.42, 49.93' RT., ELEV. = 791.82  
RAILROAD SPIKE IN NORTH SIDE OF POWER POLE  
SOUTH SIDE OF NORTHMOOR RD., AND ACROSS  
FROM NORTHMOOR CT.

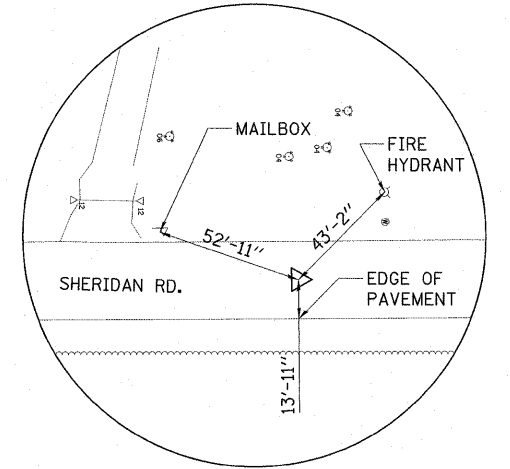
BENCHMARK #28 STA. 260+56.91, 39.38' RT., ELEV. = 796.75  
SOUTHWEST CAP BOLT ON FIRE HYDRANT AT  
SOUTHEAST QUADRANT OF SHERIDAN ROAD  
AND KELLER PARKWAY.



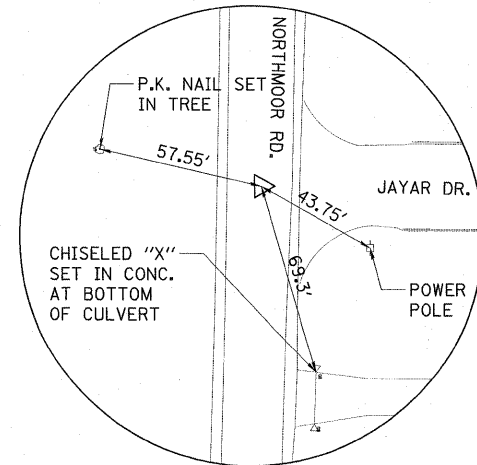
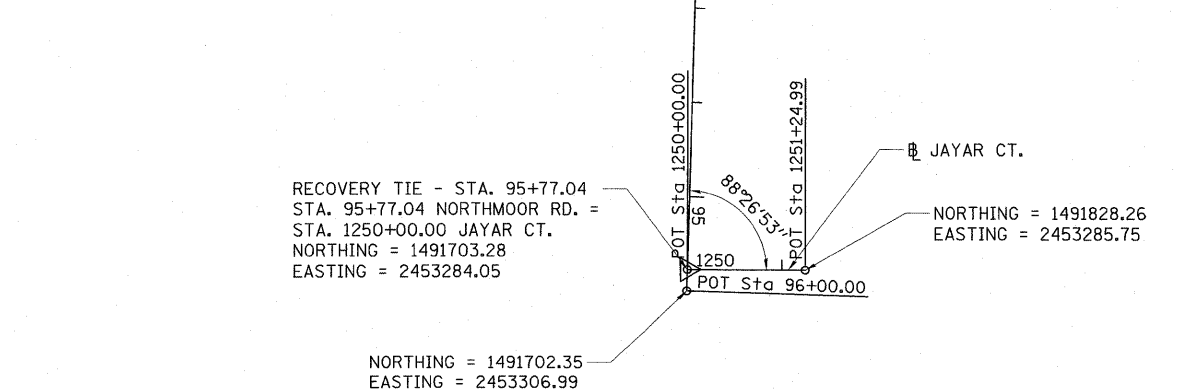
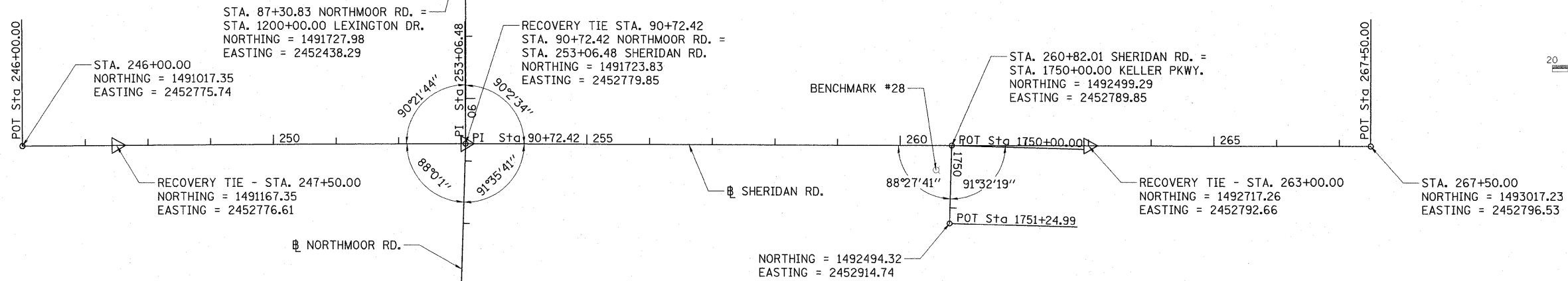
RECOVERY TIE -  $\phi$  STA. 84+00.00  
P.K. NAIL IN PAVEMENT



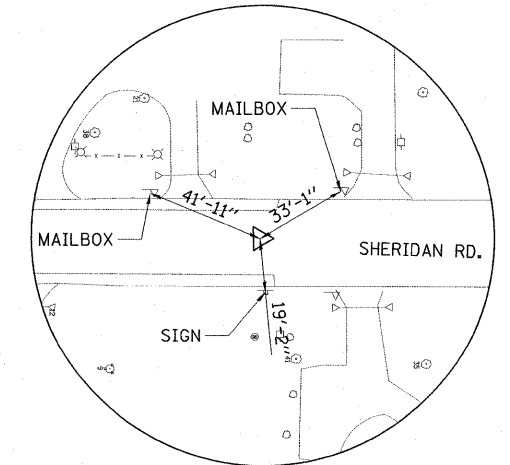
RECOVERY TIE -  $\phi$  STA. 90+72.42  
P.K. NAIL IN PAVEMENT



RECOVERY TIE -  $\phi$  STA. 247+50.00  
P.K. NAIL IN PAVEMENT



RECOVERY TIE -  $\phi$  STA. 95+77.04  
P.K. NAIL IN PAVEMENT



RECOVERY TIE -  $\phi$  STA. 263+00.00  
P.K. NAIL IN PAVEMENT

© Copyright Hanson Professional Services Inc. 2010  
**HANSON**  
Hanson Professional Services Inc.

FILE NAME = I:\09Jobs\09L0027\CADD\Road\Sheet\c-10\ties.dgn	USER NAME = Ander\00846	DESIGNED - RLA	REVISED -	<b>STATE OF ILLINOIS DEPARTMENT OF TRANSPORTATION</b>	<b>ALIGNMENT, BENCHMARK, AND TIES PLAN</b>	F.A. RTE.	SECTION	COUNTY	TOTAL SHEETS	SHEET NO.
PLOT SCALE = 100.0000' / in.	CHECKED - CAL	DRAWN - RLA	REVISED -			6647	08-00302-00-TL	PEORIA	102	10
PLOT DATE = 03/19/10	DATE - 03/19/10	CHECKED - CAL	REVISED -			6595	09-00047-02-TL			
						SCALE: N.T.S. SHEET NO. OF SHEETS STA. TO STA.		CONTRACT NO. 89523 FED. ROAD DIST. NO. ILLINOIS FED. AID PROJECT M-5093(138)		