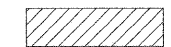
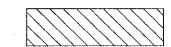

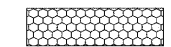

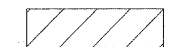
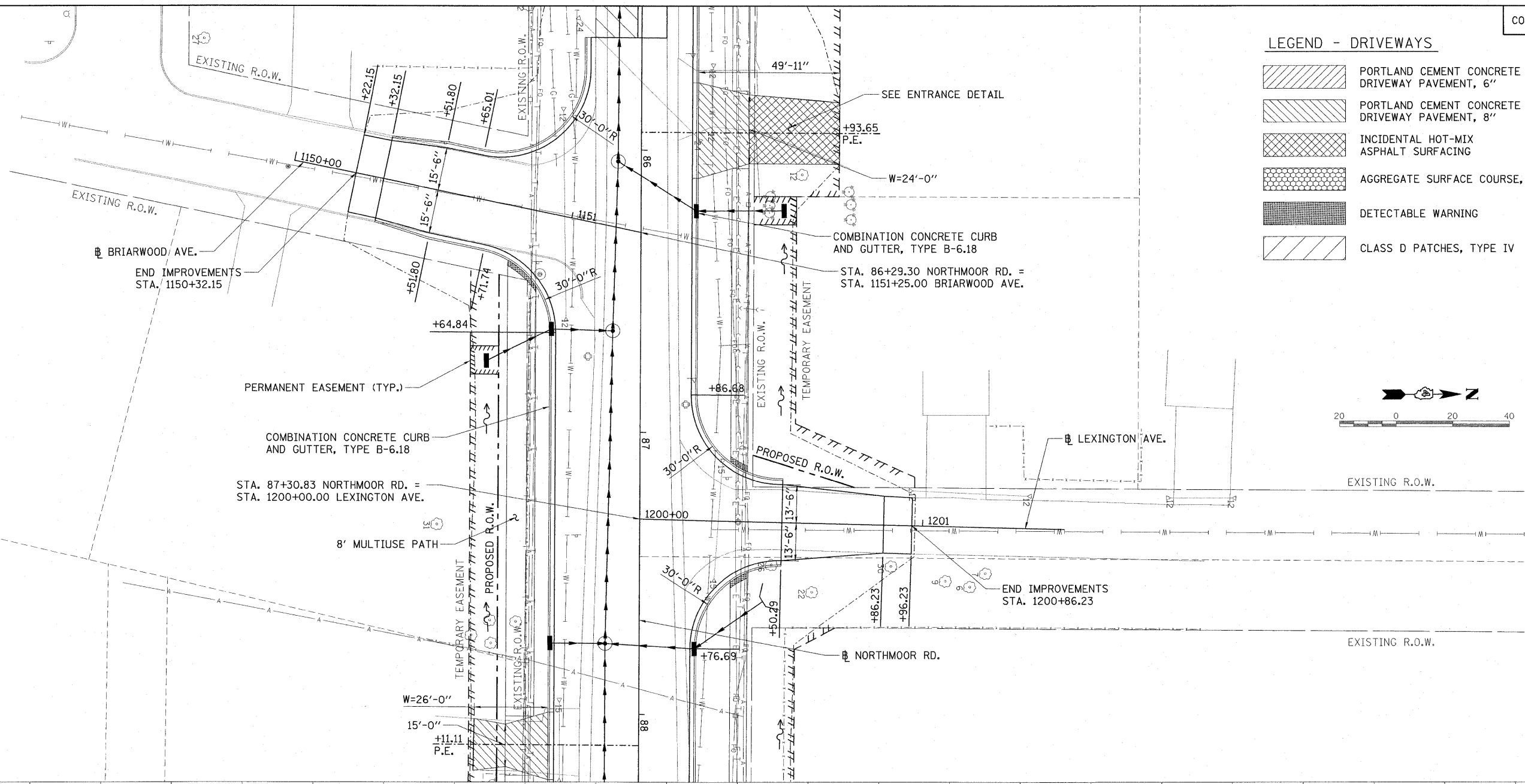
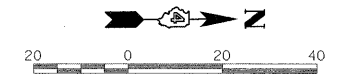


LEGEND - DRIVEWAYS

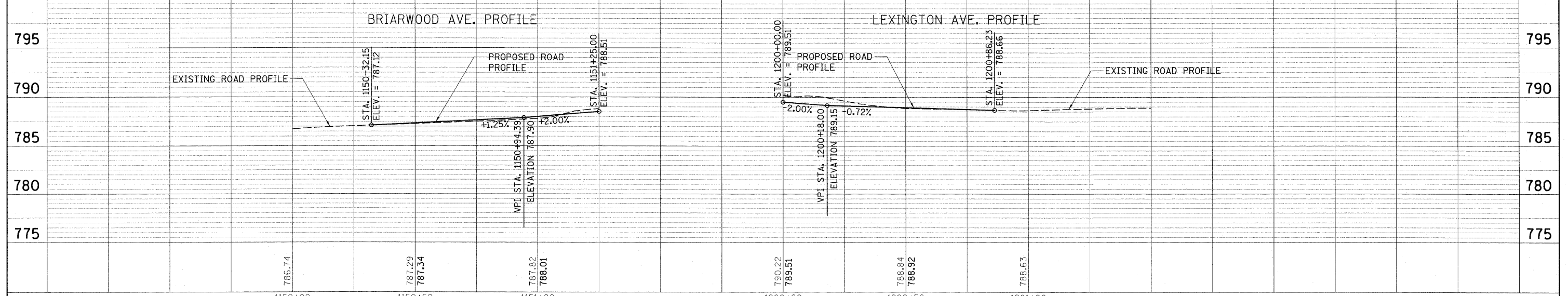
-  PORTLAND CEMENT CONCRETE DRIVEWAY PAVEMENT, 6"
-  PORTLAND CEMENT CONCRETE DRIVEWAY PAVEMENT, 8"
-  INCIDENTAL HOT-MIX ASPHALT SURFACING
-  AGGREGATE SURFACE COURSE, TYPE A
-  DETECTABLE WARNING
-  CLASS D PATCHES, TYPE IV



PLAN	SURVEYED	DATE
	PLOTTED	
	CHECKED	
	BY	
	NO. OF WAY CHECKED	
	CADD FILE NAME	

© Copyright Hanson Professional Services Inc. 2010
HANSON
 Hanson Professional Services Inc.

PROFILE	SURVEYED	DATE
	PLOTTED	
	CHECKED	
	BY	
	NO. OF WAY CHECKED	
	STRUCTURE NOTATIONS CHKD	



FILE NAME =	USER NAME = Ander00846	DESIGNED - MPB	REVISED -	STATE OF ILLINOIS DEPARTMENT OF TRANSPORTATION	BRIARWOOD AVE AND LEXINGTON AVE. PLAN AND PROFILE	F.A. RTE.	SECTION	COUNTY	TOTAL SHEETS	SHEET NO.
1:\09\Jobs\09\0027\CADD\Road\Sheet\c-707b.dgn		DRAWN - RLA	REVISED -			6647	08-00302-00-TL	PEORIA	102	27
PLOT SCALE = 20.0000' / 1"		CHECKED - CAL	REVISED -			6595	09-00047-02-TL			
PLOT DATE = 03/19/2010		DATE - 03/19/10	REVISED -			SCALE: 1"=20'		SHEET NO. OF SHEETS STA. TO STA.		CONTRACT NO. 89523
						FED. ROAD DIST. NO.		ILLINOIS FED. AID PROJECT		M-50931381