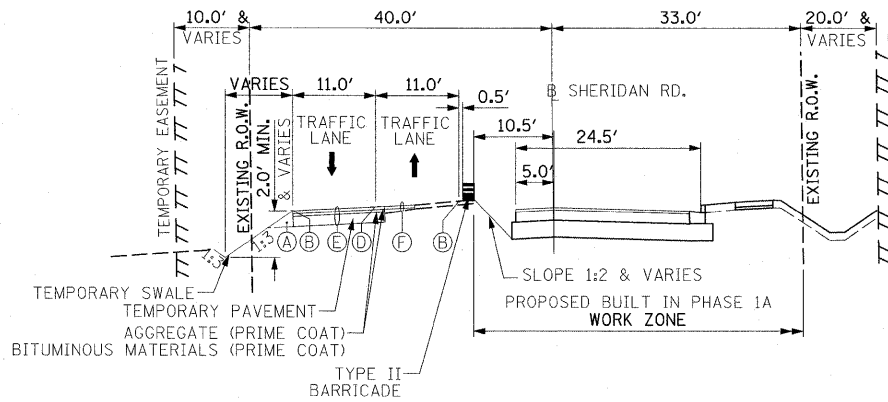


MAINTENANCE OF TRAFFIC TYPICAL SECTION

N. SHERIDAN ROAD-PHASE 1A

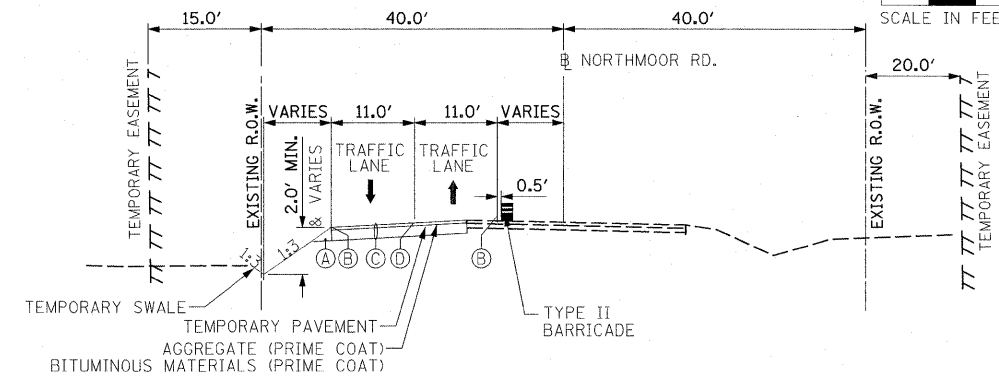
STATION 247+90.2 - STATION 249+25.0
STATION 261+76.8 - STATION 264+29.7



MAINTENANCE OF TRAFFIC TYPICAL SECTION

N. SHERIDAN ROAD-PHASE 1A

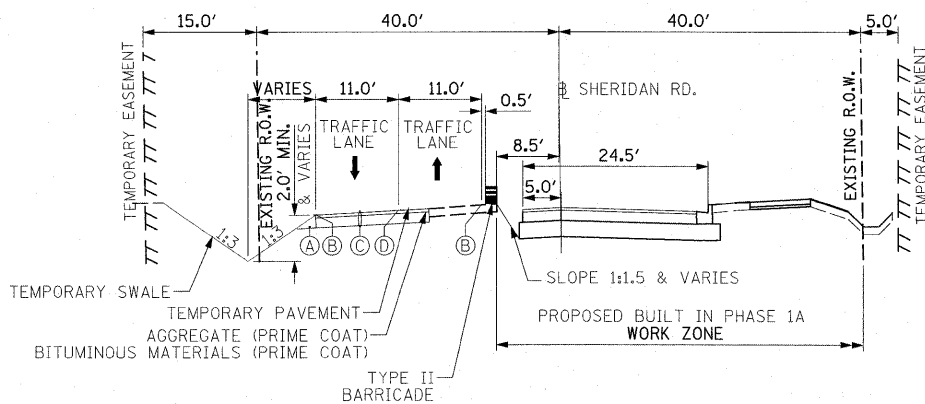
STATION 255+00.4 - STATION 258+00.0



MAINTENANCE OF TRAFFIC TYPICAL SECTION

W. NORTHMOOR ROAD-PHASE 1A

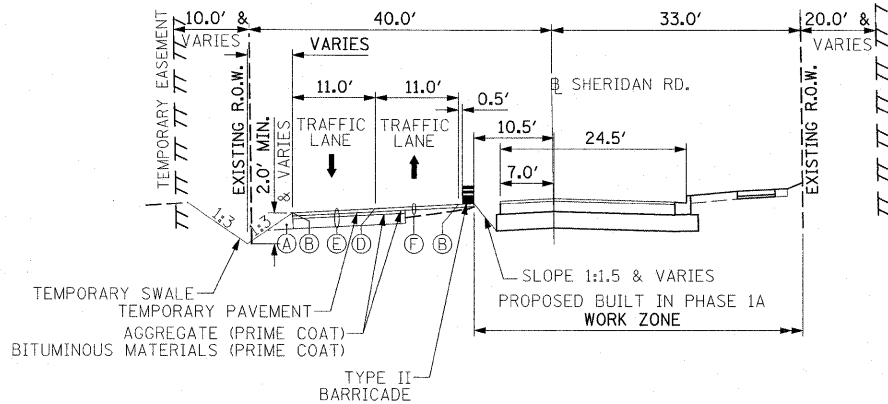
STATION 83+77.4 - STATION 85+60.0
STATION 92+40.0 - STATION 94+95.1



MAINTENANCE OF TRAFFIC TYPICAL SECTION

N. SHERIDAN ROAD-PHASE 1A

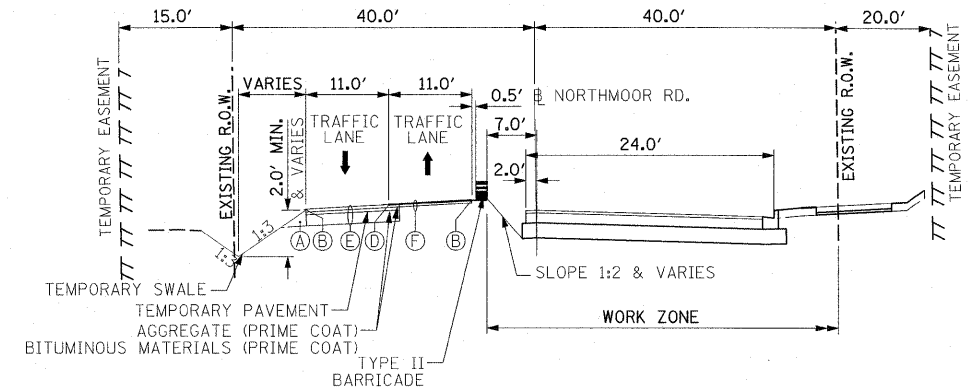
STATION 249+25.0 - STATION 253+14.1
STATION 254+21.8 - STATION 254+70.0



MAINTENANCE OF TRAFFIC TYPICAL SECTION

N. SHERIDAN ROAD-PHASE 1A

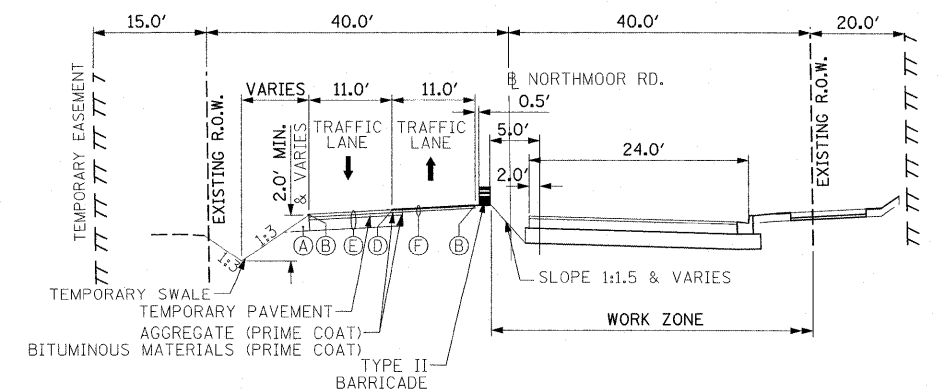
STATION 258+00.0 - STATION 261+76.8



MAINTENANCE OF TRAFFIC TYPICAL SECTION

W. NORTHMOOR ROAD-PHASE 1A

STATION 90+64.9 - STATION 92+40.0



MAINTENANCE OF TRAFFIC TYPICAL SECTION

W. NORTHMOOR ROAD-PHASE 1B

STATION 85+60.0 - STATION 89+88.9

SECTION NOTES:

- (A) COMPACTED EMBANKMENT (COST INCIDENTAL TO EARTH EXCAVATION)
- (B) TEMPORARY PAVEMENT MARKING LINE-SOLID WHITE, 4"
- (C) 261 LB/SY, HMA BINDER COURSE, IL-19.0, N50 ON 8" SUB-BASE GRANULAR MATERIAL, TYPE A
- (D) TEMPORARY PAVEMENT MARKING LINE-SOLID DOUBLE YELLOW, 4"
- (E) 261 LB/SY, HMA BINDER COURSE, IL-19.0, N50 ON 261 LB/SY, HMA BINDER COURSE, IL-19.0, N50 ON 8" SUB-BASE GRANULAR MATERIAL, TYPE A
- (F) 261 LB/SY, HMA BINDER COURSE, IL-19.0, N50 ON EXISTING PAVEMENT MILLED TO 2.25" MAX. PAVEMENT MILLING COST SHALL BE PAID FOR AS HOT-MIX ASPHALT SURFACE REMOVAL, VARIABLE DEPTH

NOTES: 261 LB/SY DETERMINED BASED ON THE APPLICATION RATE OF 116 LB/IN AND 2-1/4" HMA DEPTH.

TEMPORARY PAVEMENT SHALL BE PLACED SUCH THAT 2% CROSS SLOPE IS MAINTAINED ALONG THE TRAVELED WAY

INFRASTRUCTURE ENGINEERING | INCORPORATED
456 Fulton Street | Suite 104 | Peoria, IL 61602
P 309.637.9200 | F 309.637.9210 | www.infrastructure-eng.com

FILE NAME = I:\09Jobs\09L0027\CADD\Road\Sheet\02_2206_S1.MOT_Type.dgn	USER NAME = Ander-00846	DESIGNED - LC	REVISED -	STATE OF ILLINOIS DEPARTMENT OF TRANSPORTATION	NORTHMOOR ROAD STAGE I IMPROVEMENT TYPICAL SECTIONS PHASE 1	F.A.U. RTE. = 6647	SECTION = 08-00302-00-TL	COUNTY = PEORIA	TOTAL SHEETS = 102	SHEET NO. = 30
PLOT SCALE = 50.0000' / in.	CHECKED = DO/CF	DATE = 03-18-10	REVISED -			09-00047-02-TL	CONTRACT NO. 89523			
PLOT DATE = 03\22\2010	DATE = 03-18-10	REVISED -				FED. ROAD DIST. NO.	ILLINOIS FED. AID PROJECT M-5093(138)			