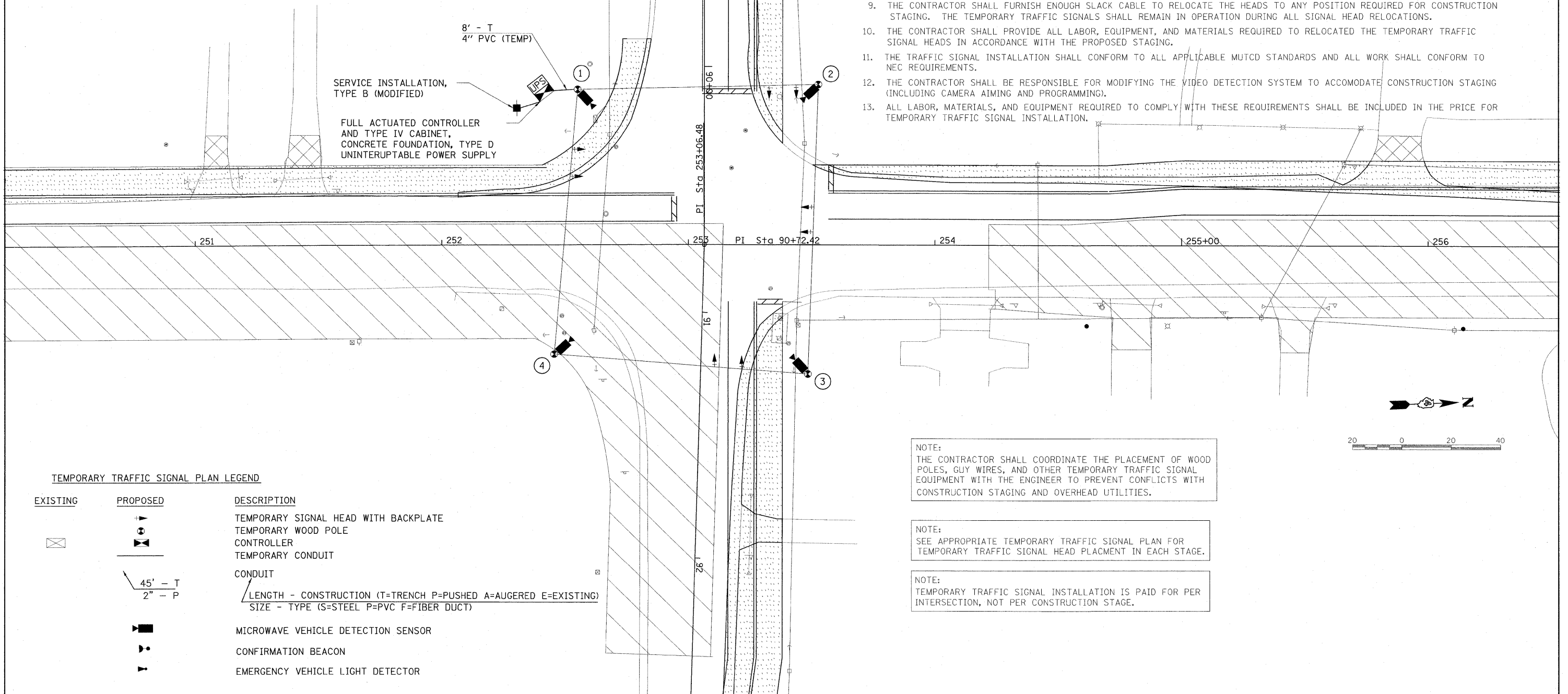


TEMPORARY WOOD POLES			
POLE I.D.	CONTROL LINE	STATION	OFFSET
①	NOR_PAL	90+09	51' LT
②	NOR_PAL	90+07	46' LT
③	NOR_PAL	91+23	43' LT
④	NOR_PAL	91+19	60' RT

SCHEDULE OF QUANTITIES		
ITEM	UNIT	QUANTITY
TEMPORARY TRAFFIC SIGNAL INSTALLATION	EACH	1.0

1. THE CONTRACTOR SHALL PROVIDE AND INSTALL EQUIPMENT WITH RESPECT TO THE TEMPORARY TRAFFIC SIGNAL INSTALLATION. THIS SHALL INCLUDE ALL CABLES, SIGNAL HEADS, CONDUIT, WOOD POLES, GUY WIRE ASSEMBLIES, AND ALL OTHER EQUIPMENT REQUIRED FOR THE INSTALLATION. PROPOSED PERMANENT SERVICE INSTALLATION AND CONTROLLER SHALL BE PAID BY SEPARATE PAY ITEMS.
2. A WAVETRONIX VEHICLE VIDEO DETECTION SYSTEM SHALL BE USED TO PROVIDE DETECTION FOR THE TEMPORARY TRAFFIC SIGNAL INSTALLATION. THE CONTRACTOR SHALL FURNISH A WAVETRONIX DETECTION SYSTEM (SENSORS WITH BRACKETS AND PROCESSOR) FOR USE WITH TEMPORARY INSTALLATION. THE CONTRACTOR SHALL FURNISH ALL CABLE, HARDWARE, BRACKETS AND ACCESSORIES REQUIRED FOR A COMPLETELY FUNCTIONAL SYSTEM. THE SYSTEM SHALL BE DELIVERED TO THE CITY AT THE END OF USE.
3. THE PROPOSED CONTROLLER SHALL BE USED AND PROGRAMMED FOR TEMPORARY SIGNAL CONDITIONS.
4. ALL TRAFFIC SIGNAL EQUIPMENT SCHEDULED FOR REMOVAL MAY BE USED FOR TEMPORARY TRAFFIC SIGNALS. ANY MAINTENANCE OF THIS EQUIPMENT WHEN USED FOR TEMPORARY TRAFFIC SIGNALS SHALL BE THE RESPONSIBILITY OF THE CONTRACTOR. ALL EQUIPMENT (EXISTING AND PROVIDED BY THE CITY) SHALL BE DELIVERED IN GOOD WORKING CONDITION UPON REMOVAL OF THE TEMPORARY TRAFFIC SIGNAL INSTALLATION.
5. NEW AERIAL TRAFFIC SIGNAL CABLE SHALL BE FURNISHED AND INSTALLED AS SHOWN ON THE PLAN SHEETS. ALL EXISTING TRAFFIC SIGNAL CABLE WILL BE REMOVED. EXISTING TRAFFIC SIGNAL HEADS MAY BE USED IN THE TEMPORARY INSTALLATION.
6. THE TEMPORARY TRAFFIC SIGNAL SPAN WIRES AND CABLES SHALL BE ATTACHED TO THE WOOD POLES IN A MANNER APPROVED BY THE ENGINEER. ALL CABLES SHALL MAINTAIN A 18 FT. MINIMUM CLEARANCE ABOVE THE HIGHEST POINT OF THE ROADWAY.
7. ALL TRAFFIC SIGNAL SECTIONS SHALL HAVE 12" LENSES.
8. THE TEMPORARY TRAFFIC SIGNAL HEADS SHALL BE PLACED AS INDICATED ON THE PLANS OR DIRECTED BY THE ENGINEER.
9. THE CONTRACTOR SHALL FURNISH ENOUGH SLACK CABLE TO RELOCATE THE HEADS TO ANY POSITION REQUIRED FOR CONSTRUCTION STAGING. THE TEMPORARY TRAFFIC SIGNALS SHALL REMAIN IN OPERATION DURING ALL SIGNAL HEAD RELOCATIONS.
10. THE CONTRACTOR SHALL PROVIDE ALL LABOR, EQUIPMENT, AND MATERIALS REQUIRED TO RELOCATE THE TEMPORARY TRAFFIC SIGNAL HEADS IN ACCORDANCE WITH THE PROPOSED STAGING.
11. THE TRAFFIC SIGNAL INSTALLATION SHALL CONFORM TO ALL APPLICABLE MUTCD STANDARDS AND ALL WORK SHALL CONFORM TO NEC REQUIREMENTS.
12. THE CONTRACTOR SHALL BE RESPONSIBLE FOR MODIFYING THE VIDEO DETECTION SYSTEM TO ACCOMMODATE CONSTRUCTION STAGING (INCLUDING CAMERA AIMING AND PROGRAMMING).
13. ALL LABOR, MATERIALS, AND EQUIPMENT REQUIRED TO COMPLY WITH THESE REQUIREMENTS SHALL BE INCLUDED IN THE PRICE FOR TEMPORARY TRAFFIC SIGNAL INSTALLATION.



© Copyright Hanson Professional Services Inc. 2019  
**HANSON**  
 Hanson Professional Services Inc.

TEMPORARY TRAFFIC SIGNAL PLAN LEGEND

EXISTING	PROPOSED	DESCRIPTION
		TEMPORARY SIGNAL HEAD WITH BACKPLATE
		TEMPORARY WOOD POLE
		CONTROLLER
		TEMPORARY CONDUIT
		CONDUIT
		LENGTH - CONSTRUCTION (T=TRENCH P=PUSHED A=AUGERED E=EXISTING) SIZE - TYPE (S=STEEL P=PVC F=FIBER DUCT)
		MICROWAVE VEHICLE DETECTION SENSOR
		CONFIRMATION BEACON
		EMERGENCY VEHICLE LIGHT DETECTOR

NOTE:  
THE CONTRACTOR SHALL COORDINATE THE PLACEMENT OF WOOD POLES, GUY WIRES, AND OTHER TEMPORARY TRAFFIC SIGNAL EQUIPMENT WITH THE ENGINEER TO PREVENT CONFLICTS WITH CONSTRUCTION STAGING AND OVERHEAD UTILITIES.

NOTE:  
SEE APPROPRIATE TEMPORARY TRAFFIC SIGNAL PLAN FOR TEMPORARY TRAFFIC SIGNAL HEAD PLACEMENT IN EACH STAGE.

NOTE:  
TEMPORARY TRAFFIC SIGNAL INSTALLATION IS PAID FOR PER INTERSECTION, NOT PER CONSTRUCTION STAGE.

