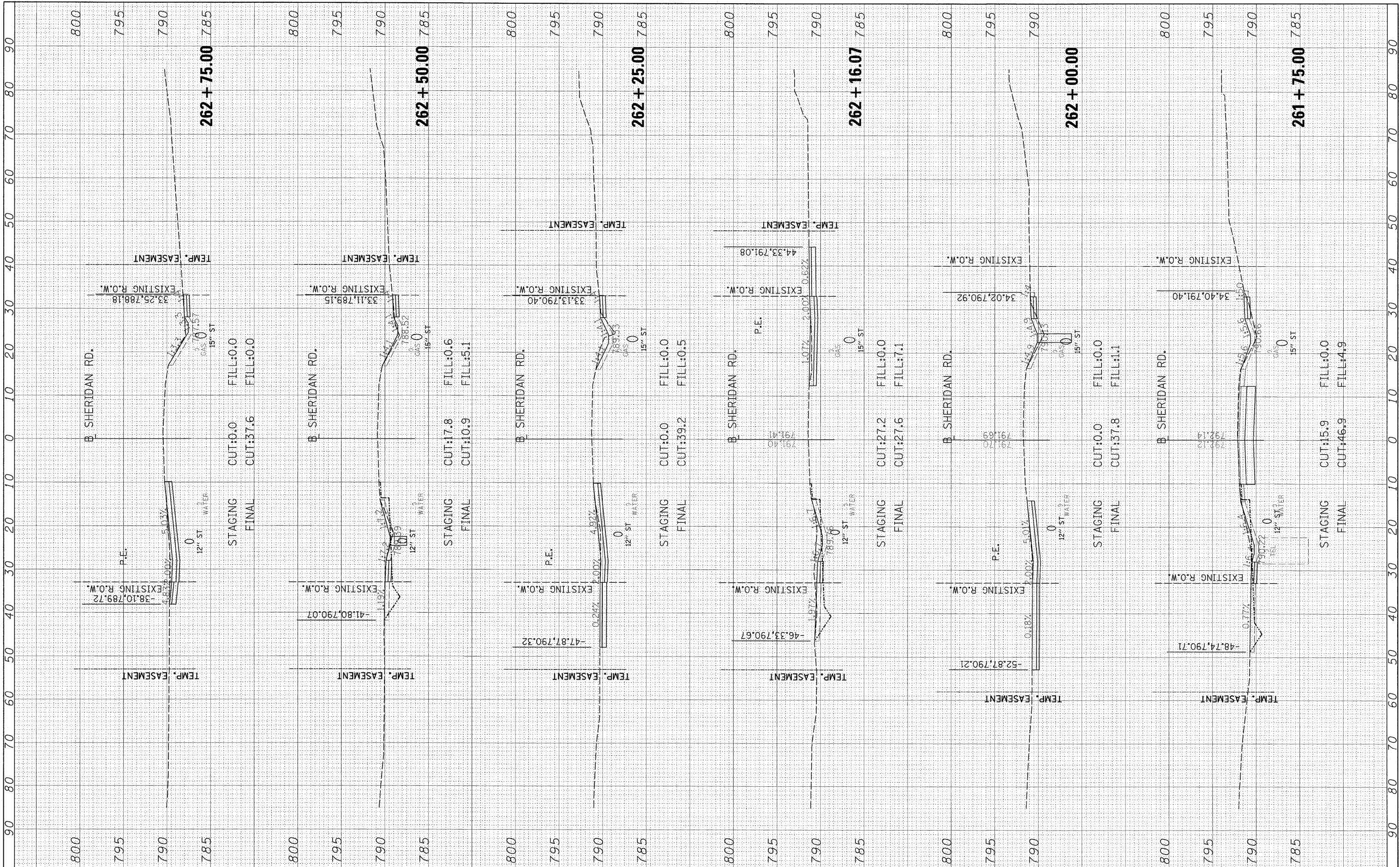


BY	DATE
FINAL SURVEY	
NOTED	
NO. CHECKED	

BY	DATE
ORIGINAL SURVEY	
NOTED	
NO. CHECKED	



FILE NAME = I:\09\Jobs\09L0027\CADD\Road\Sheet\c-301s.dwg

USER NAME = Ander00046

DESIGNED -
DRAWN -
CHECKED -
DATE -

REVISED -
REVISED -
REVISED -
REVISED -

**STATE OF ILLINOIS
DEPARTMENT OF TRANSPORTATION**

**SHERIDAN ROAD
CROSS SECTIONS**

SCALE: SHEET NO. OF SHEETS STA. 261+75.00 TO STA. 262+75.00

F.A. RTE.	SECTION	COUNTY	TOTAL SHEETS	SHEET NO.
6647	08-00302-00-TL	PEORIA	102	99
6595	09-00047-02-TL			CONTRACT NO. 89523

ILLINOIS FED. AID PROJECT ARA-M-5093(139)