

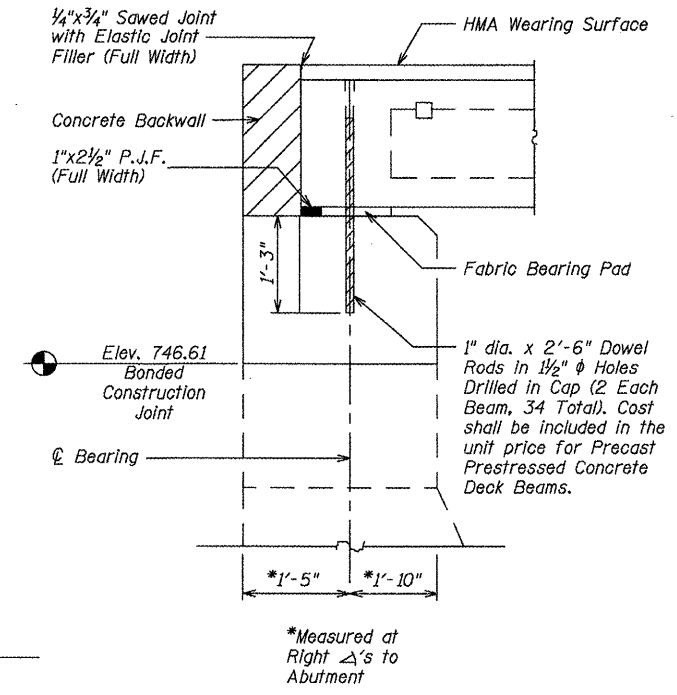
STATE OF ILLINOIS
DEPARTMENT OF TRANSPORTATION

F.A.U. RTE.	SECTION	COUNTY	TOTAL SHEETS	SHEET NO.
6791	07-00401-25-BR	KNOX	18	14
STA. 44+90.00		TO STA. 47+77.20		
FED. ROAD DIST. NO. -		ILLINOIS	FED. AID PROJECT	
BRIDGE SHEET 10 of 14 SHEETS		BRM-5025(045) CONTRACT NO. 89557		

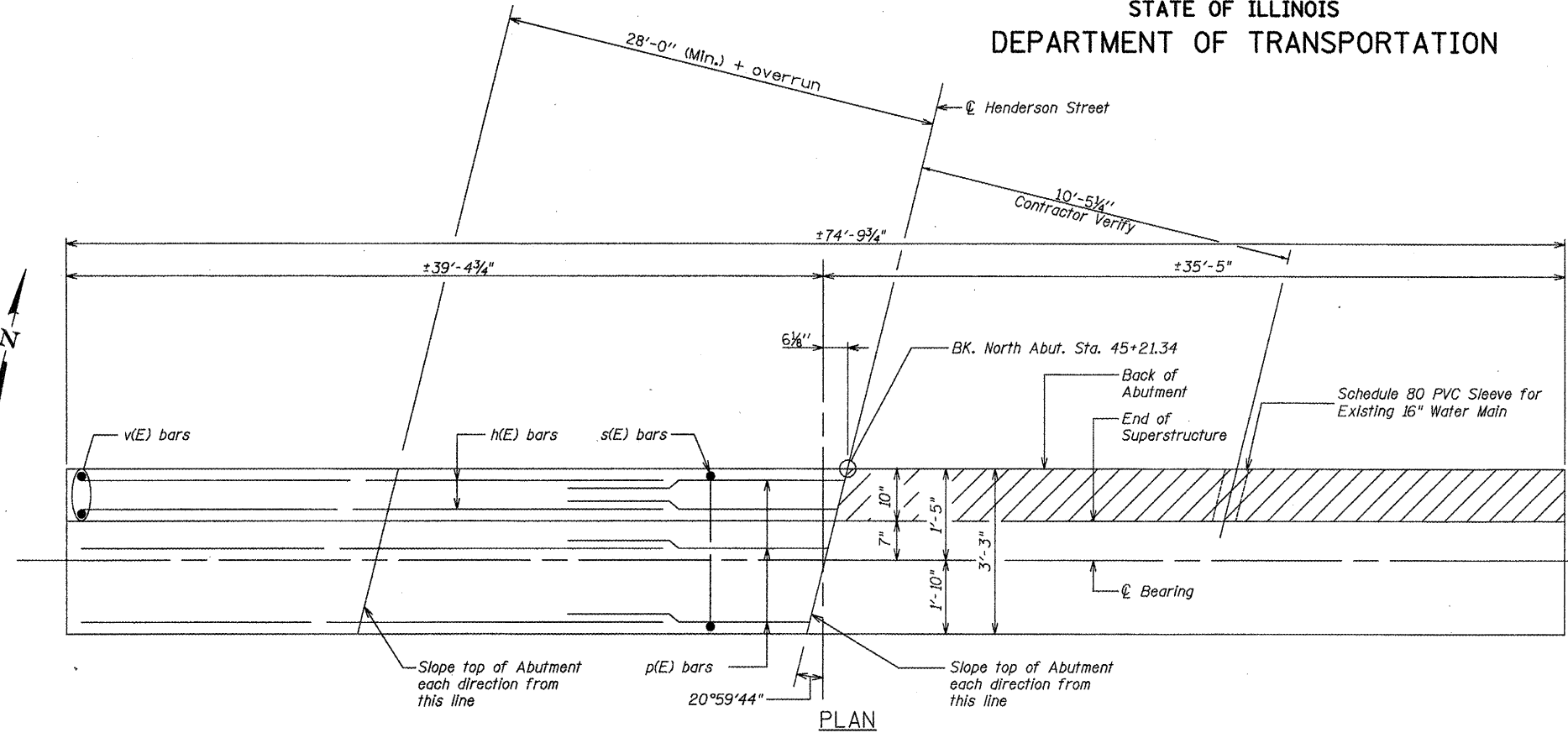
BILL OF MATERIALS

BAR	NO.	SIZE	LENGTH	SHAPE
n(E)	18	#4	25'-6"	—
p(E)	27	#7	26'-3"	—
s(E)	40	#4	7'-7"	□
v(E)	150	#4	3'-8"	—
Concrete Structures		CU YD	11.7	
Reinforcement Bars, Epoxy Coated		POUND	2330	
Expansion Bolts 3/4 Inch		EACH	148	
Structure Excavation		CU YD	17.5	

Reinforcement Bars Designated (E) Shall Be Epoxy Coated.



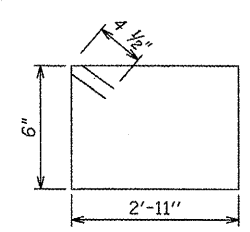
SECTION THRU ABUTMENT



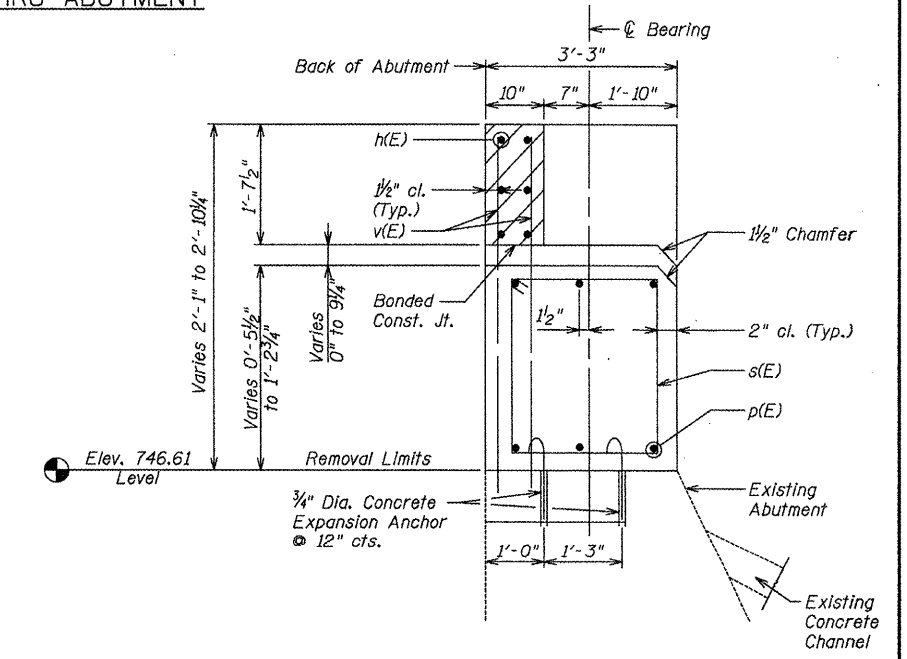
PLAN

Min. Bar Laps

#4	1'-4"
#7	2'-8"

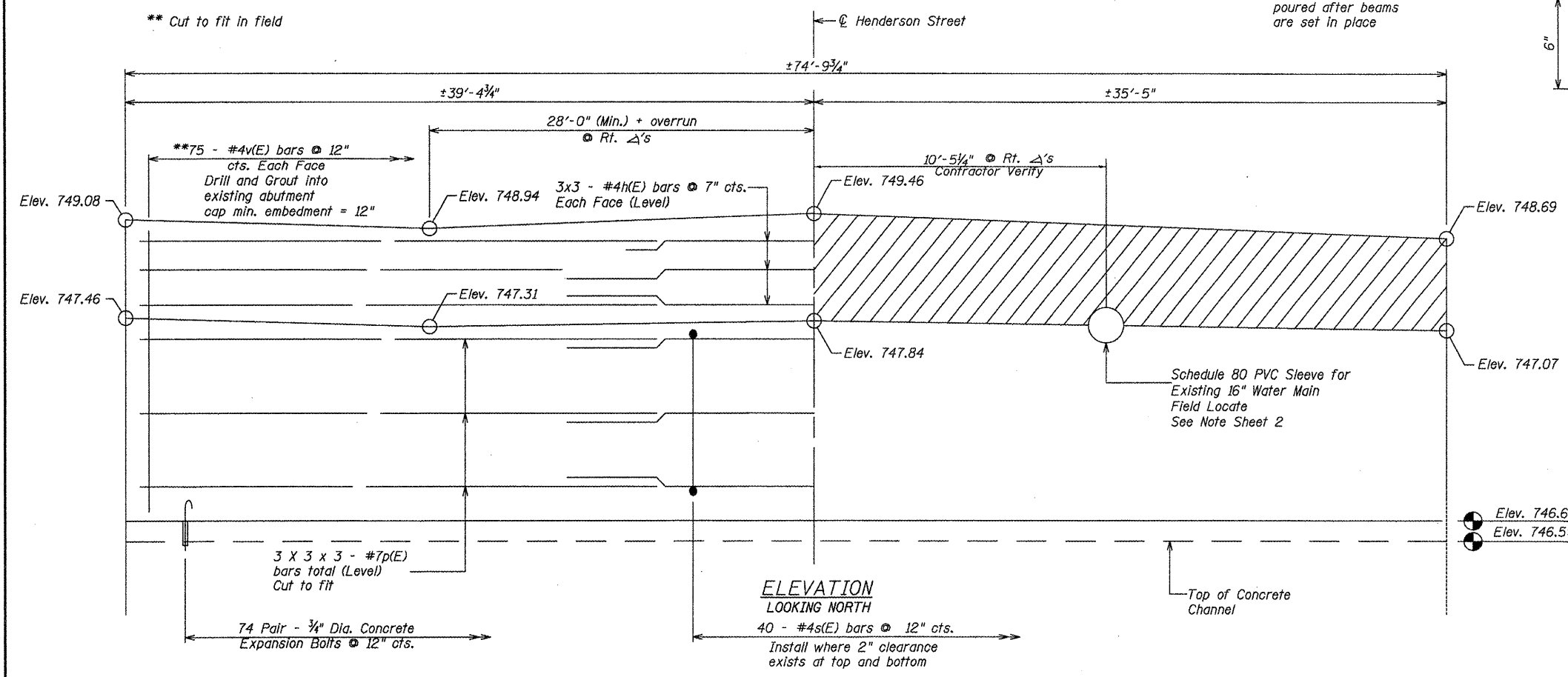


Bar s(E)



SECTION THRU TOP OF ABUTMENT

NOTE: Hatched area to be poured after beams are set in place



ELEVATION
LOOKING NORTH

ILLINOIS DEPARTMENT OF TRANSPORTATION
NORTH ABUTMENT
S. HENDERSON STREET OVER CEDAR CREEK
SECTION 07-00401-25-BR
CITY OF GALESBURG, KNOX COUNTY
STA. 45+55.80 S.N. 048-0024

SCALE: VERT. NONE, HORIZ. NONE. DATE: 08/28/2009
DRAWN BY: BCB, DESIGNED BY: PETERSON, CHECKED BY: PETERSON

Bruner, Cooper & Zuck, Inc.
Consulting Engineers Structural Engineers Land Surveyors
188 East Simons Street Galesburg, Illinois 62402
Phone: (309) 343-9282 Fax: (309) 343-9232 E-mail: bcz@bczengr.com

JOB NO. 290067 FILE NAME: NG_ABTMNT.dwg