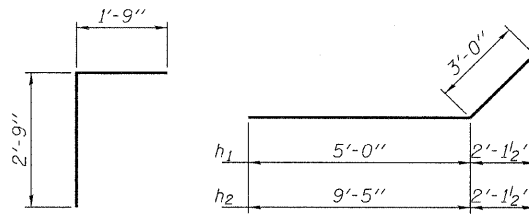
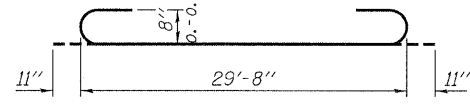


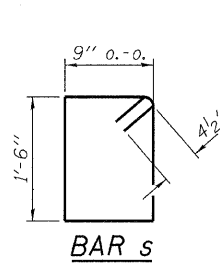
Coarse aggregate full length of both headwalls. Cost included with Concrete Box Culverts.

Coarse aggregate full length of both headwalls. Cost included with Concrete Box Culverts.

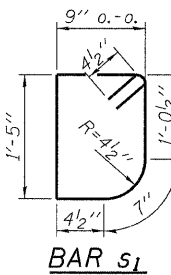


BAR d

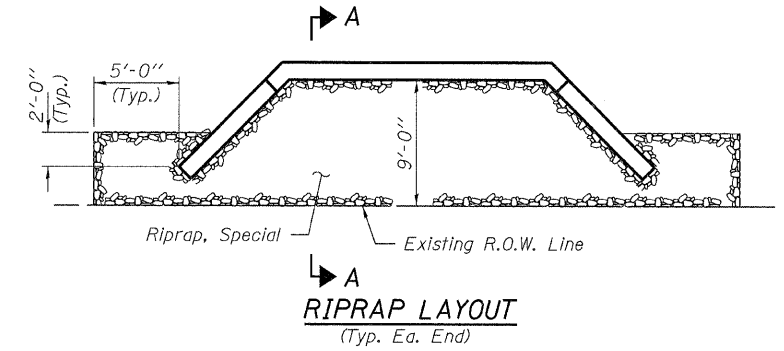
BARS h₁ & h₂



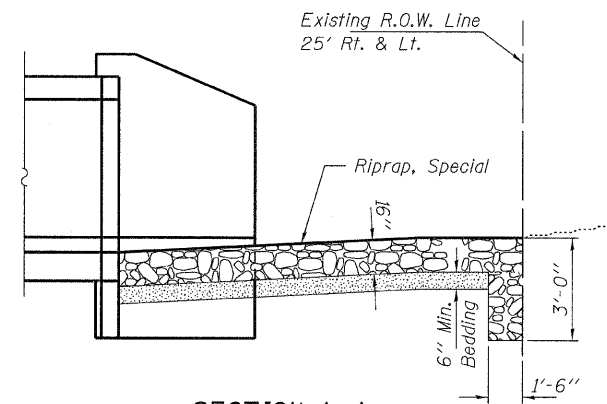
BAR s



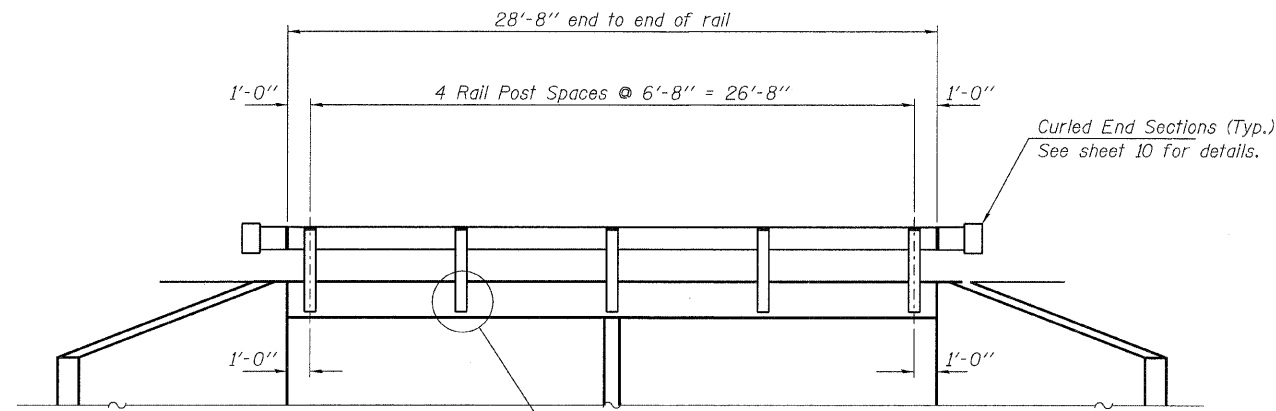
BAR s₁



RIPRAP LAYOUT
(Typ. Ea. End)

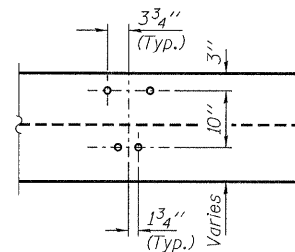


SECTION A-A

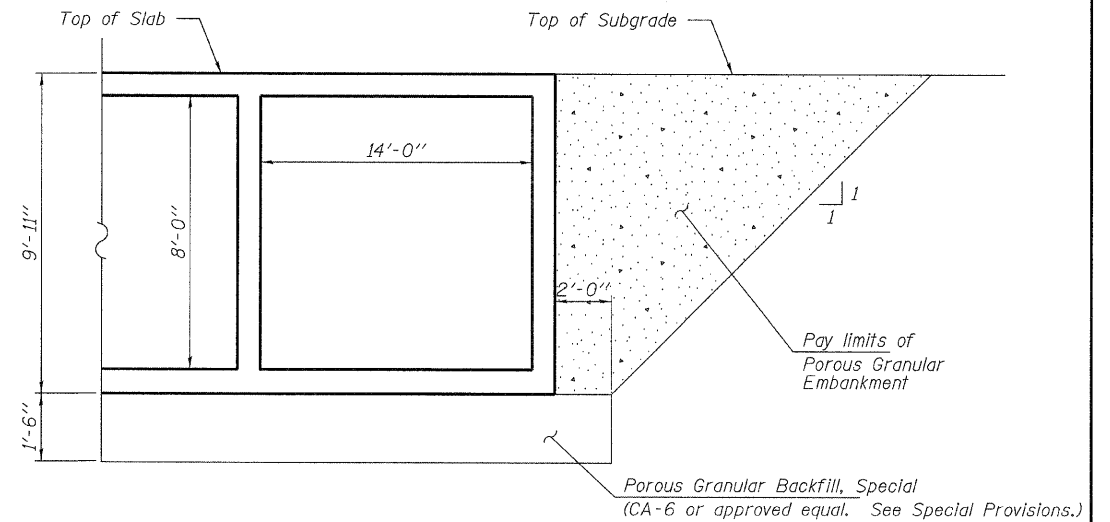


ELEVATION

Showing Rail Post Spaces
See sheet 10 for Railing Details.



DETAIL A



WATERWAY INFORMATION

Flood	Freq. Yr.	Q C.F.S.	Opening Sq. Ft.		Natural H.W.E.	Head - Ft.		Headwater El.	
			Exist.	Prop.		Exist.	Prop.	Exist.	Prop.
Design	10	590	160	210	665.60	0.30	0.25	665.90	665.85
Base	100	1090	190	220	665.80	0.41	0.38	666.21	666.18
Max. Calc.	500	1500	190	220	667.05	0.42	0.36	667.47	667.41

Existing Low Grade Elev. 666.4 @ Sta. 12+00
Proposed Low Grade Elev. 666.4 @ Sta. 12+00

10 Year Velocity through Existing Bridge = 3.7 fps 10 Year Velocity through Proposed Bridge = 2.8 fps

ARCHIE CREEK
BUILT 20__ BY
VERMILION COUNTY
SEC. 08-17127-00-BR
SIDELL ROAD DISTRICT
STR. NO. 092-5025
LOADING HL-93

NAME PLATE
See Std. 515001

DESIGNED - A.S.L.
CHECKED - S.W.M.
DRAWN - D.A.B.
CHECKED - S.W.M.

HAMPTON, LENZINI AND RENWICK, INC.
CIVIL ENGINEERS - STRUCTURAL ENGINEERS - LAND SURVEYORS
3085 STEVENSON DRIVE, SUITE 201
SPRINGFIELD, ILLINOIS 62703
217.546.3400 www.hlrengineering.com

184.000959
ILLINOIS PROFESSIONAL DESIGN FIRM LS / PE / SE CORPORATION

PROJECT NUMBER: 09.0268.130 DATE: 02/05/10

T.R.	SECTION	COUNTY	TOTAL SHEETS	SHEET NO.
58	08-17127-00-BR	VERMILION	10	9
SIDELL ROAD DISTRICT		CONTRACT NO. 91438		
FED. ROAD DIST. NO.		ILLINOIS FED. AID PROJECT BROS-0183(304)		

**CULVERT DETAILS
STRUCTURE NO. 092-5025**