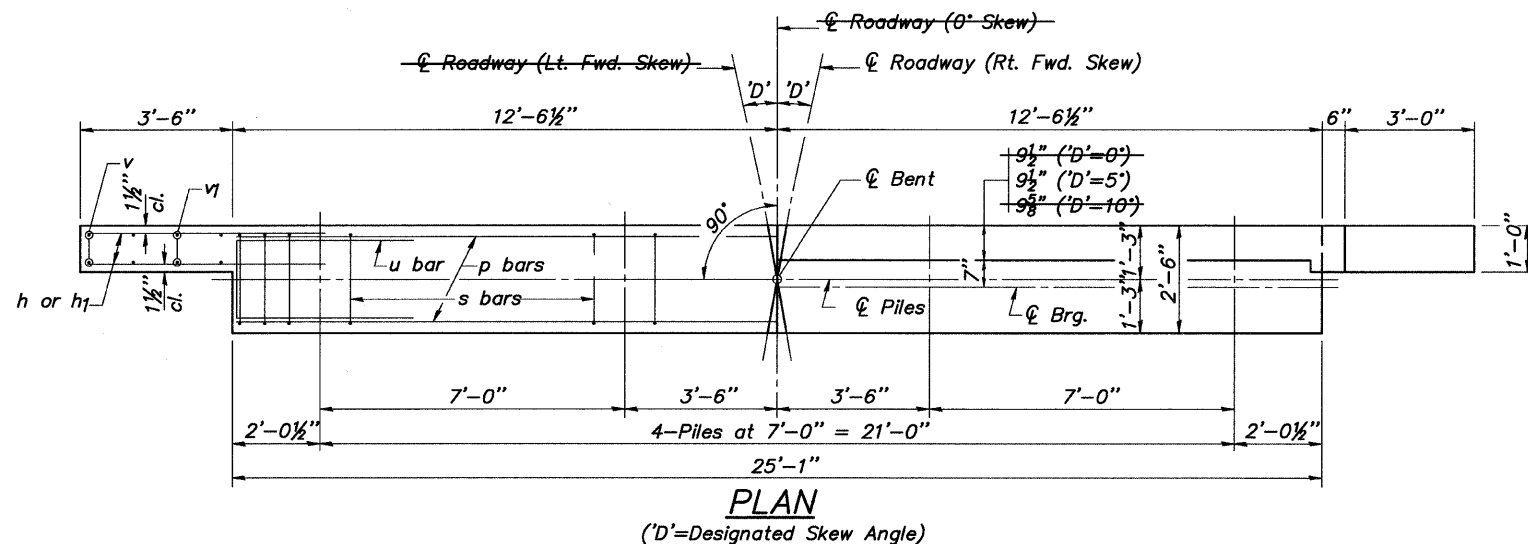
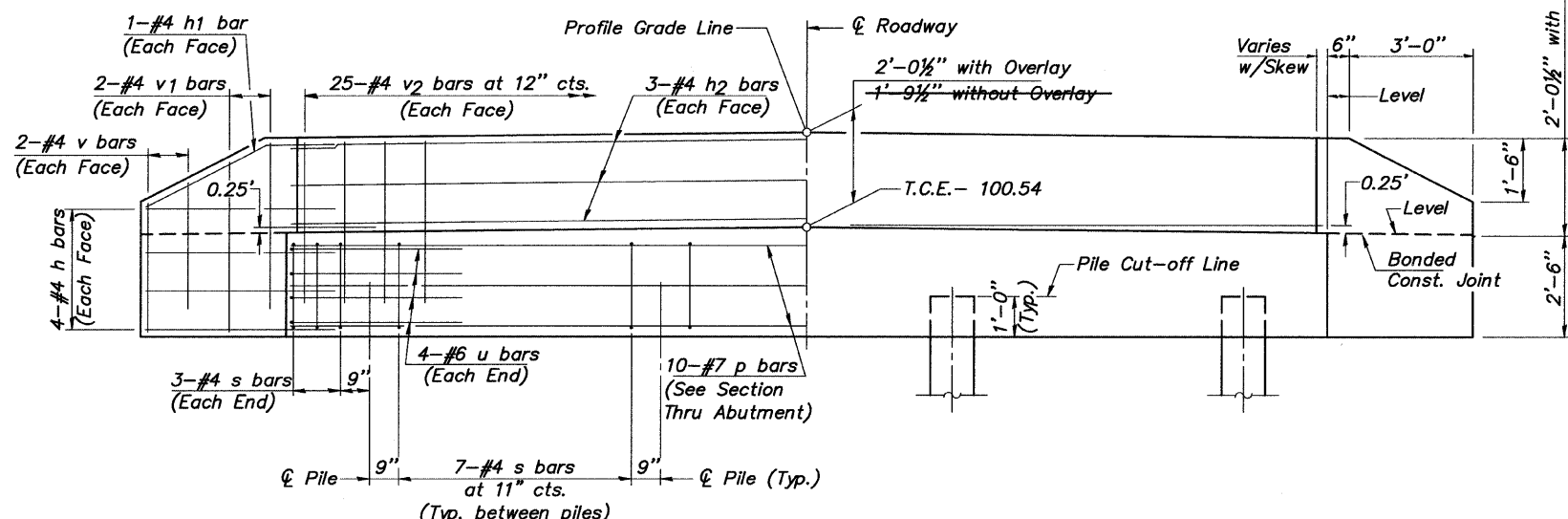


COUNTY	RD. DIST.	SECTION	SHT. NO.
ADAMS	FALL CREEK	09-08111-00-BR	12 OF 14
P.P.C. DECK BEAMS PILE BENT ABUTMENT			

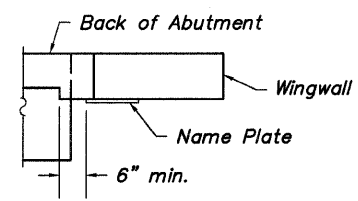
BRIDGE SHEET 5 OF 7



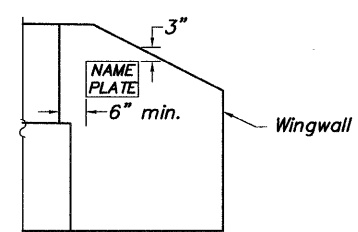
PLAN
(D'=Designated Skew Angle)



ELEVATION



PLAN



ELEVATION

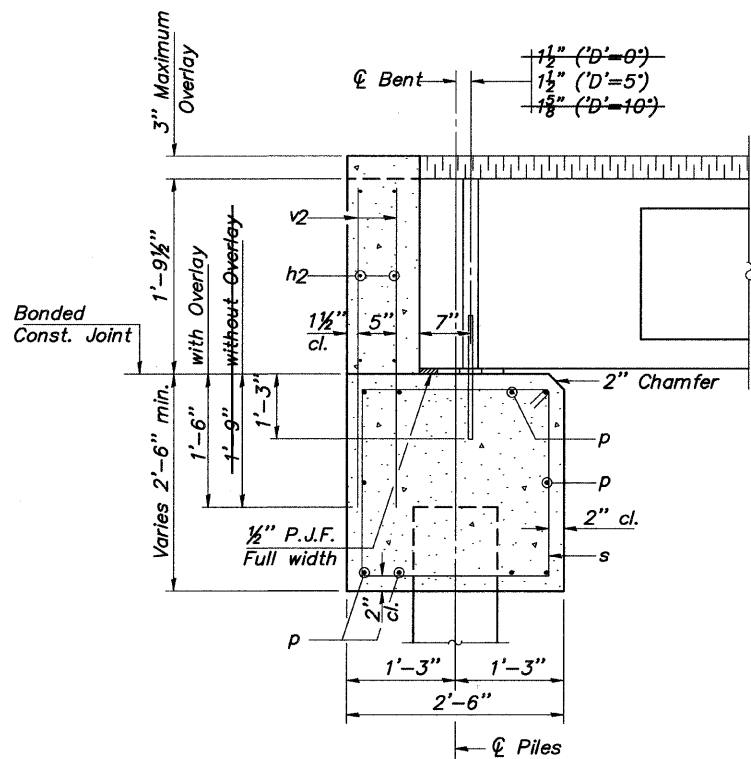
LOCATION OF NAME PLATE

NOTES

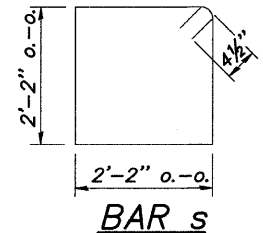
1. The Backwall and the portion of the Wingwalls above the bonded construction joint shall be cast against the in-place beam.
2. Reinforcement bars shall conform to the requirements of ASTM A706, Grade 60.
3. Space reinforcement in cap to miss anchor bolts.

PILE DATA (2 ABUTMENTS)

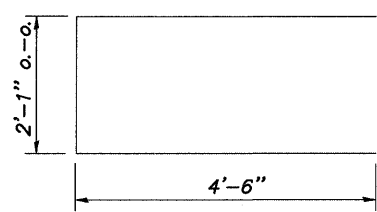
TYPE 12" METAL SHELL (0.179" WALL)
 NOMINAL REQUIRED BEARING 160 kips
 FACTORED RESISTANCE AVAILABLE 80 kips
 ESTIMATED LENGTH BENT #1- 67 FEET
 BENT #2- 67 FEET
 NUMBER REQUIRED- 8 (INCLUDES 1 TEST PILE IN BENT #1)
 THE TEST PILE(S) SHALL BE DRIVEN TO 110% OF THE NOMINAL REQUIRED BEARING INDICATED IN THE PILE INFORMATION DATA.



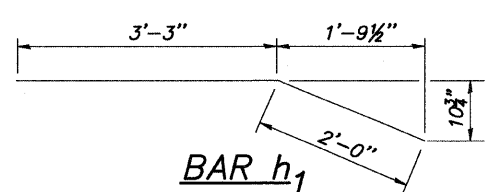
SECTION THRU ABUTMENT
(At Right Angles)



BAR s



BAR u



BAR h1

DESIGN STRESSES

f'c = 3,500 psi
 fy = 60,000 psi

BILL OF MATERIAL FOR ONE ABUTMENT

Bar	No.	Size	Length	Shape
h	16	#4	5'-0"	—
h 1	4	#4	5'-3"	—
h 2	6	#4	24'-9"	—
p	10	#7	24'-9"	—
s	27	#4	9'-5"	□
u	8	#6	11'-1"	□
v	8	#4	2'-8"	—
v 1	8	#4	3'-8"	—
v 2	50	#4	3'-5"	—
Concrete Structures			8.6 Cu. Yds.	
Reinforcement Bars			1120 Lb.	

P.P.C. DECK BEAM PILE BENT ABUTMENT
 24' RDWY. | 21" BMS. | D'=0; 5° OR 10°
 STRUCTURE NO. 001-3430
 HARKNESS CREEK
 ADAMS COUNTY
 FALL CREEK SEC. 09-08111-00-BR
 STATION 2+61.20