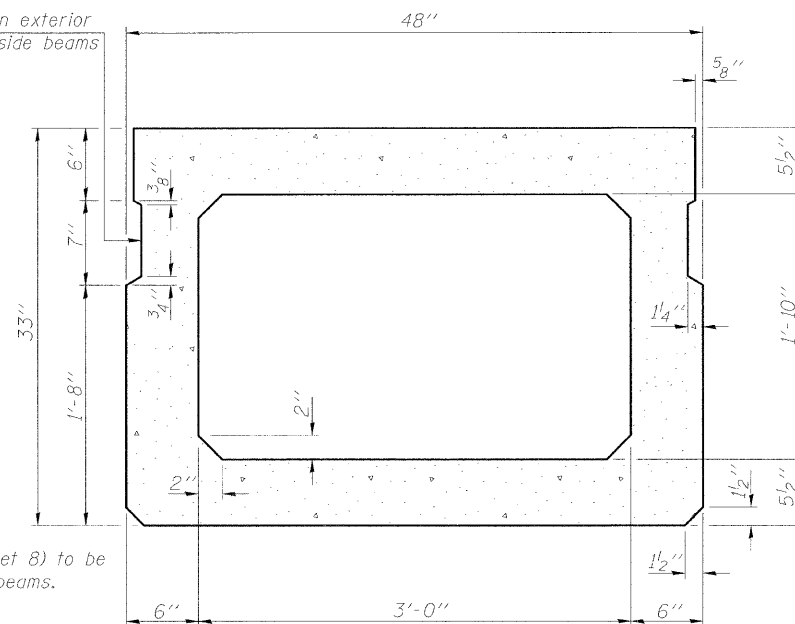
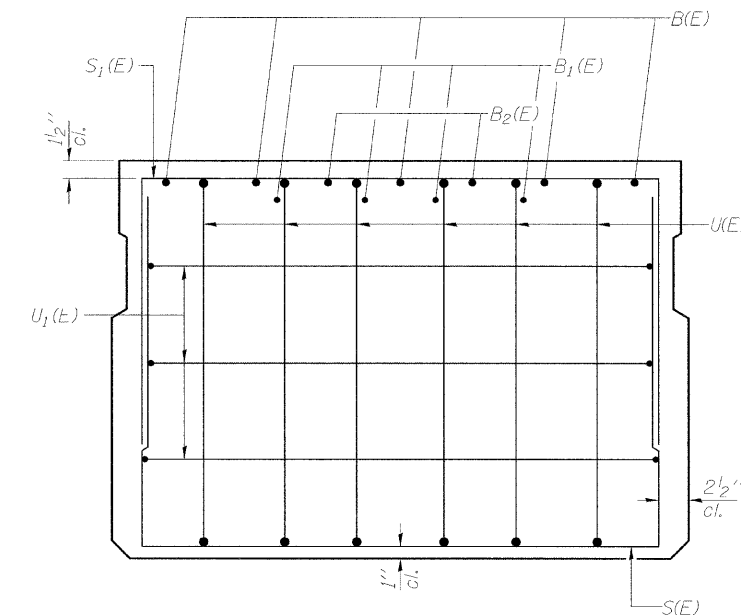


SECTION C-C

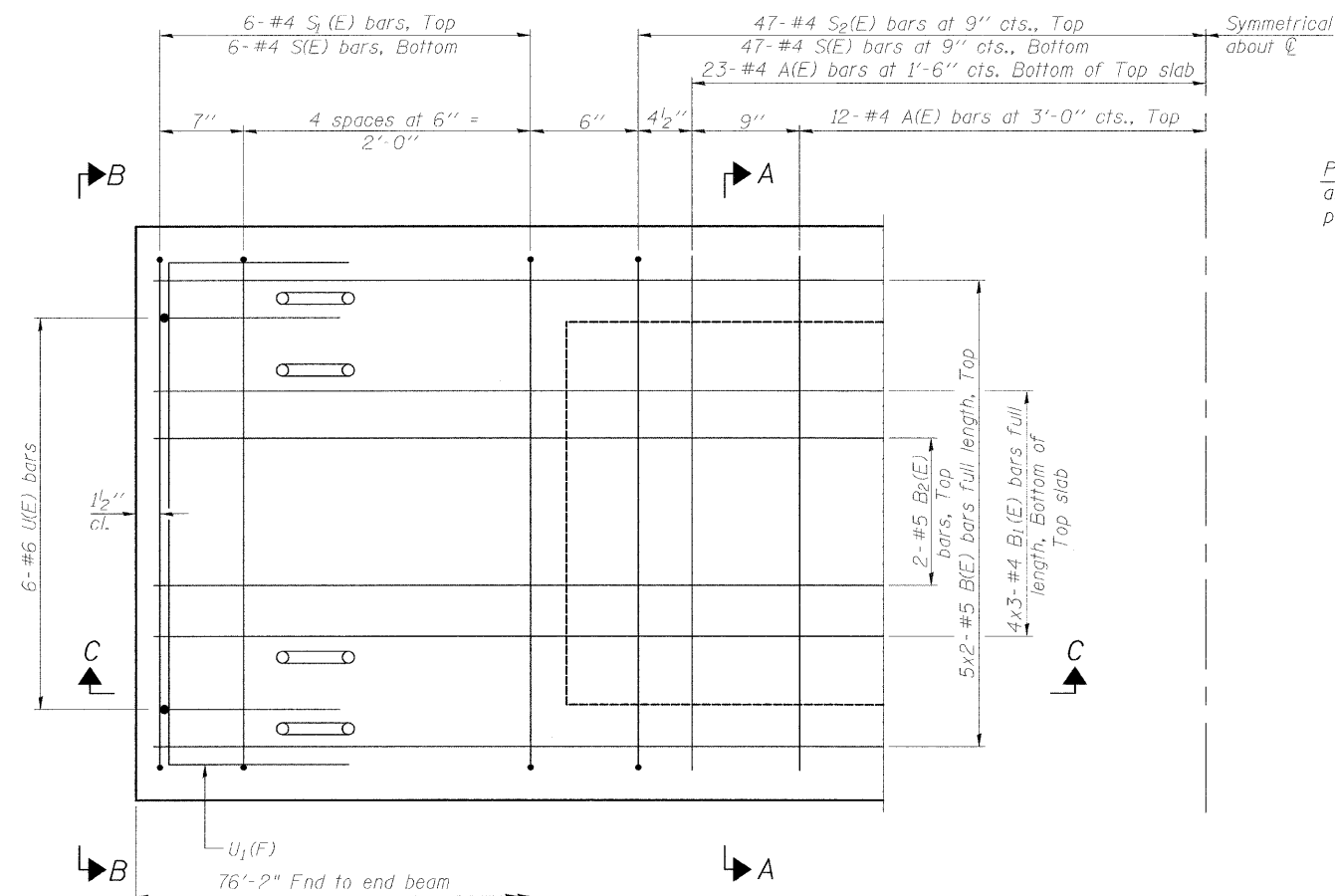
\*Omit key on exterior face of outside beams



\*Rail post anchor devices (See Sheet 8) to be cast into exterior face of outside beams.

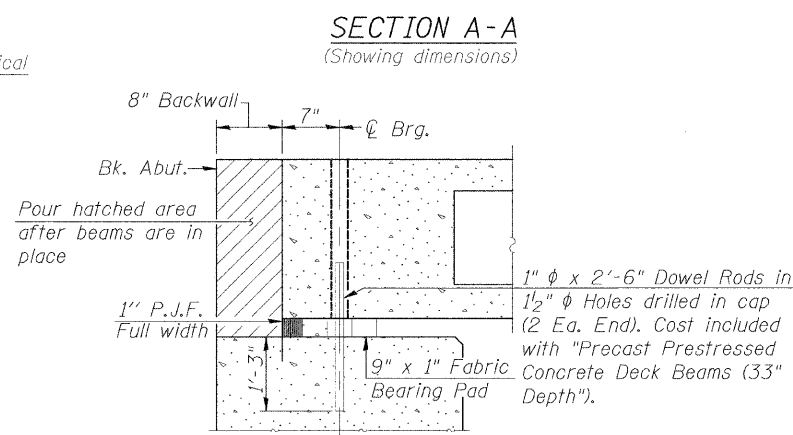


VIEW B-B



PLAN VIEW

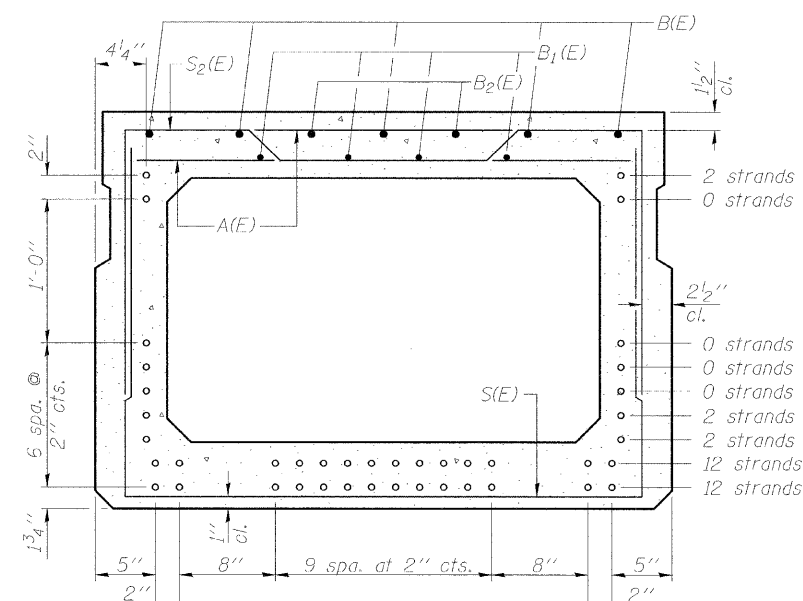
Note: Spacing of S1(E) and S2(E) bars may be adjusted up to 4" in the immediate area of the transverse tie diaphragms to miss the block outs for the transverse ties.



SECTION THRU ABUTMENT (At Right Angles)

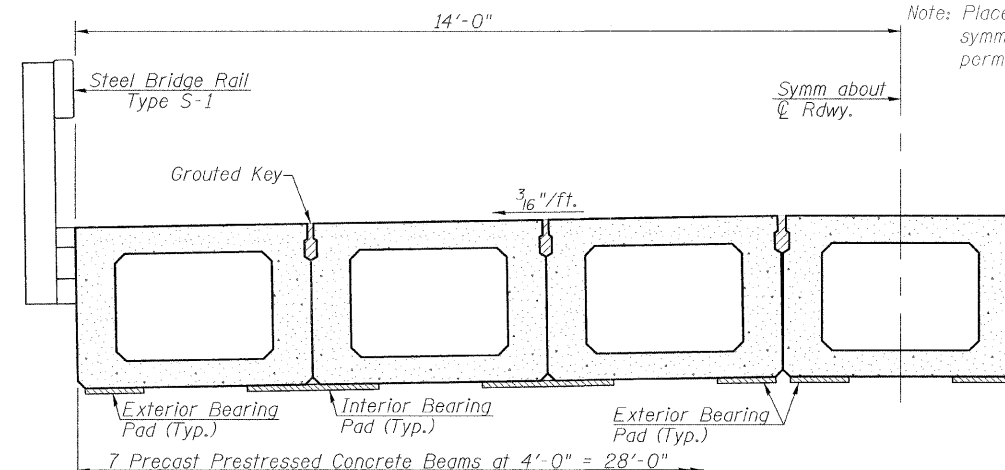
MINIMUM BAR LAP

#4 bar = 2'-0"  
#5 bar = 2'-6"



SECTION A-A

(Showing reinforcement and permissible strand locations)  
Note: Place the number of strands specified in each row symmetrically about the centerline of beam in the permissible strand locations shown.



HALF CROSS SECTION

BAR LIST ONE BEAM ONLY (For information only)

| Bar   | No. | Size | Length | Shape |
|-------|-----|------|--------|-------|
| A(E)  | 71  | #4   | 3'-7"  | —     |
| B(E)  | 10  | #5   | 39'-3" | —     |
| B1(E) | 12  | #4   | 26'-8" | —     |
| B2(E) | 4   | #5   | 15'-3" | —     |
| S(E)  | 106 | #4   | 8'-5"  | □     |
| S1(E) | 12  | #4   | 7'-3"  | □     |
| S2(E) | 94  | #4   | 7'-6"  | □     |
| U(E)  | 12  | #6   | 5'-0"  | □     |
| U1(E) | 6   | #4   | 6'-0"  | □     |

Note: See sheet 7 of 15 for additional details and Bill of Material.  
Bars indicated thus 5x2-#5 indicates 5 lines of bars with 2 lengths per line.

PD-3348-0

11-1-09

|             |                      |            |           |
|-------------|----------------------|------------|-----------|
| FILE NAME = | USER NAME = #USER#   | DESIGNED - | REVISED - |
| #FILE#      |                      | DRAWN -    | REVISED - |
|             | PLOT SCALE = #SCALE# | CHECKED -  | REVISED - |
|             | PLOT DATE = #DATE#   | DATE -     | REVISED - |



Allen Henderson & Associates, Inc.  
Civil and Structural Engineers Springfield, IL.  
62703 Phone: (217)544-8033 IL Design Firm  
No. 184-001907

SUPERSTRUCTURE

SCALE: SHEET NO. 6 OF 15 SHEETS STA. TO STA.

| T.R. RTE.                                     | SECTION        | COUNTY | TOTAL SHEETS | SHEET NO. |
|---|----------------|--------|--------------|-----------|
| 43  | 08-03115-00-BR | MENARD | 15           | 6         |
| CONTRACT NO. 93530                            |                |        |              |           |
| FED. ROAD DIST. NO. ILLINOIS FED. AID PROJECT |                |        |              |           |