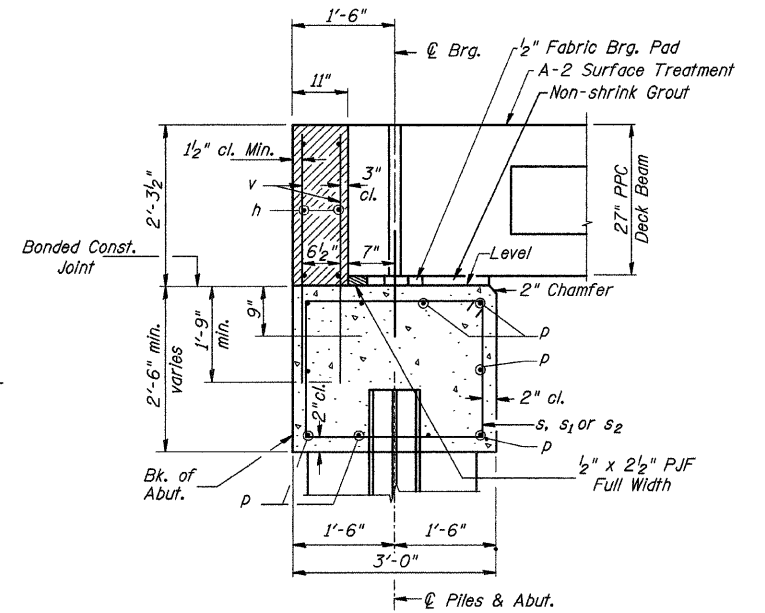
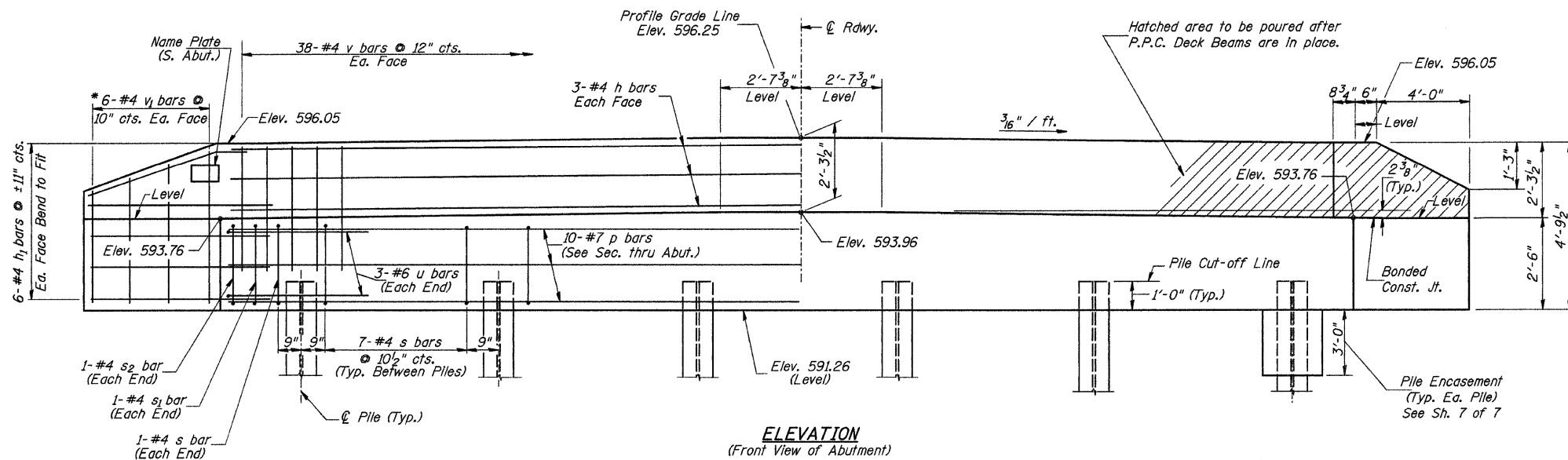


PLAN



SECTION THRU ABUT.
(At Right Angles)



ELEVATION
(Front View of Abutment)

TWO ABUTMENTS
BILL OF MATERIAL

BAR	NO.	SIZE	LENGTH	SHAPE
h	12	#4	37'-9"	—
h ₁	48	#4	6'-6"	—
p	20	#7	37'-9"	—
s	74	#4	10'-5"	□
s ₁	4	#4	7'-10"	□
s ₂	4	#4	9'-2"	□
u	12	#6	12'-5"	—
v	152	#4	4'-0"	—
v ₁	24	#4	7'-9"	—
Concrete Structures		CU YD	30.8	
① Reinforcement Bars		POUND	3,370	
Structure Excavation		CU YD	60	
Name Plates		EACH	1	
① Furnishing Steel Piles HP10x42		FOOT	190	
① Driving Piles		FOOT	190	
① Test Pile Steel HP10x42		EACH	2	
Concrete Encasement		CU YD	4.2	

① See Special Provisions

DESIGN STRESSES

$f'_c = 3,500$ p.s.i.
 $f_y = 60,000$ p.s.i.

PILE DATA

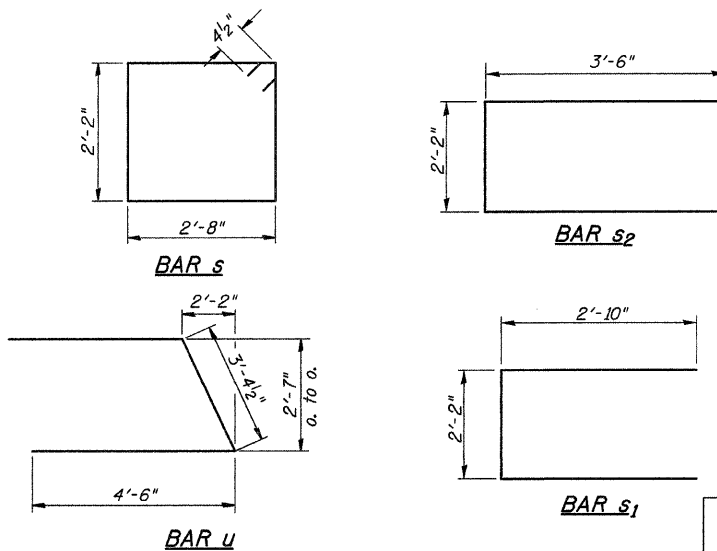
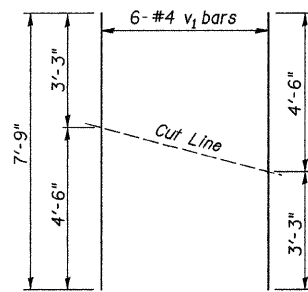
Type & Size: Steel HP10x42
Nominal Required Bearing: 335 kips
Factored Resistance Available: 167 kips
Est. Length: 19' Each Abutment
No. Req'd.: 12 (Includes 1 Test Pile at Each Abut.)

NOTES

- The Backwall and the portion of the Wingwalls above the bonded construction joint shall be cast against the in-place beam.
- Reinforcement bars shall conform to ASTM A706 Grade 60.

BAR CUTTING DIAGRAM

* Order v₁ bars full length. Cut as shown and use remainder of bars in opposite face.



SHEET NO. 6
7 SHEETS

ROUTE NO.	SECTION	COUNTY	TOTAL SHEETS	SHEET NO.
TR 148	07-05107-00-BR	PIKE	18	12
S.N. 075-3315		CONTRACT NO. 93532		
FED. ROAD DIST. NO. 7 ILLINOIS		FED. AID PROJECT BROS-01491040		

ABUTMENTS
PIKE COUNTY
SECTION 07-05107-00-BR
T.R. 148 OVER KISER CREEK TRIBUTARY