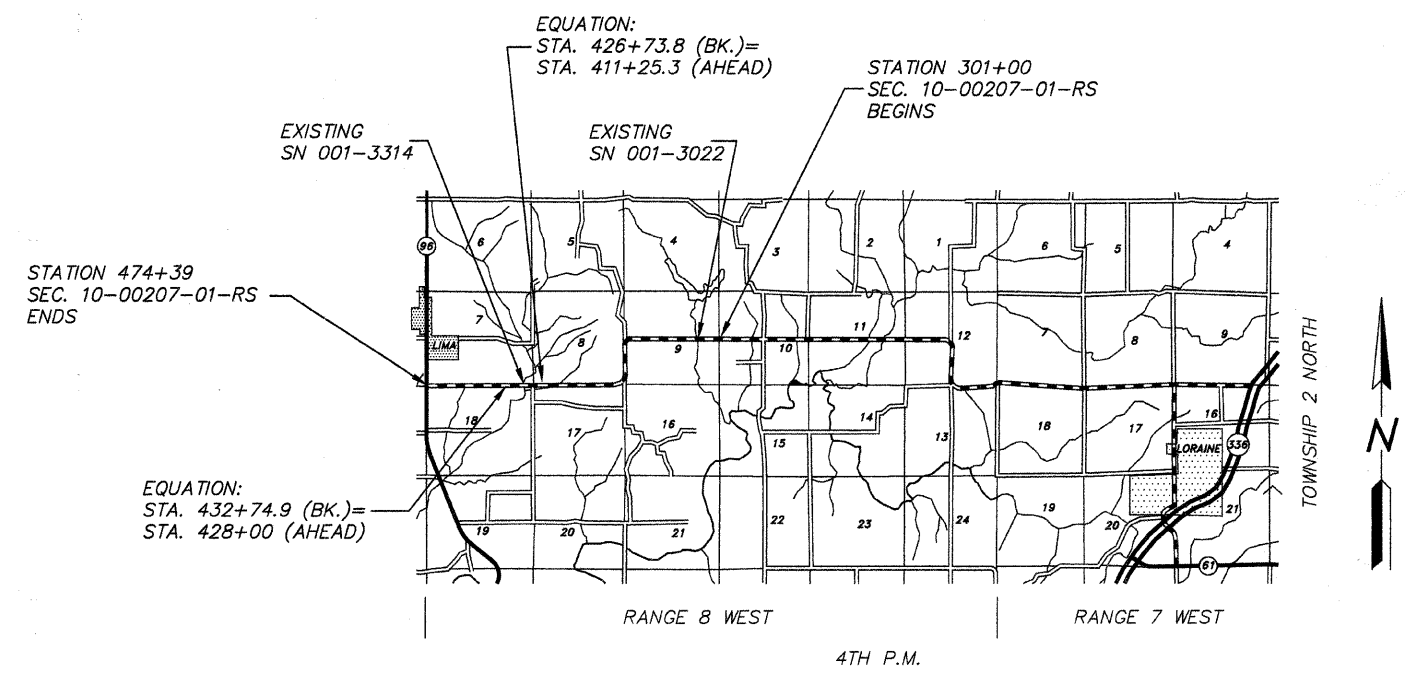
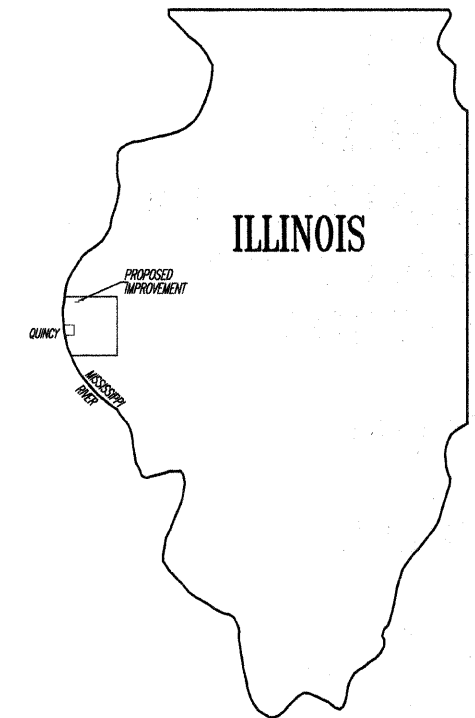


COUNTY	ROUTE	SECTION	TOTAL SHEETS	SHEET NO.
ADAMS	FAS 2592	10-00207-01-RS	12	1

INDEX OF SHEETS:

SHEET NO.	SHEET
1	TITLE SHEET
2	SUMMARY OF QUANTITIES
	GENERAL NOTES
3	TYPICAL CROSS SECTIONS
4-11	PLAN SHEETS
12	SIDE ROAD & ENTRANCE DETAILS
	BUTT JOINT DETAIL
STANDARD	701001-02
STANDARD	701006-03
STANDARD	701301-03
STANDARD	701306-02
STANDARD	701901-01
STANDARD	BLR 24-2

STATE OF ILLINOIS
DEPARTMENT OF TRANSPORTATION
DIVISION OF HIGHWAYS
PLANS FOR PROPOSED
SURFACE TRANSPORTATION/RURAL PROGRAM
LOCAL AGENCY PAVEMENT PRESERVATION
FAS 2592 (CH 1) SECTION 10-00207-01-RS ADAMS COUNTY
PROJECT NO. RS-2592(103) JOB NO. C-96-257-10



LOCATION MAP

FUNCTIONAL CLASS: MAJOR COLLECTOR (NON-URBAN)
ADT=375

PROPOSED IMPROVEMENT CONSISTS OF PLACING 1 1/2" POLYMERIZED HOT-MIX ASPHALT SURFACE COURSE, MIX "C", N50 OVER 3/4" OF LEVELING BINDER (MACHINE METHOD) N50 ON THE EXISTING 22' ROADWAY WITH OTHER MISCELLANEOUS CONSTRUCTION

UTILITIES:
J.U.L.I.E. _____ 1-800-892-0123
ADAMS TELEPHONE _____ GOLDEN, IL
ADAMS RURAL ELECTRICAL CO-OP _____ CAMP POINT, IL
ABS WATER DISTRICT _____ GOLDEN, IL

GROSS LENGTH:
STA. 301+00.00 TO STA. 426+73.80 = 12,573.80 FT.
STA. 411+25.30 TO STA. 432+74.90 = 2,149.60 FT.
STA. 428+00.00 TO STA. 474+39.00 = 4,639.00 FT.
19,362.40 FT.

BRIDGE OMISSIONS:
STA. 313+73.75 TO STA. 314+26.25 = 52.50 FT.
STA. 417+93.06 TO STA. 418+74.94 = 81.88 FT.
134.38 FT.

NET LENGTH TO BE IMPROVED: 19,228.02 FT. = 3.642 MILES

PROPOSED IMPROVEMENT MARKED THUS —

THESE PLANS WERE PREPARED BY ME OR BY A FULL-TIME MEMBER OF MY STAFF WORKING UNDER MY PERSONAL SUPERVISION.

SUBMITTED BY Ricki A. Long DATE 3-24-10
COUNTY ENGINEER
LICENSE NO. 062-032961
LIC. EXPIRES 11/30/2011

APPROVED Terrence H. Fountain 24 2010
Ricki A. Long COUNTY ENGINEER

PASSED March 16 2010
Ken Duchambeau DISTRICT ENGINEER OF CONSTRUCTION

PASSED March 16 2010
Terrence H. Fountain DISTRICT ENGINEER OF LOCAL ROADS AND STREETS

RELEASING FOR BID BASED ON LIMITED REVIEW March 16 2010
Roger L. Driskell DEPUTY DIRECTOR OF HIGHWAYS REGION FOUR ENGINEER

**STATE OF ILLINOIS
DEPARTMENT OF TRANSPORTATION**