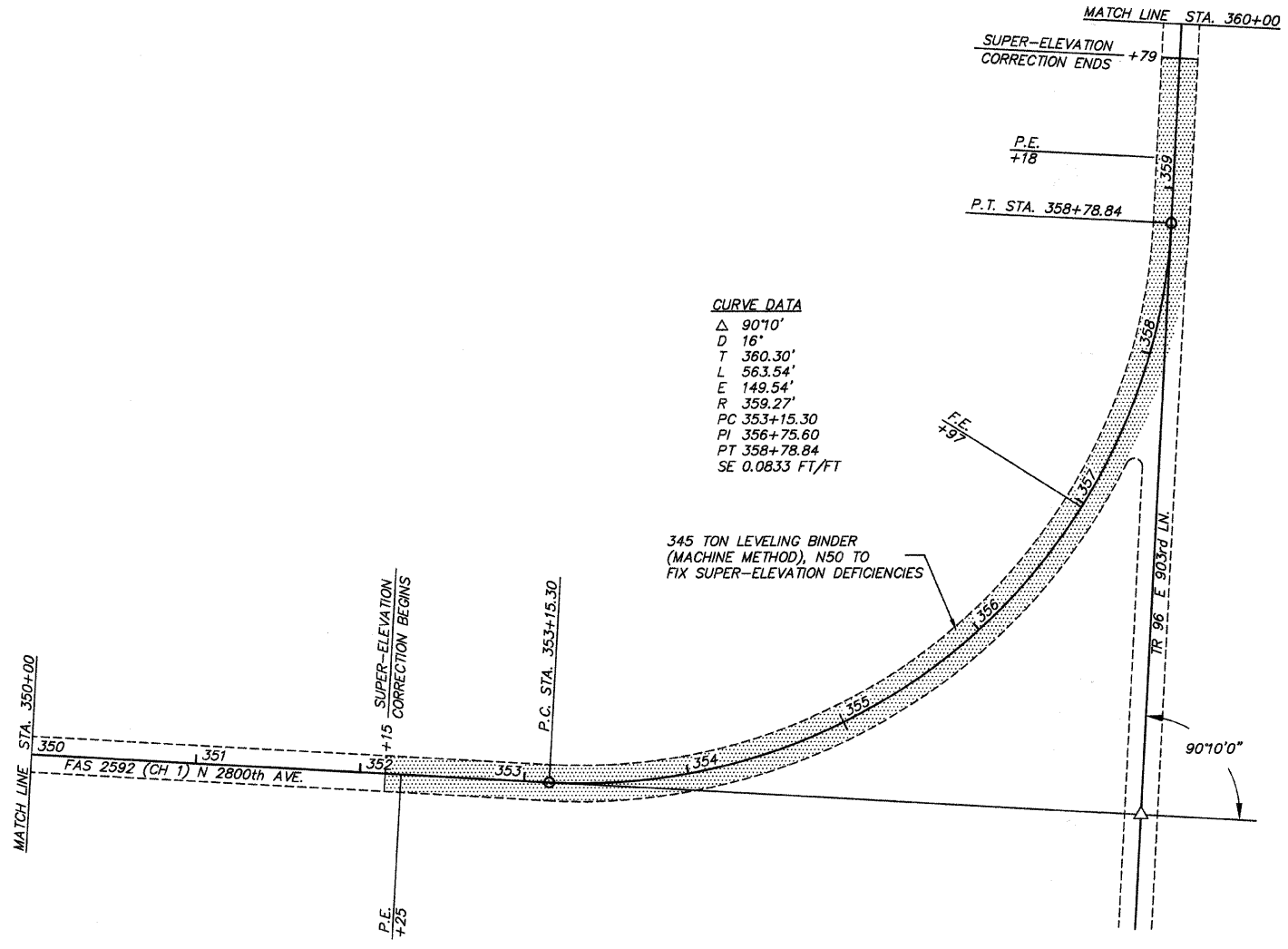
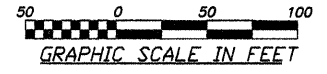


COUNTY	ROUTE	SECTION	TOTAL SHEETS	SHEET NO.
ADAMS	FAS 2592	10-00207-01-RS	12	6

STATION 350+00 TO STATION 375+00
PROJECT NO. RS-2592(103)



CURVE DATA
 Δ 90°10'
 D 16'
 T 360.30'
 L 563.54'
 E 149.54'
 R 359.27'
 PC 353+15.30
 PI 356+75.60
 PT 358+78.84
 SE 0.0833 FT/FT

