

STATE OF ILLINOIS
DEPARTMENT OF TRANSPORTATION

PLANS FOR PROPOSED
SURFACE TRANSPORTATION/RURAL PROGRAM (W/TARP)

MORGAN COUNTY
SECTION 05-00093-03-FP

PROJECT NO. RS-0611(109)
CH 19 (FAS 611)/LITERBERRY-PRENTICE RD
JOB NO. C-96-211-08

F.A.S. RTE.	SECTION	COUNTY	TOTAL SHEETS	SHEET NO.
611	05-00093-03-FP	MORGAN	31	1

CONTRACT NO. 93535

REQUIRED STANDARDS

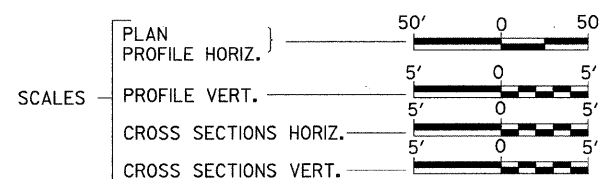
- 000001-05 STANDARD SYMBOLS, ABBREVIATIONS, AND PATTERNS
- 280001-05 TEMPORARY EROSION CONTROL SYSTEMS
- 701001-02 OFF-RD OPERATIONS, 2L, 2W, MORE THAN 15' AWAY
- 701006-03 OFF-RD OPERATIONS, 2L, 2W, 15' TO 24" FROM PAVEMENT EDGE
- 701011-02 OFF-RD MOVING OPERATIONS, 2L, 2W DAY ONLY
- 701201-03 LANE CLOSURE, 2L, 2W, DAY ONLY, FOR SPEEDS \geq 45 MPH
- 701301-03 LANE CLOSURE, 2L, 2W, SHORT TIME OPERATIONS
- 701306-02 LANE CLOSURE, 2L, 2W SLOW MOVING OPERATIONS - DAY ONLY FOR SPEEDS \geq 45 MPH
- 701311-03 LANE CLOSURE, 2L, 2W MOVING OPERATIONS DAY ONLY
- 701326-03 LANE CLOSURE, 2L, 2W, PAVEMENT WIDENING, FOR SPEEDS \geq 45 MPH
- 701901-01 TRAFFIC CONTROL DEVICES
- 780001-02 TYPICAL PAVEMENT MARKINGS
- BLR 21-8 TYPICAL APPLICATION OF TRAFFIC CONTROL DEVICES FOR CONSTRUCTION ON RURAL LOCAL HIGHWAYS
- BLR 22-6 TYP. APPLIC. TCD (ROAD CLOSED TO THRU TRAFFIC)
- BLR 24-2 MAILBOX TURNOUT FOR LOCAL ROADS

INDEX OF SHEETS

- 1 COVER SHEET
- 2 GENERAL NOTES, LEGEND
- 3 SUMMARY OF QUANTITIES
- 4 TYPICAL SECTIONS
- 5-6 SCHEDULE OF QUANTITIES
- 7-11 PLAN & PROFILE SHEETS
- 12-13 EROSION CONTROL PLAN & PROFILE SHEETS
- 14-15 SPECIAL DETAILS
- 16-31 CROSS SECTION SHEETS

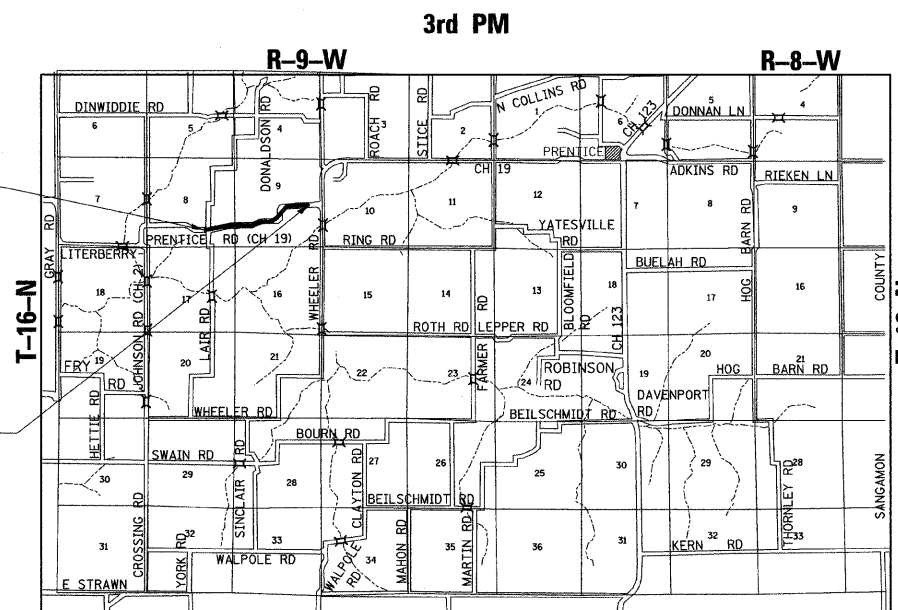
DESCRIPTION OF WORK

THIS PROJECT CONSISTS OF RESURFACING, REALIGNMENT AND RECONSTRUCTION OF LITERBERRY-PRENTICE ROAD (CH 19). THE PROPOSED SURFACE CONSISTS OF 1 1/2" HOT-MIX ASPHALT SURFACE COURSE OVER A 2 1/2" HOT-MIX ASPHALT BINDER COURSE. WITHIN THE LIMITS OF THE RECONSTRUCTED AREAS, SEVERAL PIPE CULVERT LOCATIONS ARE TO BE REMOVED AND REPLACED. ALSO INCLUDED ARE AGGREGATE SHOULDERS, AGGREGATE BASE COURSE, EARTH EXCAVATION, FURNISHED EXCAVATION, PAVEMENT MARKING, AND OTHER ASSOCIATED WORK.



SEC 05-00093-03-FP
BEGINS
STATION 215+98.97

SEC 05-00093-03-FP
ENDS
STATION 284+06.84



LOCATION MAP



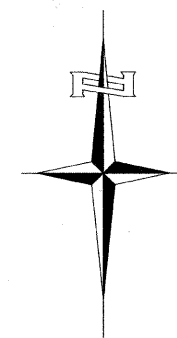
TOTAL LENGTH OF PROJECT = 6,807.87 LINEAL FEET = 1.289 MILES
NET LENGTH OF PROJECT = 6,807.87 LINEAL FEET = 1.289 MILES

DESIGN DESIGNATION
FAS 611
RURAL COLLECTOR
% PV = 88
% SU = 7
% MU = 5

ADT (2025): 550
DESIGN SPEED: 50 MPH
3R GUIDELINES

TELEPHONE WATER & SEWER GAS & ELECTRIC
VERIZON NORTH MORGAN WATER COOP MENARD ELECTRIC COOP
300 W BEECHER 7 QUAIL LANE 122 SOUTH 6TH STREET
JACKSONVILLE, ILLINOIS JACKSONVILLE, ILLINOIS PETERSBURG, ILLINOIS
309-454-1470 217-245-1104 217-632-1104

FOR UTILITY LOCATION INFORMATION FOR EXCAVATION
CALL J.U.L.I.E. BEFORE YOU DIG
1-800-892-0123 OR 811



RR 2/3/10
Exp 11/30/11

APPROVED	<i>Murphy</i>	3	2010
	<i>Ch. Hines</i>		MORGAN COUNTY ENGINEER
PASSED	<i>March 18</i>		2010
	<i>Terrence H. Fountain</i>	MAA	DISTRICT ENGINEER OF LOCAL ROADS & STREETS
PASSED	<i>March 17</i>		2010
	<i>Ron Achenbach</i>		DISTRICT CONSTRUCTION ENGINEER
RELEASED FOR BID BASED ON LIMITED REVIEW	<i>March 18</i>		2010
	<i>Roger L. Driskell</i>	MAA	DEPUTY DIRECTOR OF HIGHWAYS, REGION FOUR ENGINEER STATE OF ILLINOIS DEPARTMENT OF TRANSPORTATION

Hutchison Engineering, Inc.
JACKSONVILLE ILLINOIS
2010 JOB#2839

CONTRACT NO. 93535