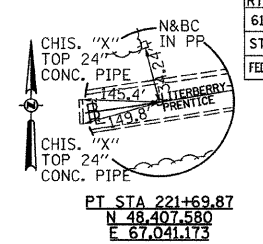
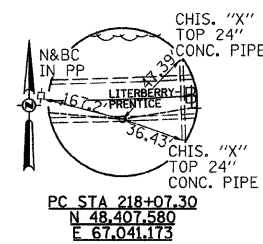
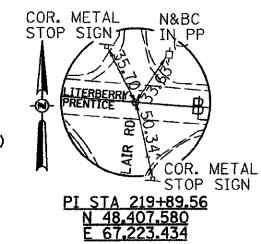
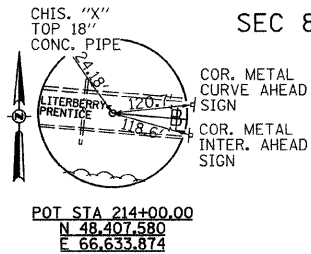


F.A.S. RTE.	SECTION	COUNTY	TOTAL SHEETS	SHEET NO.
611	05-00093-03-FP	MORGAN	31	7
STA. 210+00		TO STA. 225+00		
FED. ROAD DIST. NO. 6 ILLINOIS FED. AID PROJECT				

SEC 8, T 16 N, R 9 W, 3RD PM

SE 1/4, SEC 8



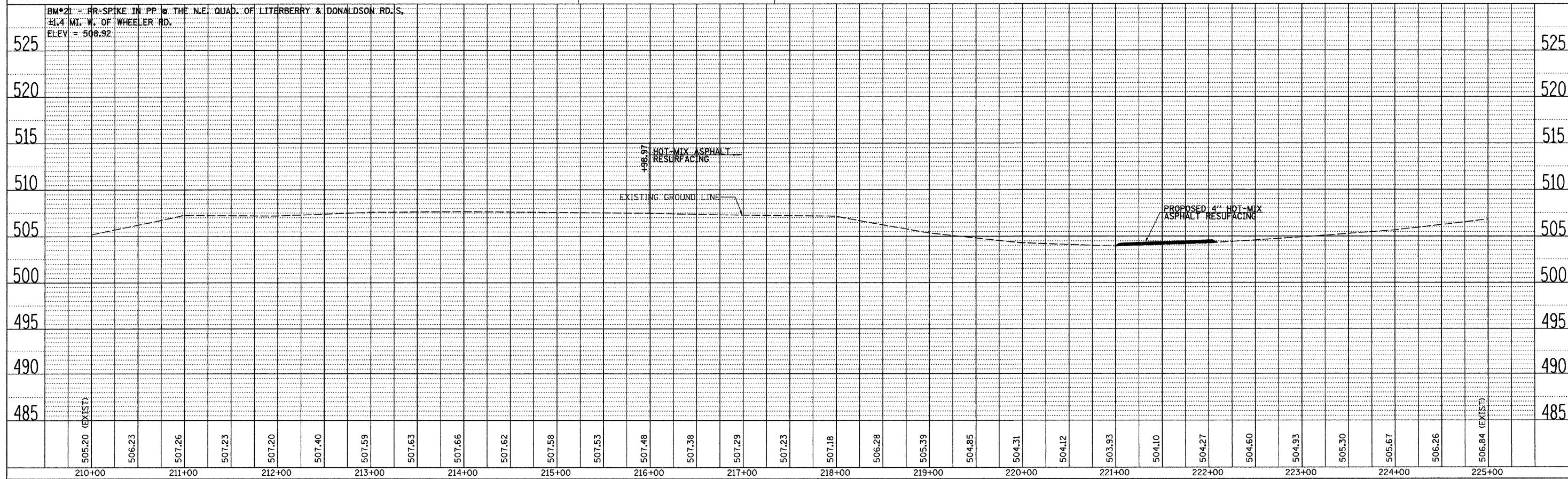
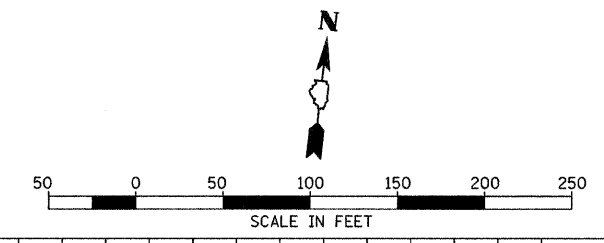
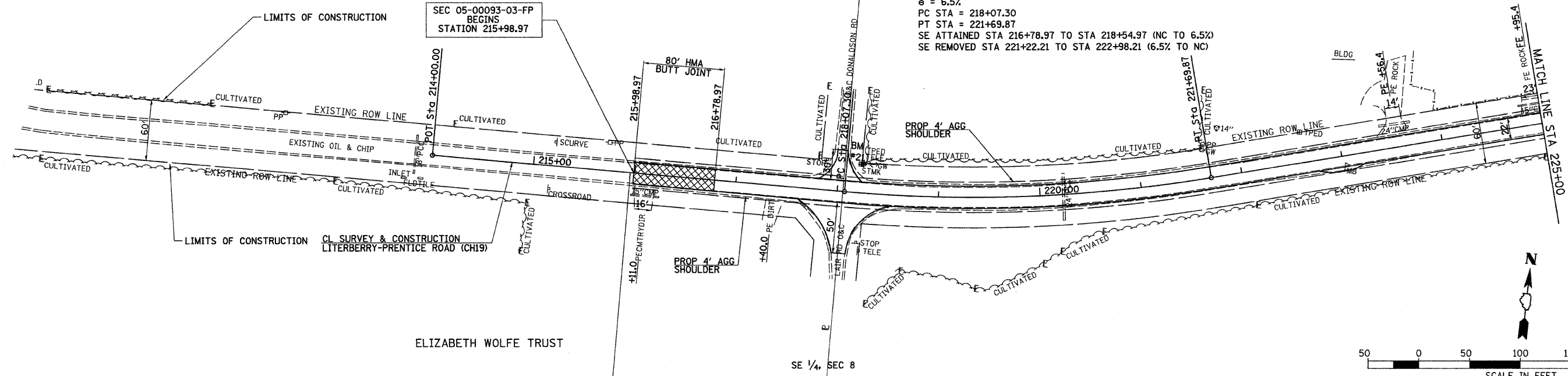
PROP CURVE CH19-8
PI STA = 219+89.56
 $\Delta = 14^\circ 30' 00''$ (LT)
D = 3' 59' 57"
R = 1,432.69'
T = 182.26'
L = 362.57'
E = 11.55'
e = 6.5%
PC STA = 218+07.30
PT STA = 221+69.87
SE ATTAINED STA 216+78.97 TO STA 218+54.97 (NC TO 6.5%)
SE REMOVED STA 221+22.21 TO STA 222+98.21 (6.5% TO NC)

DATE	BY

PLAN
REVISIONS
DATE
BY
NOTE BOOK NO.
DRAWING NO.
FILE NAME

DATE	BY

PROFILE
REVISIONS
DATE
BY
NOTE BOOK NO.
DRAWING NO.
STRUCTURE NOTATION



LITERBERRY-PRENTICE ROAD (CH 19), PLAN AND PROFILES, STA 210+00 TO STA 225+00