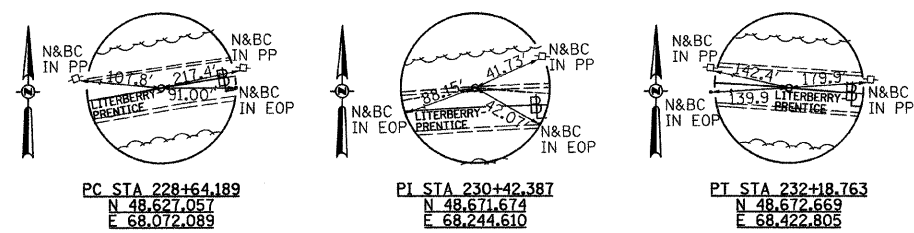
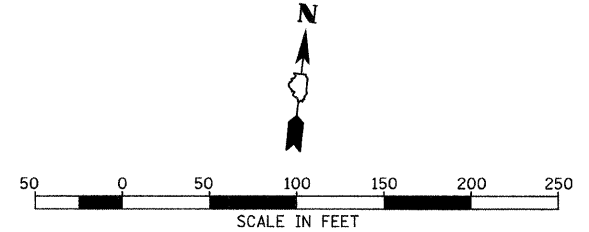
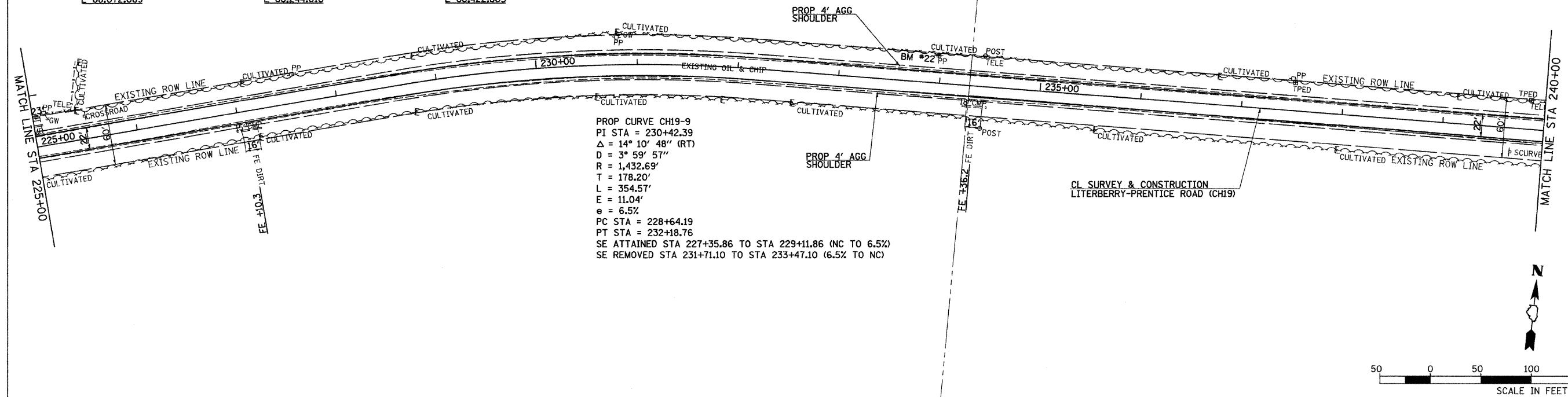


F.A.S. RTE.	SECTION	COUNTY	TOTAL SHEETS	SHEET NO.
611	05-00093-03-FP	MORGAN	31	8
STA. 225+00		TO STA. 240+00		
FED. ROAD DIST. NO. 6 ILLINOIS FED. AID PROJECT				



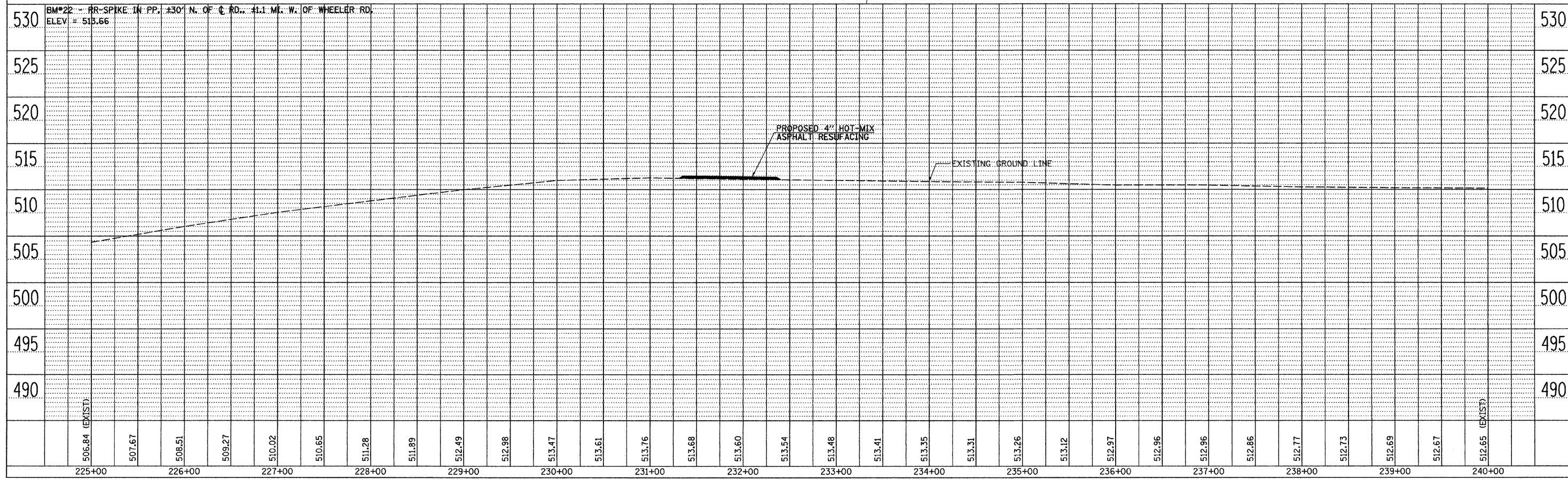
DATE	BY

PLAN  
 REVISIONS  
 PLOTTED  
 CHECKED  
 DATE  
 FILE NAME  
 NO.



DATE	BY

PROFILE  
 REVISIONS  
 PLOTTED  
 CHECKED  
 DATE  
 FILE NAME  
 NO.



LITERBERRY-PRENTICE ROAD (CH 19), PLAN AND PROFILES, STA 225+00 TO STA 240+00